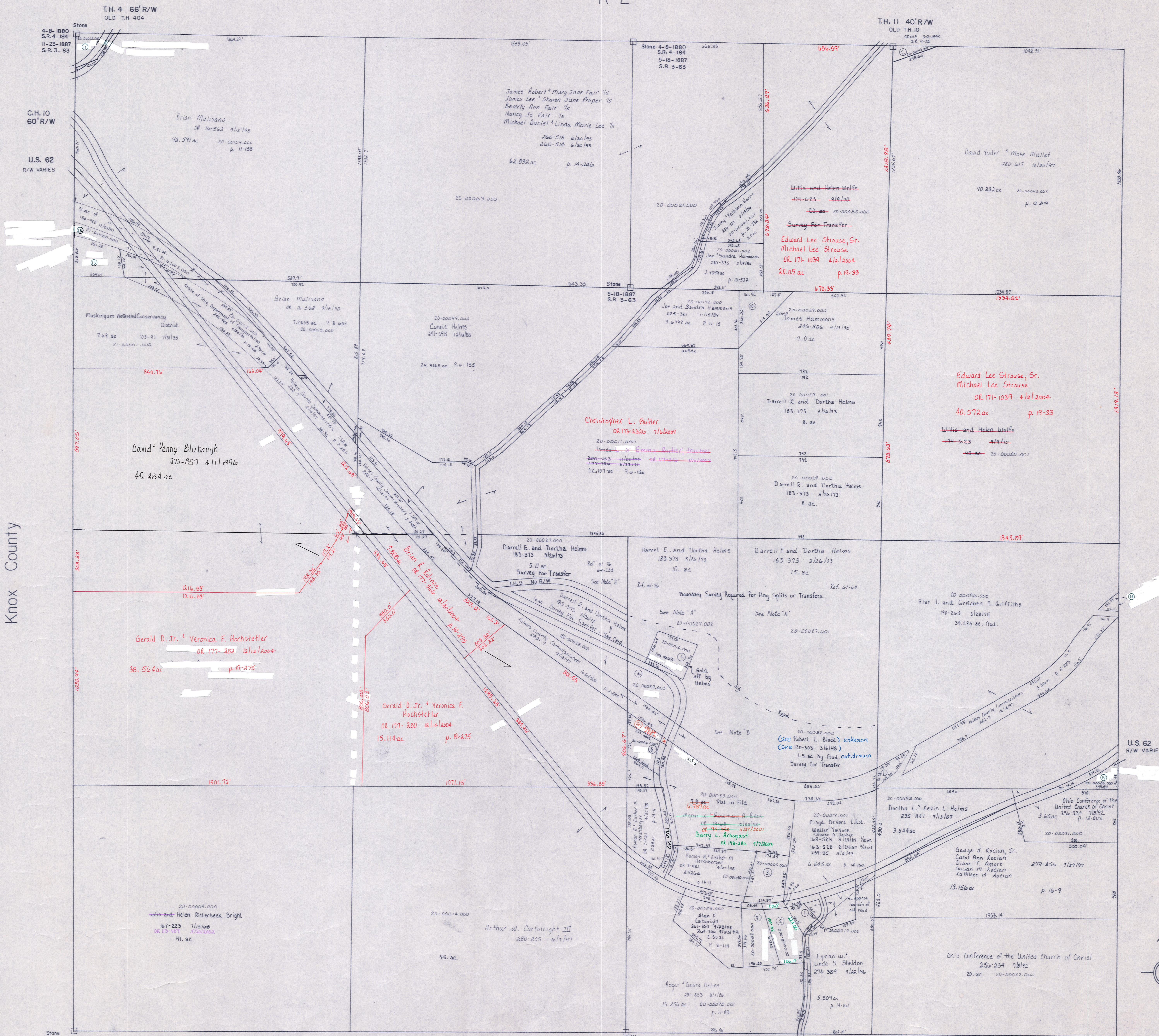


Section 16
R-2



Knox County

Section 24
R-6

Coshocton County

NOTE "A"
THE PROPERTIES OWNED BY DARRELL HELMS AND ROBERT BLACK HAVE VERY POOR DESCRIPTIONS. IT IS POSSIBLE THAT HELMS IS OCCUPYING LANDS WHICH ARE DESCRIBED ON BLACK'S DEED. BY RESEARCHING THESE PARCELS IT WAS FOUND THAT THE ORIGINAL DEED DESCRIPTIONS LOCATED THESE TRACTS NORTH OF THE ROAD. FOR MORE INFORMATION, SEE PROPERTY CARD.

NOTE "B"
IT CAN NOT BE DETERMINED EXACTLY WHAT BLACK HAS LEFT, HOWEVER, RESEARCH INDICATES THERE IS MORE THAN 15 AC AS SHOWN ON THE TAX DUPLICATE. FOR MORE INFORMATION, SEE PROPERTY CARD.

T-8, R-9, Sec. 25
RICHLAND TWP.
SCALE 1" = 200'

LET IT BE KNOWN, THIS MAP HAS BEEN PREPARED AS A REFERENCE GUIDE TO PROPERTY OWNERSHIP. WE BELIEVE THIS INFORMATION TO BE CORRECT AND CURRENT, HOWEVER, IT IS NOT INTENDED FOR ANY LEGAL USE, WHETHER IT BE IN SALES, TRANSFERS, TRADES, LEASES OF ANY TYPE, ETC., AND DO NOT ACCEPT RESPONSIBILITY FOR ERRORS OF ANY NATURE OR OMISSIONS CONTAINED HEREIN.



R-1