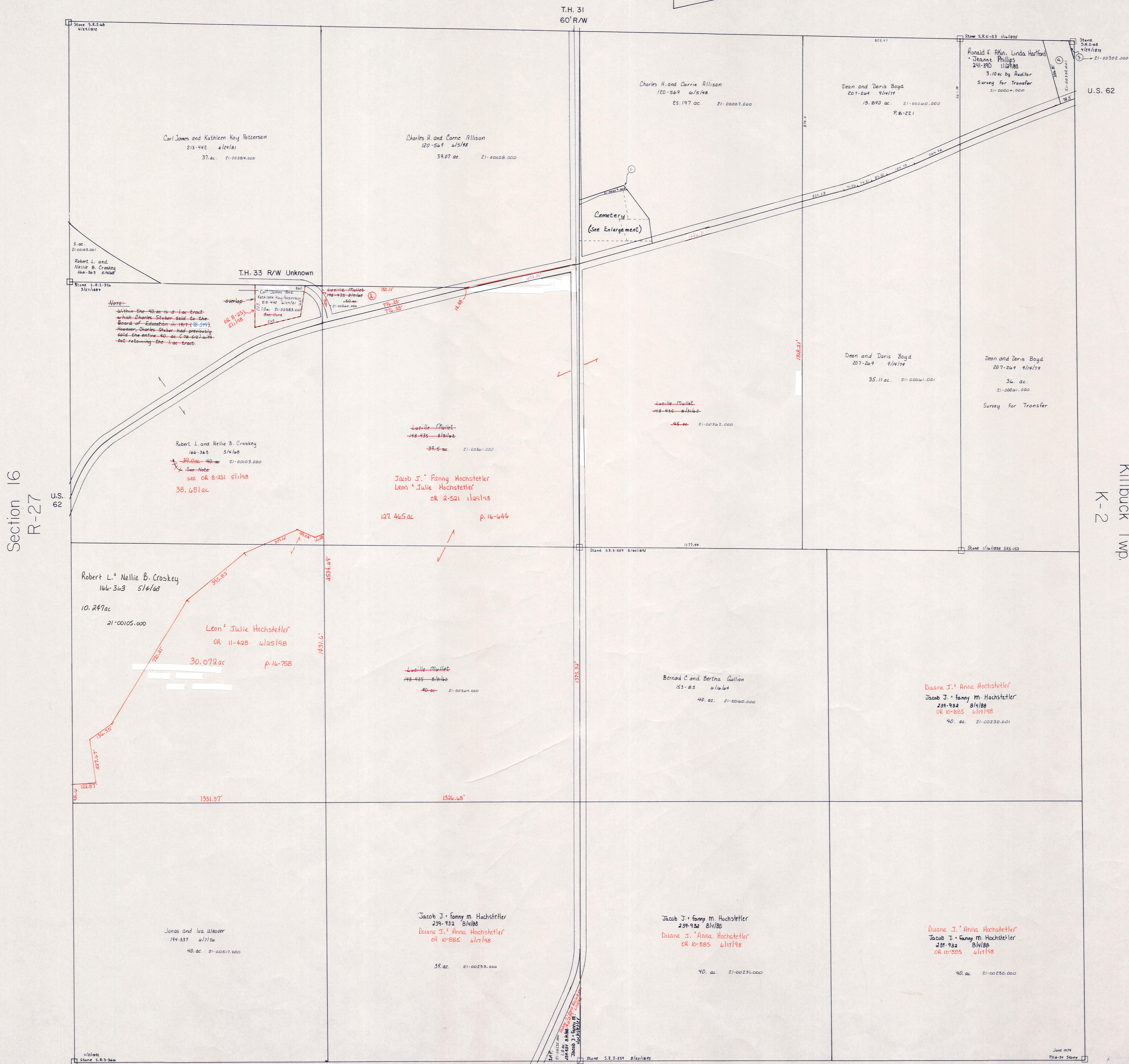
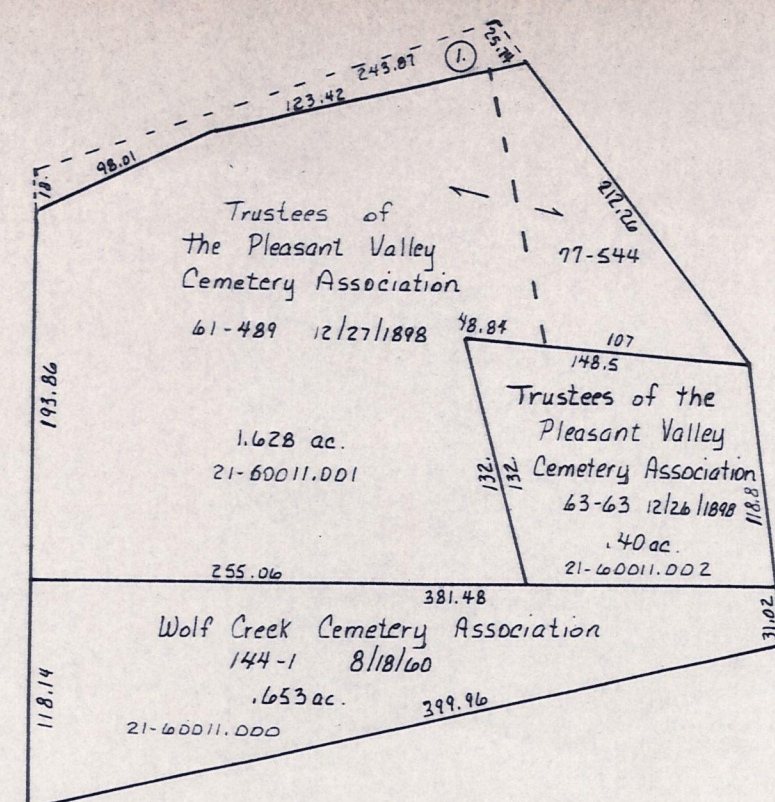


Section 14
R-33



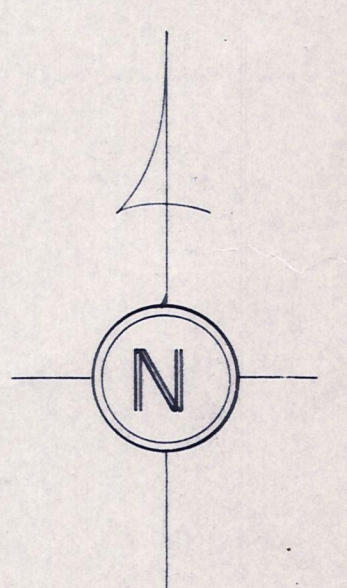
- ① 122 ac. Charles H. and Carrie L. Allison 194-3 8/18/88
- ② 122 ac. Lucille Millet, Jacob J. and Fanny Hochstetler 194-3 8/18/88
- ③ Raymond L. Teresa Lint 177-135 6/17/71 .029 ac p. 5-B4
- ④ Raymond D. Lint 256-348 4/16/87 .871 ac p. 10-B1A

T.H. 31
60' R/W
Section 24
R-31

T-8, R-8, Sec. 17
RICHLAND TWP.
SCALE 1" = 200'

R-332

Killbuck Twp.
K-2



LET IT BE KNOWN, THIS MAP HAS BEEN PREPARED AS A REFERENCE GUIDE TO PROPERTY OWNERSHIP. WE BELIEVE THIS INFORMATION TO BE CORRECT AND CURRENT. HOWEVER, IT IS NOT INTENDED FOR ANY LEGAL USE, WHETHER IT BE IN SALES, TRANSFERS, TRADES, LEASES OF ANY TYPE, ETC., AND DO NOT ACCEPT RESPONSIBILITY FOR ERRORS OF ANY NATURE OR OMISSIONS CONTAINED HEREIN.