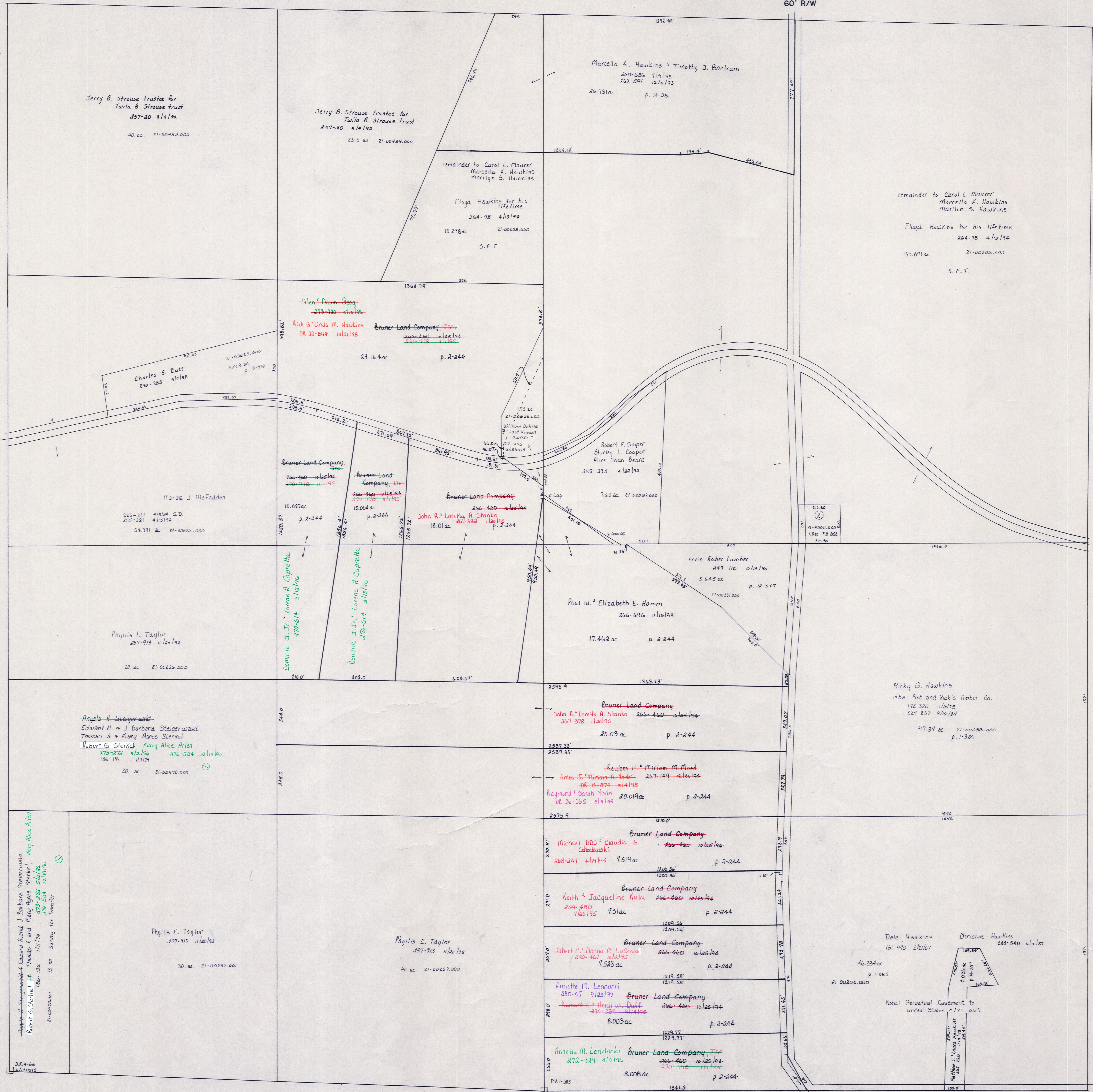


R-12
Section 18

C.H. 25
60' R/W



R-6
Section 24

R-16
Section 22

U.S. 62
R/W - See Road Plans

T.H. 26 60'R/W
OLD T.H. 298

- 1. 21-00046.000
- 2. 21-90011.000 1.0 ac P.B. 852
Holmes-Wayne Electric Cooperative, Inc.
215-838 4382

Coshocton County

T-8, R-9, Sec. 23
RICHLAND TWP.
SCALE 1"=200'

LET IT BE KNOWN, THIS MAP HAS BEEN PREPARED AS A REFERENCE GUIDE TO PROPERTY OWNERSHIP. WE BELIEVE THIS INFORMATION TO BE CORRECT AND CURRENT. HOWEVER, IT IS NOT INTENDED FOR ANY LEGAL USE, WHETHER IT BE IN SALES, TRANSFERS, TRADES, LEASES OF ANY TYPE, ETC., AND DO NOT ACCEPT RESPONSIBILITY FOR ERRORS OF ANY NATURE OR OMISSIONS CONTAINED HEREIN.

R-11