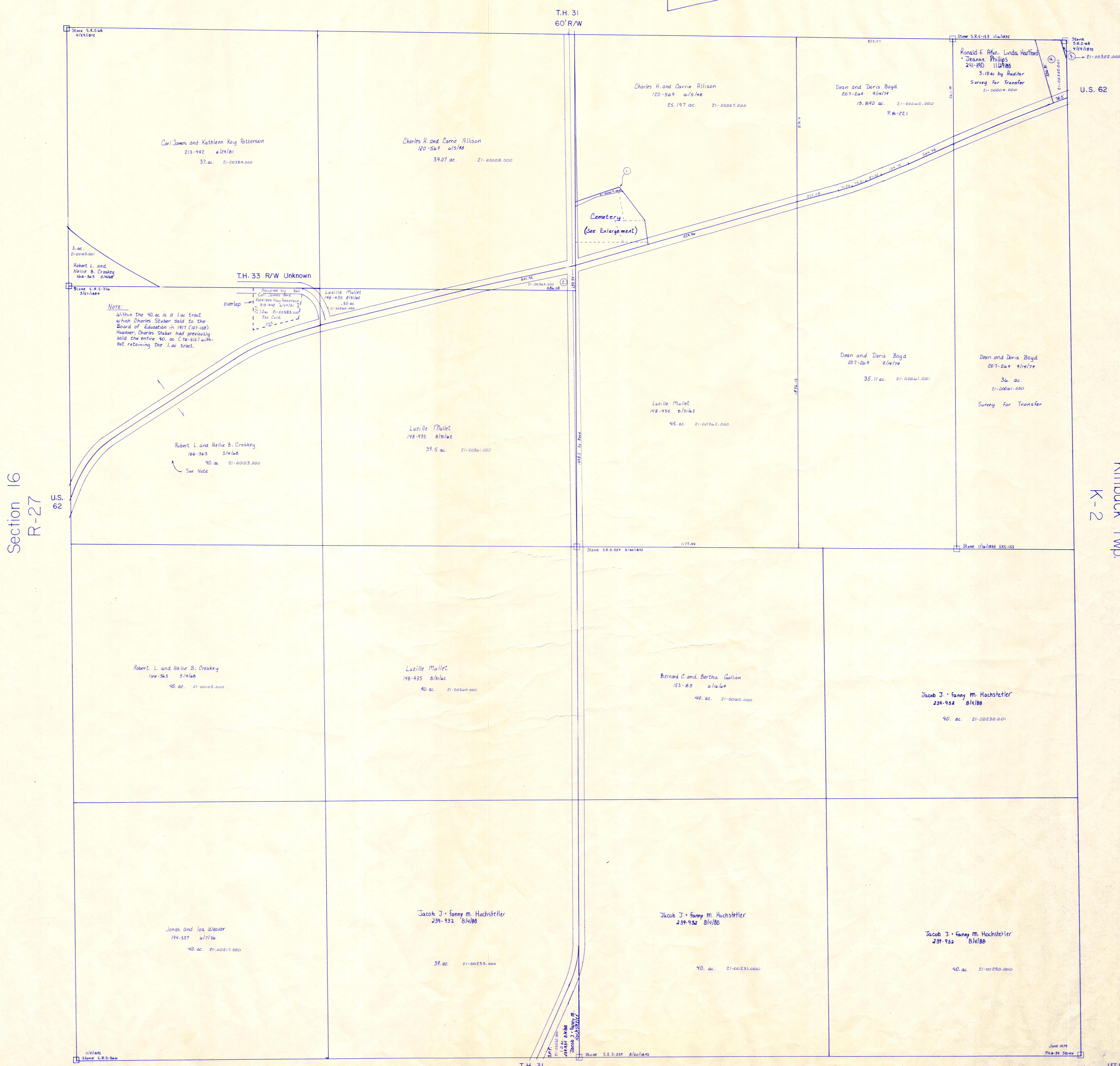
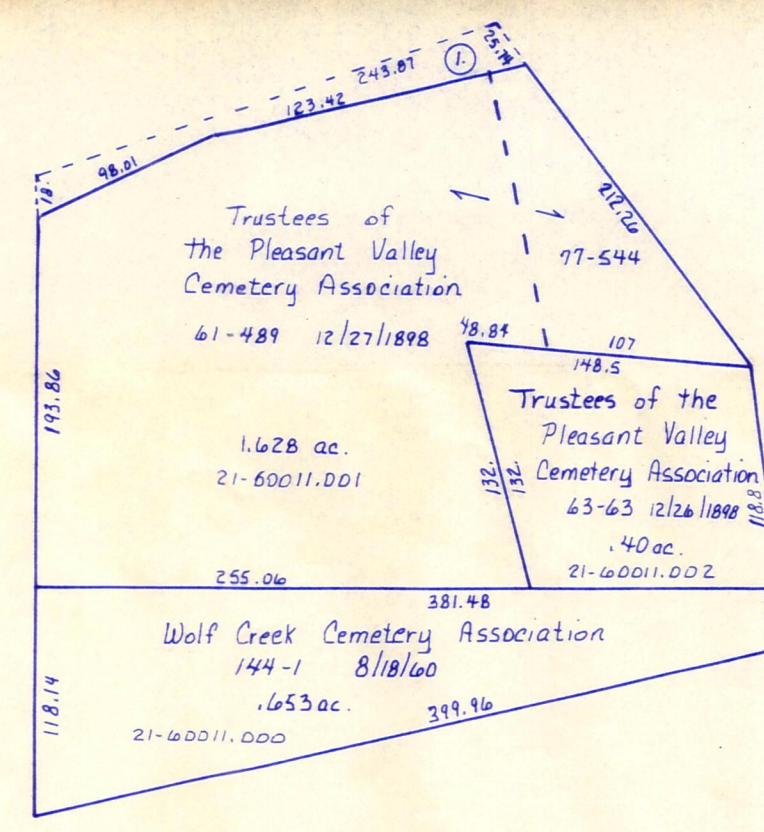


Section 14
R-33



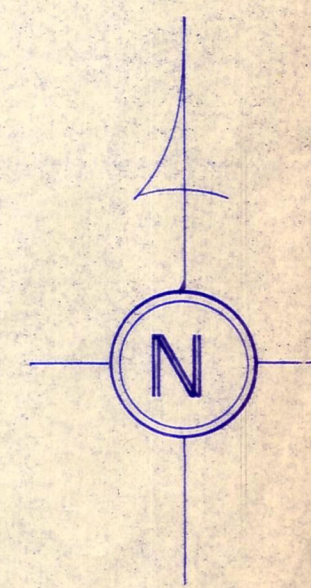
NOTE:
Within the 40 ac. is a 1 ac. tract which Charles Stuber sold to the Board of Education in 1917 (107-228). However, Charles Stuber had previously sold the entire 40 ac. (28-523) without retaining the 1 ac. tract.

- ① .122 ac. Charles H. and Carrie L. Allison 144-3 8/18/68
- ② .93 ac. Luville Mullet 148-435 8/31/62
- ③ Raymond L. Teresa Lint 177-195 1/17/71 .029 ac. p.5-84
- ④ Raymond D. Lint 236-348 4/1/67 .871 ac. p.10-81A

Section 24
R-31

T-8, R-8, Sec. 17
RICHLAND TWP.
SCALE 1" = 200'

Killbuck Twp.
K-2



R-33

LET IT BE KNOWN, THIS MAP HAS BEEN PREPARED AS A REFERENCE GUIDE TO PROPERTY OWNERSHIP. WE BELIEVE THIS INFORMATION TO BE CORRECT AND CURRENT, HOWEVER, IT IS NOT INTENDED FOR ANY LEGAL USE, WHETHER IT BE IN SALES, TRANSFERS, TRADES, LEASES OF ANY TYPE, ETC., AND DO NOT ACCEPT RESPONSIBILITY FOR ERRORS OF ANY NATURE OR OMISSIONS CONTAINED HEREIN.