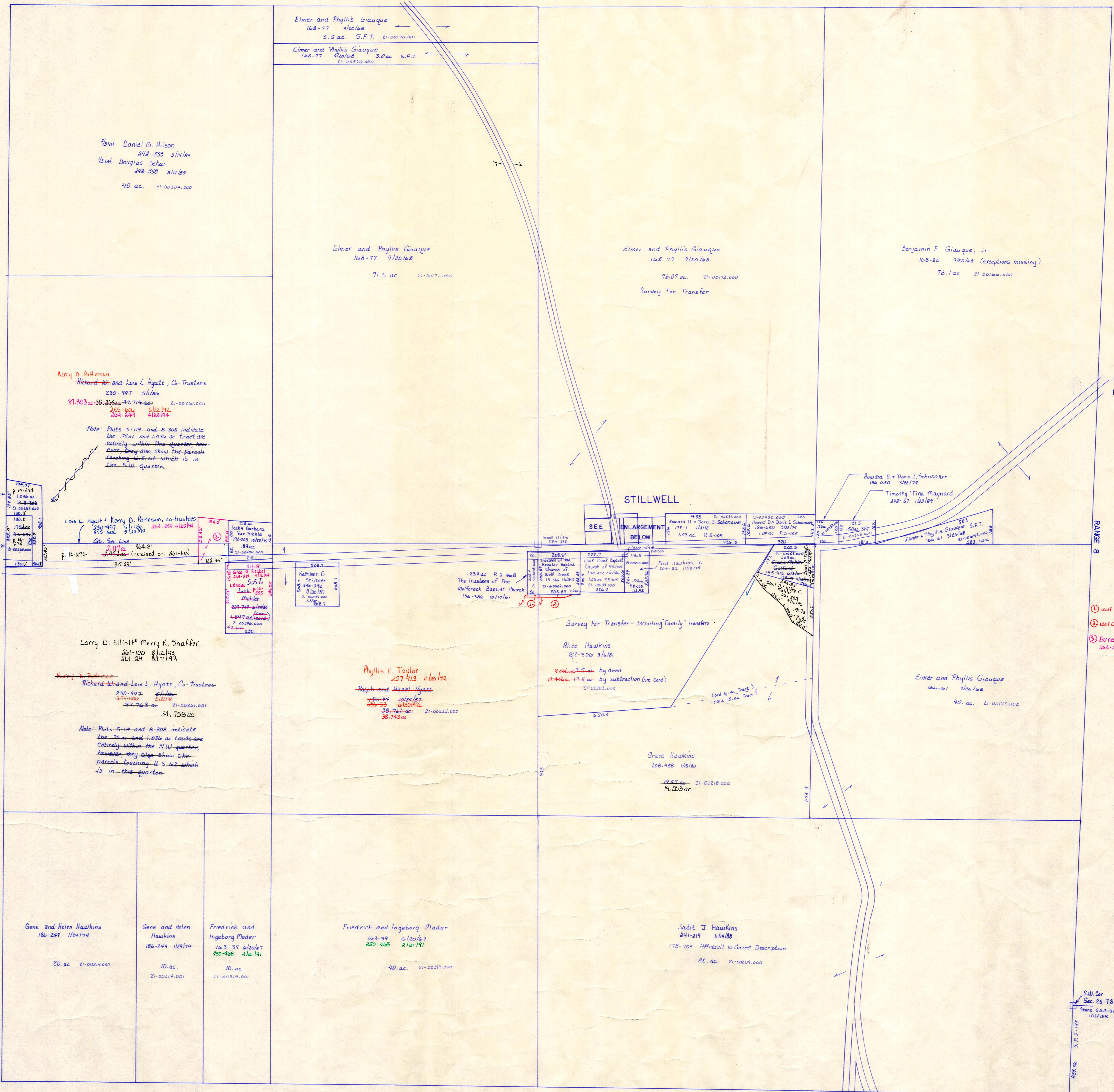


Section 20

R-22

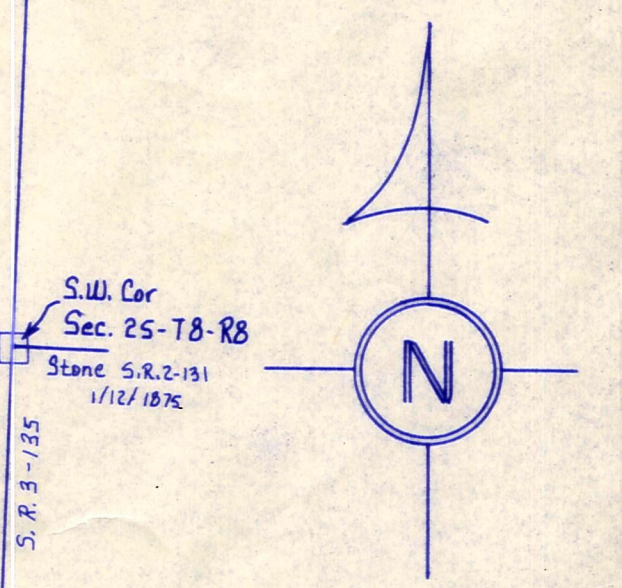
T.H. 24 40'R/W  
OLD TH. 299



Section 22  
R-16

Section 25  
R-26

- 1 Wolf Creek Baptist Church 246-115 2/16/60 .018 ac p. 12-300
- 2 Wolf Creek Baptist Church 246-121 2/16/60 .054 ac p. 12-300
- 3 Earnest L. + Mildred A. Mullett .717 ac. p. 11-419 204-252 4/18/84 204-402 5/1/84



Coshocton County

STILLWELL  
SCALE 1"=100'

Doris E. Eltringham (Phillips)	
1	Doris E. Eltringham (Phillips) 128-79 10/29/67 187-555 5/17/70
2	Doris E. Eltringham (Phillips) 128-79 10/29/67 187-555 5/17/70
3	Doris E. Eltringham (Phillips) 128-79 10/29/67 187-555 5/17/70
4	Doris E. Eltringham (Phillips) 128-79 10/29/67 187-555 5/17/70

Note: The measure made by Stillwell was commenced too far North by 6 ft at the east end, hence the lots are a little longer as the North line was marked and buildings placed to it and is no to remain. The See line being indefinite at that time. See S.R. 4 pg. 395

C.H. 270  
R/W-Unknown

T-8, R-9, Sec. 21  
RICHLAND TWP  
SCALE 1"=200'

LET IT BE KNOWN, THIS MAP HAS BEEN PREPARED AS A REFERENCE GUIDE TO PROPERTY OWNERSHIP. WE BELIEVE THIS INFORMATION TO BE CORRECT AND CURRENT. HOWEVER, IT IS NOT INTENDED FOR ANY LEGAL USE, WHETHER IT BE IN SALES, TRANSFERS, TRADES, LEASES OF ANY TYPE, ETC., AND DO NOT ACCEPT RESPONSIBILITY FOR ERRORS OF ANY NATURE OR OMISSIONS CONTAINED HEREIN.

R-21