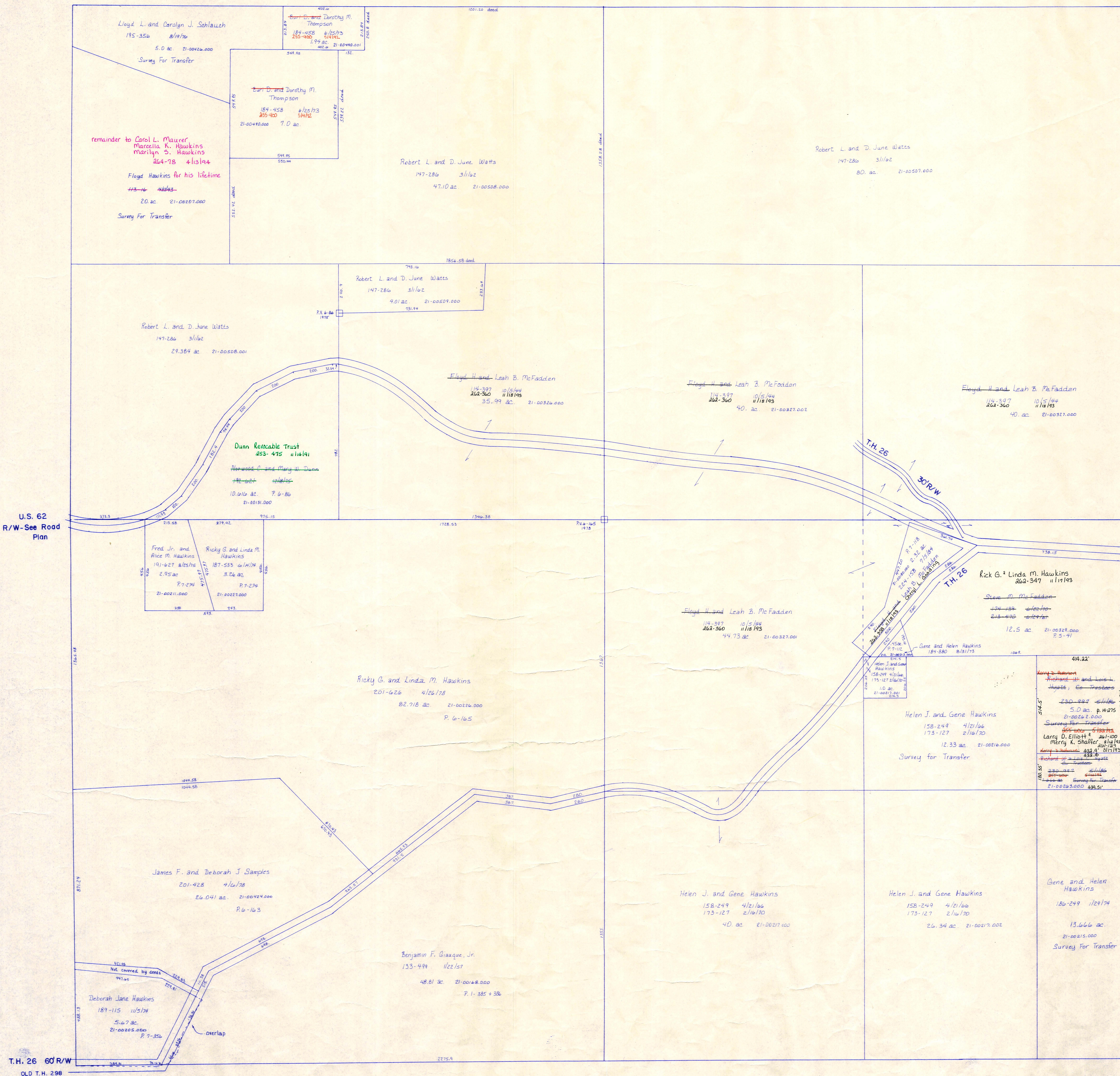


Section 19

R-17

Section 23  
R-11

Section 21  
R-21



This point called NE Cor SE Cor per Plat Vol. 5 Pg. 42 and Vol. 7 Pg. 112 + 118

U.S. 62  
R/W - See Road Plan

Larry D. Elliott + Merry K. Shaffer 261-700 2/15/74 261-700 2/15/74 1.836 ac P. H-275

T-8, R-9, Sec. 22  
RICHLAND TWP.  
SCALE 1" = 200'

Coshocton County

LET IT BE KNOWN, THIS MAP HAS BEEN PREPARED AS A REFERENCE GUIDE TO PROPERTY OWNERSHIP. WE BELIEVE THIS INFORMATION TO BE CORRECT AND CURRENT, HOWEVER, IT IS NOT INTENDED FOR ANY LEGAL USE, WHETHER IT BE IN SALES, TRANSFERS, TRUSTS, LEASES OF ANY TYPE, ETC., AND DO NOT ACCEPT RESPONSIBILITY FOR ERRORS OF ANY NATURE OR OMISSIONS CONTAINED HEREIN.

R-16