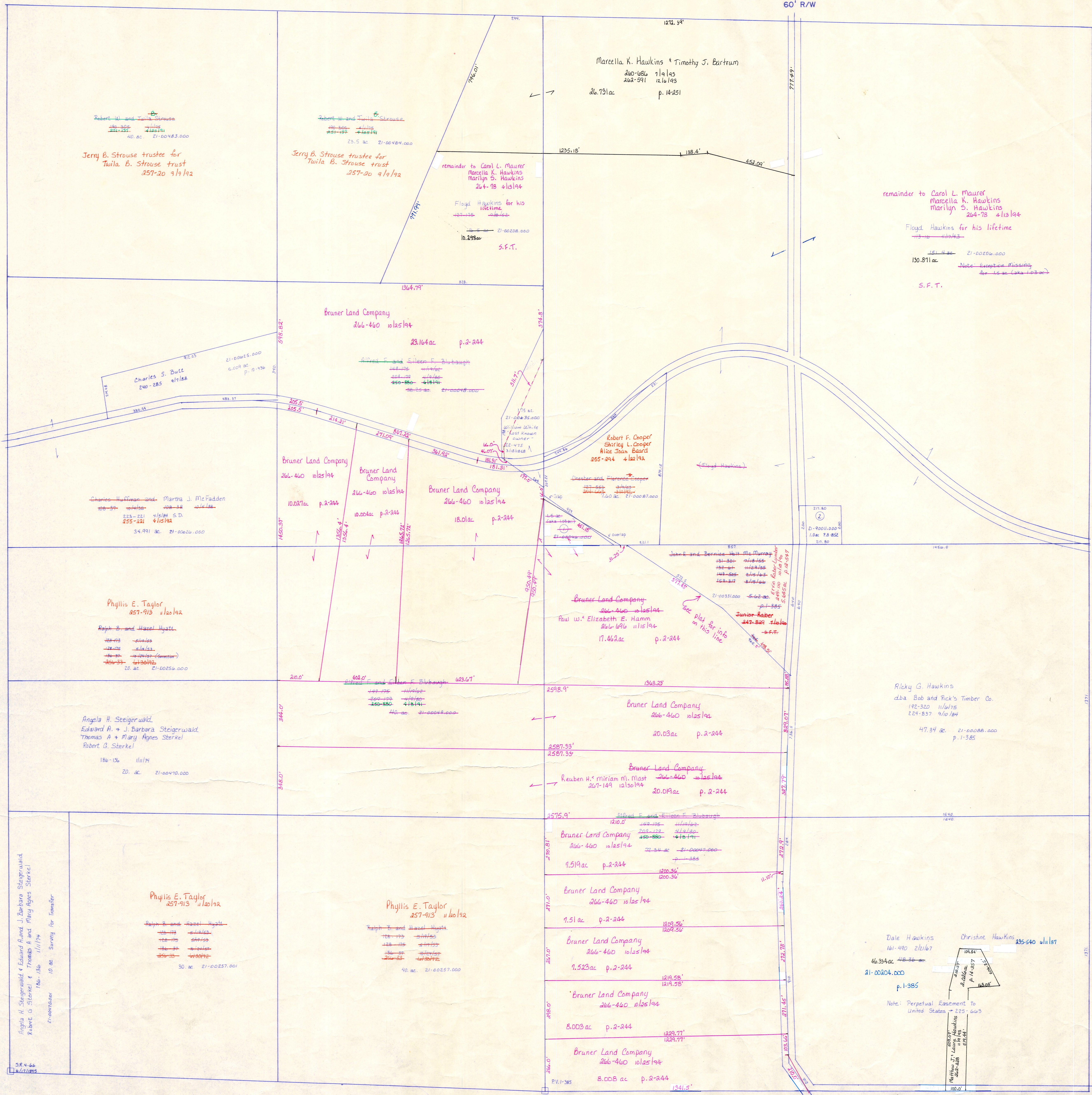


R-12  
Section 18

C.H. 25  
60' R/W



R-6  
Section 24

R-16  
Section 22

U.S. 62  
R/W - See Road Plans

S.R. 206  
60' R/W  
OLD TH. 298

- 21-00090.000 1.5 ac  
Eileen F. Bubaugh  
240-285 4/18/84  
201-178 4/18/84
- 21-00111.000 1.0 ac P. 2-244  
Holmes-Wayne Electric Cooperative, Inc.  
215-238 1/3/82

Coshocton County

T-8, R-9, Sec. 23  
RICHLAND TWP.  
SCALE 1"=200'

LET IT BE KNOWN, THIS MAP HAS BEEN PREPARED AS A REFERENCE GUIDE TO PROPERTY OWNERSHIP. WE BELIEVE THIS INFORMATION TO BE CORRECT AND CURRENT, HOWEVER, IT IS NOT INTENDED FOR ANY LEGAL USE, WHETHER IT BE IN SALES, TRANSFERS, TRADES, LEASES OF ANY TYPE, ETC., AND DO NOT ACCEPT RESPONSIBILITY FOR ERRORS OF ANY NATURE OR OMISSIONS CONTAINED HEREIN.

R-11