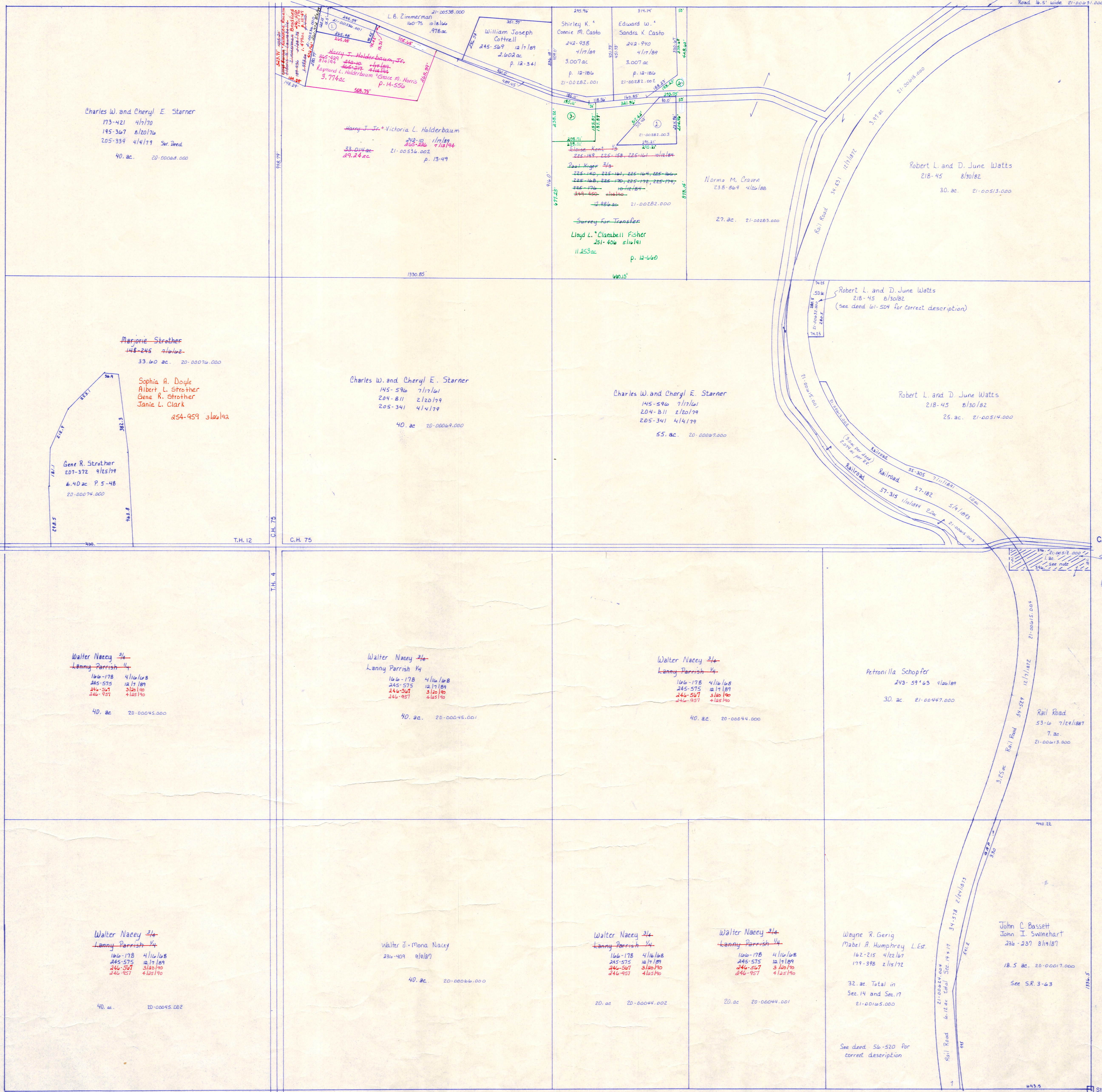


Section 7
R-9

CH.75 60'R/W

T.H. 32 60'R/W
OLD TH. 432

T.H.14 60'R/W
OLD T.H. 404



Section 13
R-13

CH.75 30'R/W

NOTE - Overlap Possible Explanation
John Marks sold this one ac. as part of the deed description to the Rail Road in deed 53-6. His heirs were not aware of this and later sold it again as part of the J. A. Marks estate on deed 71-476, which leads to Robert Watts.

Section 15
R-3

T.H. 12 30'R/W

T.H. 12

- ① Raymond L. Holderbaum & Grace M. Norris 2011p 4/17/91
- ② Eldon L. Kurebitze Zimmerman 187-32 2/28/90 241-699 2/28/90 7/3 ac p. 13-39
- ③ Maxwell M. Lohmick & Robert S. Condon Sr. & Phyl L. Hankins 243-505 s/w/89 1.0 ac p. 12-227
- ④ Lloyd L. Clambell Fisher 251-406 s/w/91 1.0 ac p. 12-459
- ⑤ Lloyd L. Clambell Fisher 251-406 s/w/91 1.0 ac p. 12-460

T.H. 4 60'R/W
OLD T.H. 404

Section 17
R-7

T-8, R-9, Sec. 14
RICHLAND TWP.
SCALE 1"=200'

LET IT BE KNOWN, THIS MAP HAS BEEN PREPARED AS A REFERENCE GUIDE TO PROPERTY OWNERSHIP. WE BELIEVE THIS INFORMATION TO BE CORRECT AND CURRENT, HOWEVER, IT IS NOT INTENDED FOR ANY LEGAL USE, WHETHER IT BE IN SALES, TRANSFERS, TRADES, LEASES OF ANY TYPE, ETC., AND DO NOT ACCEPT RESPONSIBILITY FOR ERRORS OF ANY NATURE OR OMISSIONS CONTAINED HEREIN.

