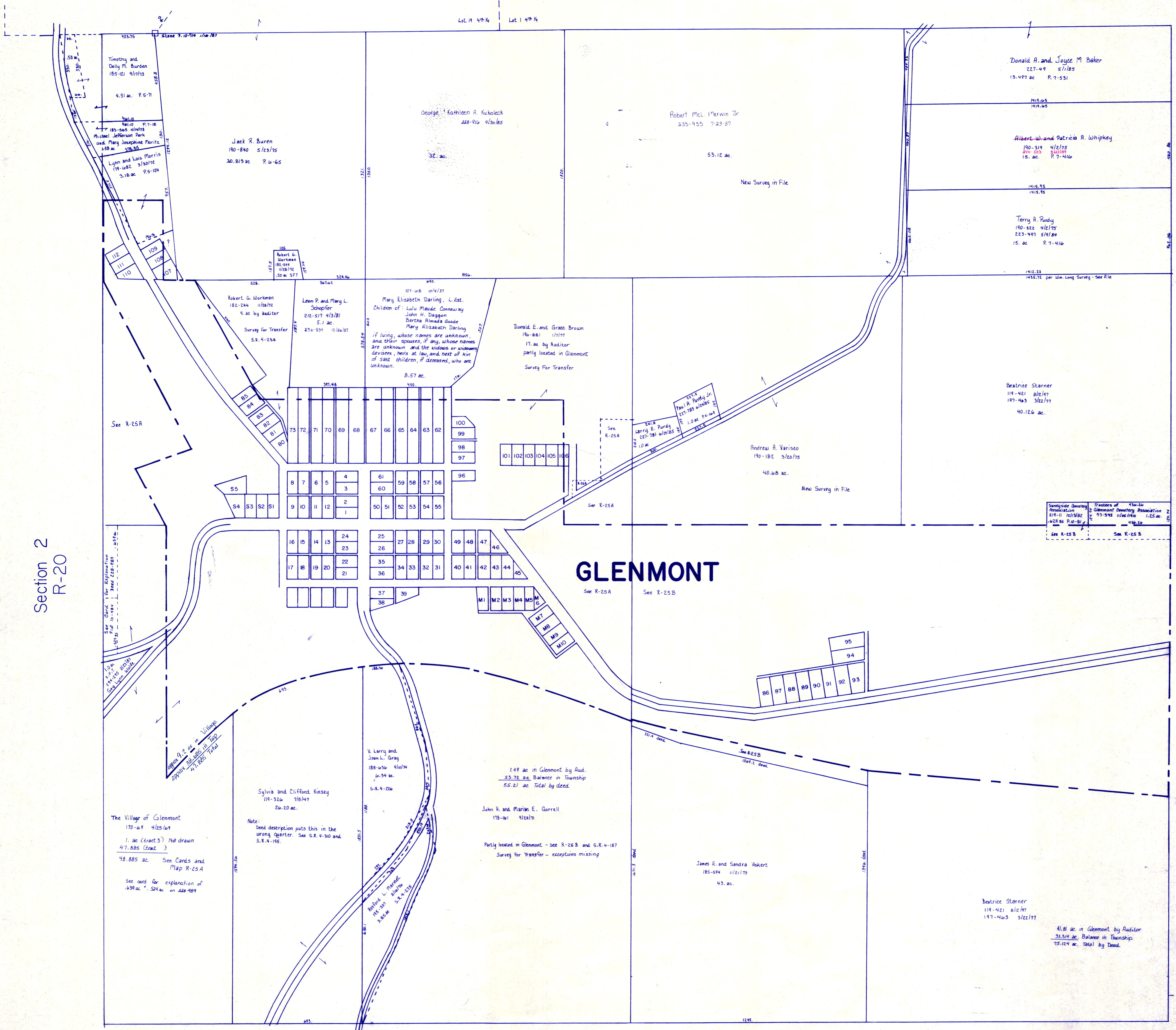


Knox Twp.  
KX-19



Section 2  
R-20

RANGE 8

Section 5  
R-30

**GLENMONT**

The Village of Glenmont  
170-69 4/25/65  
1. ac (tract 3) Not drawn  
47.885 (tract )  
48.885 ac. See Cards and  
Map R-25A  
See card for explanation of  
439 ac. 50% ac. on 228-789

Sylvia and Clifford Kinsey  
119-326 7/5/47  
26.20 ac.  
Note:  
Deed description puts this in the  
wrong quarter. See S.R. 4-30 and  
S.R. 4-195.

H. Leroy and  
Joan L. Gray  
186-656 9/16/74  
16.24 ac.  
S.R. 4-226

John H. and Marion E. Gorrell  
178-161 9/24/71  
Partly located in Glenmont - see R-26 B and S.R. 4-187  
Survey For Transfer - exceptions missing

James E. and Sandra Rokert  
185-644 11/21/75  
43. ac.

Beatrice Starner  
119-421 8/12/47  
197-463 3/22/77

41.81 ac in Glenmont by Auditor  
33.314 ac. Balance in Township  
75.124 ac. Total by Deed.

Section 10  
R-24

T-8, R-9, Sec 1  
RICHLAND TWP.  
SCALE 1" = 200'

LET IT BE KNOWN, THIS MAP HAS BEEN PREPARED  
AS A REFERENCE GUIDE TO PROPERTY OWNERSHIP.  
WE BELIEVE THIS INFORMATION TO BE CORRECT  
AND CURRENT, HOWEVER, IT IS NOT INTENDED  
FOR ANY LEGAL USE, WHETHER IT BE IN SALES,  
TRANSFERS, TRADES, LEASES OF ANY TYPE, ETC.,  
AND DO NOT ACCEPT RESPONSIBILITY FOR ERRORS  
OF ANY NATURE OR OMISSIONS CONTAINED HEREIN.

R-25