

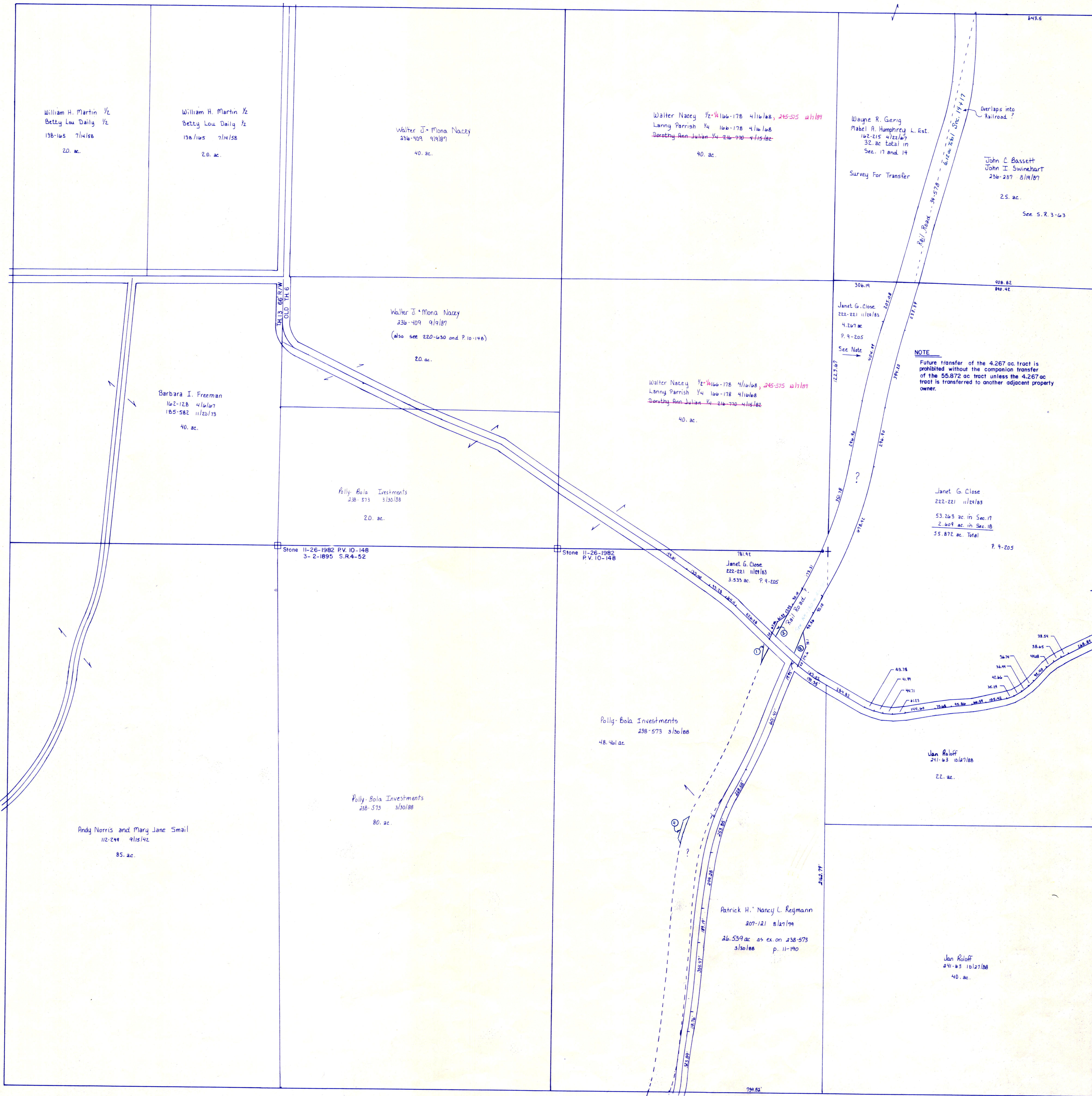
Section 14
R-8

T.H. 4 60' R/W
OLD T.H. 404

T.H. 4 66' R/W
OLD T.H. 404

Section 16
R-2

T.H. 11 40' R/W
OLD T.H. 10



Stone 4-19-1887
S.R. 3-63

Stone 11-26-1982 P.V. 10-148
3-2-1895 S.R. 4-52

Stone 11-26-1982 P.V. 10-148

T.H. 13 66' R/W
OLD T.H. 6

1. Rail Road .106 ac # 9 Pg 51 R.R. Map
86-203 7/17/1917
2. Rail Road .055 ac # 5 Pg 51 R.R. Map
84-150 5/31/1916
3. Rail Road .070 ac # 6 Pg 51 R.R. Map
84-150 5/31/1916
4. Rail Road .024 ac # 4 Pg 52 R.R. Map
86-203 7/17/1917

T.H. 5 No Record
OLD T.H. 352

Section 18
R-12

Section 24
R-6

T-8, R-9, Sec. 17
RICHLAND TWP.
SCALE 1" = 200'

LET IT BE KNOWN, THIS MAP HAS BEEN PREPARED AS A REFERENCE GUIDE TO PROPERTY OWNERSHIP. WE BELIEVE THIS INFORMATION TO BE CORRECT AND CURRENT, HOWEVER, IT IS NOT INTENDED FOR ANY LEGAL USE, WHETHER IT BE IN SALES, TRANSFERS, TRADES, LEASES OF ANY TYPE, ETC. AND DO NOT ACCEPT RESPONSIBILITY FOR ERRORS OF ANY NATURE OR OMISSIONS CONTAINED HEREIN.

R-7