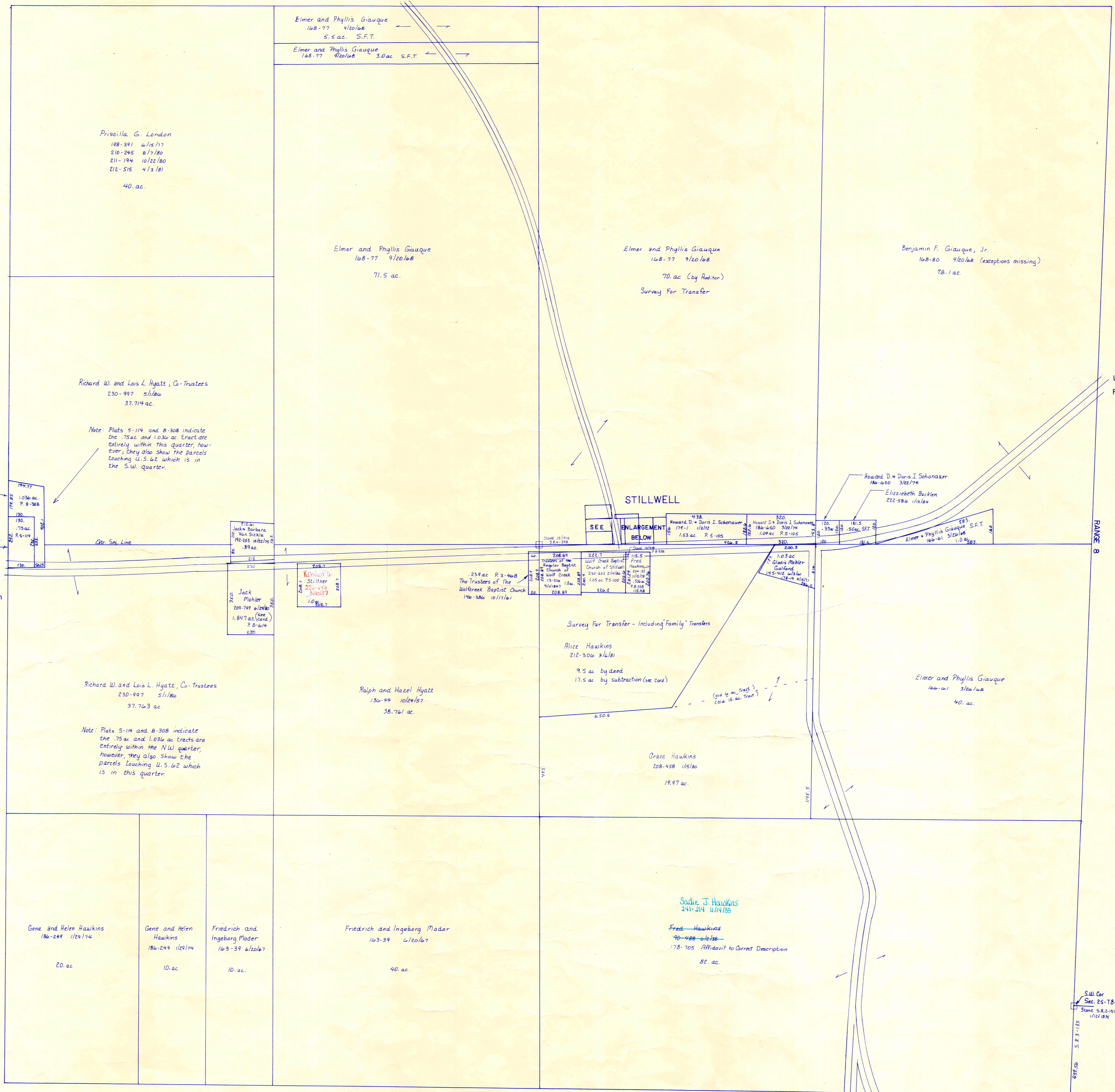


Section 20

R-22

T.H. 24 40'R/W
OLD T.H. 299



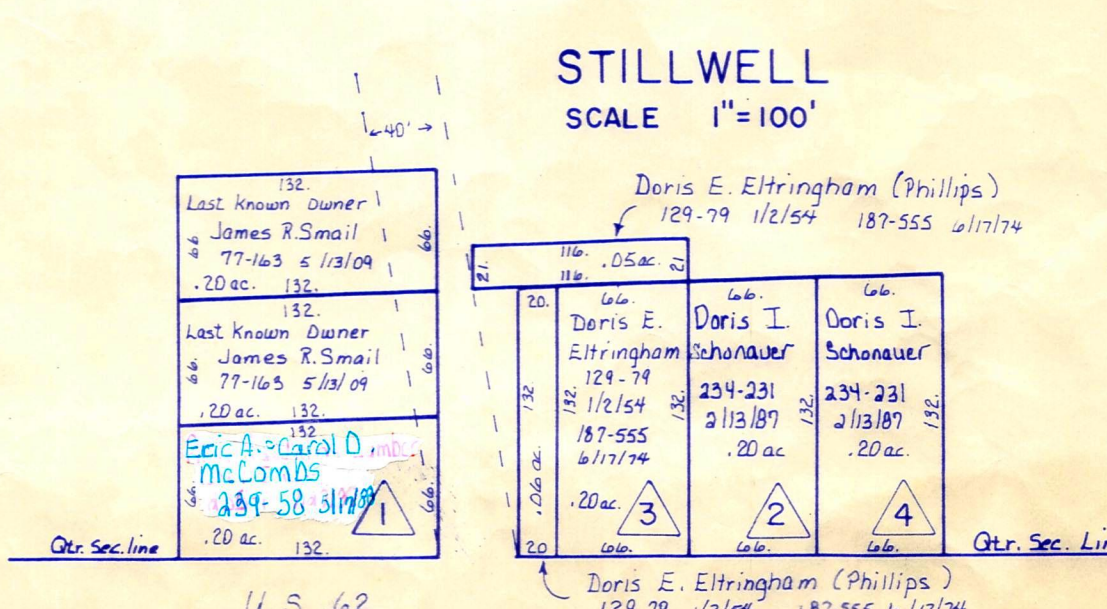
Section 22
R-16

Coshocton County

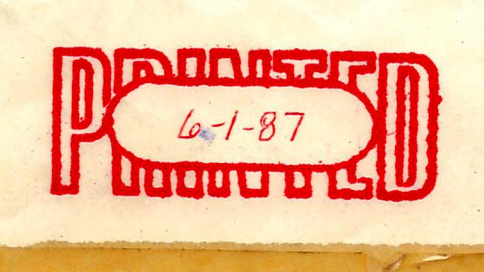
C.H. 270
R/W - Unknown

T-8, R-9, Sec. 21
RICHLAND TWP.
SCALE 1" = 200'

LET IT BE KNOWN, THIS MAP HAS BEEN PREPARED AS A REFERENCE GUIDE TO PROPERTY OWNERSHIP. WE BELIEVE THIS INFORMATION TO BE CORRECT AND CURRENT, HOWEVER, IT IS NOT INTENDED FOR ANY LEGAL USE, WHETHER IT BE IN SALES, TRANSFERS, TRADES, LEASES OF ANY TYPE, ETC., AND DO NOT ACCEPT RESPONSIBILITY FOR ERRORS OF ANY NATURE OR OMISSIONS CONTAINED HEREIN.



Note: The measure made by Stillwell was commenced too far North by 6 ft. at the east end, hence the lots are a little longer as the North line was marked and buildings placed to it and is so to remain. The Sec. line being indefinite at that time. See S.R. 4 pg. 398



R-21