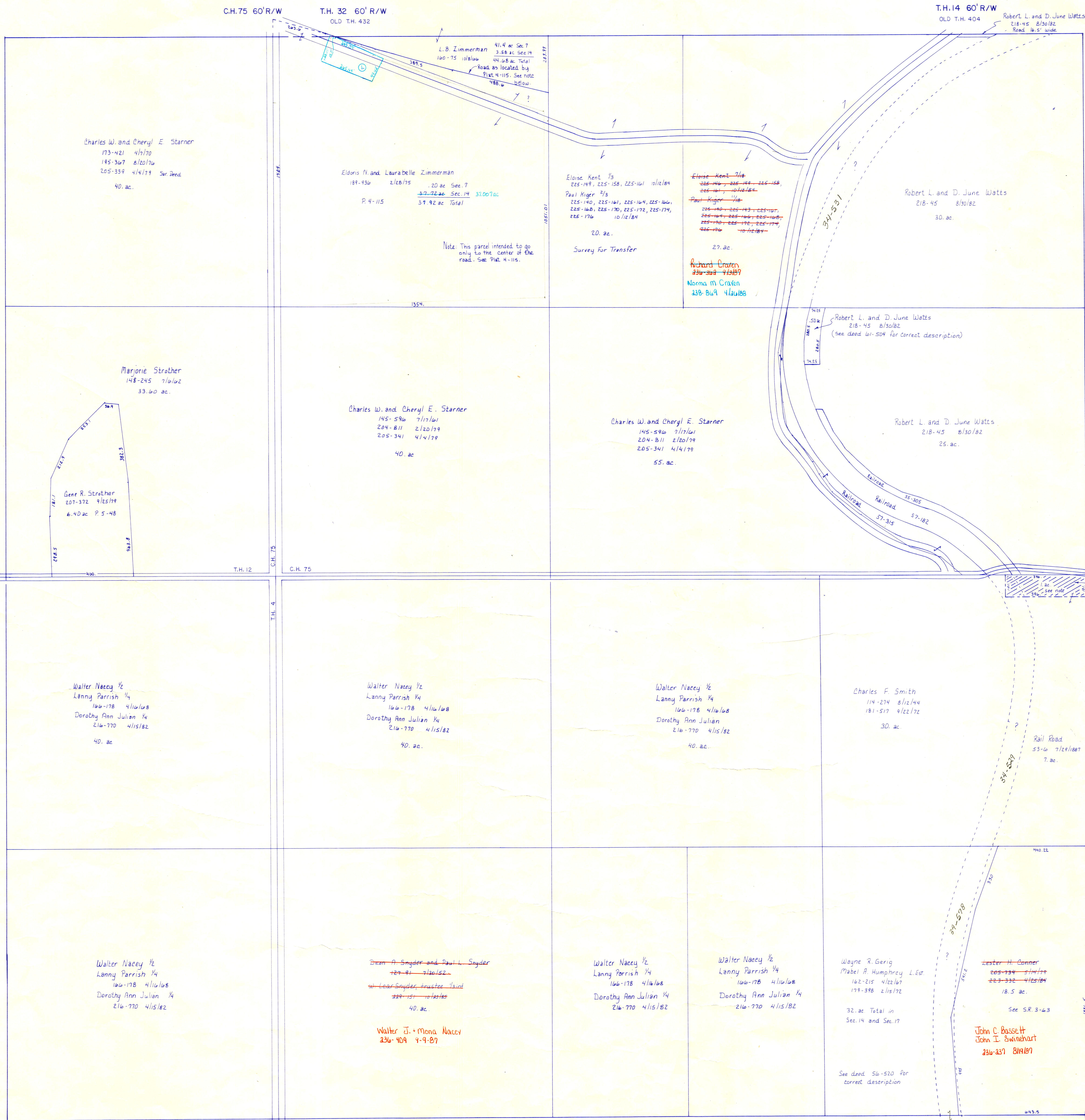


Section 7
R-9

Section 13
R-13

Section 15
R-3



NOTE: Overlap Possible Explanation
John Marks sold this one ac. as part of the deed description to the Rail Road in deed 53-6. His heirs were not aware of this and later sold it again as part of the J. A. Marks estate on deed 71-476, which leads to Robert Watts.

Eldoris N. Laurabelle Zimmerman 189-936 4/18/15
214-297 2/18/88 7.32 ac p. 13-37

T.H. 4 60' R/W
OLD T.H. 404

Section 17
R-7

T-8, R-9, Sec. 14
RICHLAND TWP
SCALE 1" = 200'

