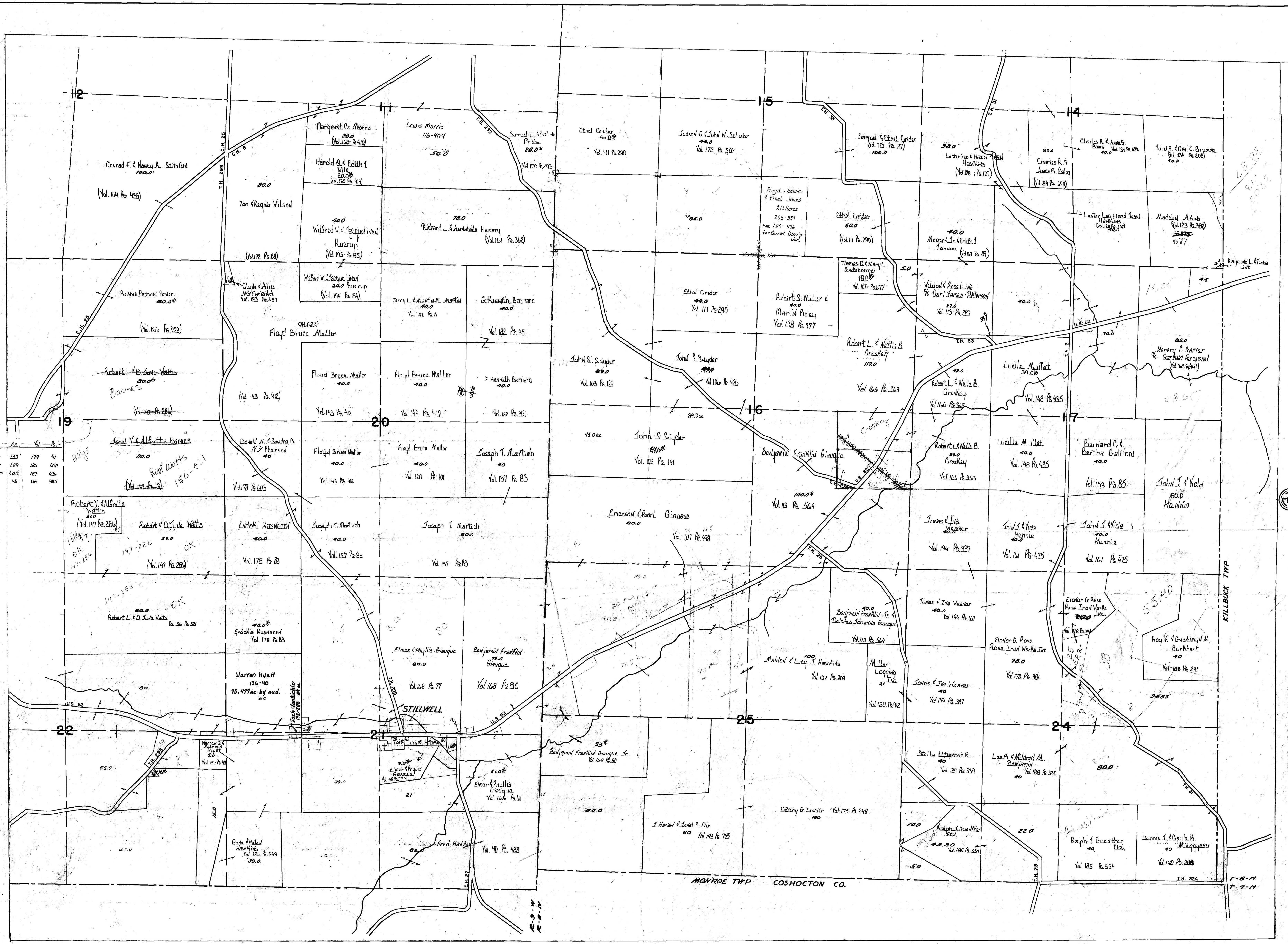


No.	Owner	Ac.	Vol.	Pg.
1	Schomauer	1.53	179	41
2	Schomauer	1.09	186	450
3	Ellis-Wyghan	1.05	187	436
4	Hawkins	.45	184	880



HOLMES COUNTY
RICHLAND TOWNSHIP
 S.E. PART

SCALE: 1" = 660'