

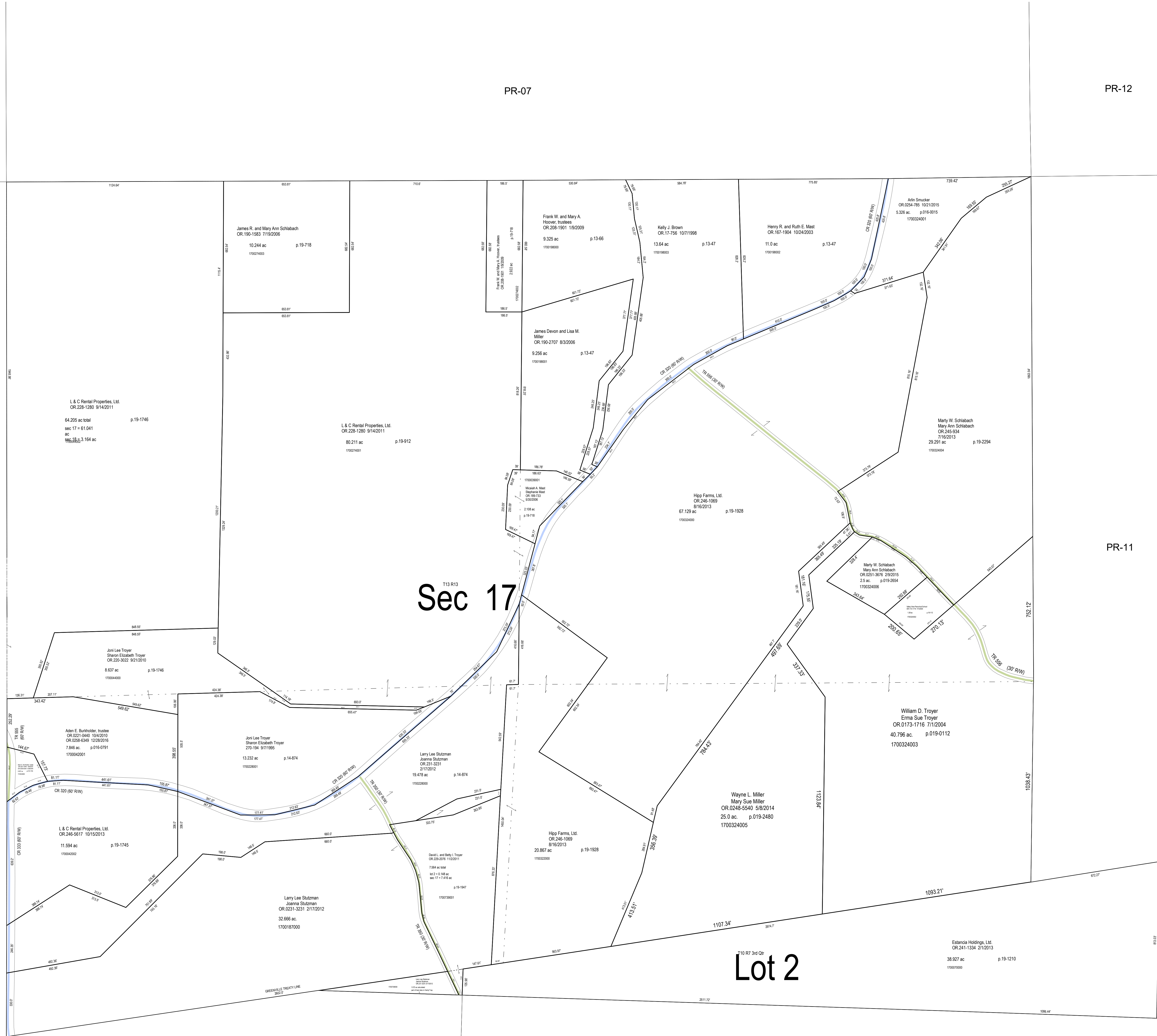
PR-02

PR-07

PR-12

PR-01

PR-11



Sec 17

Lot 2

H-06

H-12



LET IT BE KNOWN, THIS MAP HAS BEEN PREPARED AS A REFERENCE GUIDE TO PROPERTY OWNERSHIP. WE BELIEVE THIS INFORMATION TO BE CORRECT AND CURRENT. HOWEVER, IT IS NOT INTENDED FOR ANY LEGAL USE, WHETHER IT BE SALES, TRANSFERS, TRADES, LEASES OF ANY TYPE, ETC. AND DO NOT ACCEPT RESPONSIBILITY FOR ERRORS OF ANY NATURE OR OMISSIONS CONTAINED HEREIN.

S.F.T.
new survey required for next transfer

Last Revision: 1/3/2019



**Lot 2, 3rd Qtr, T-10 R-7
Sec. 17, T-13, R-13
Prairie Twp.
Holmes County, Ohio**

PR-06