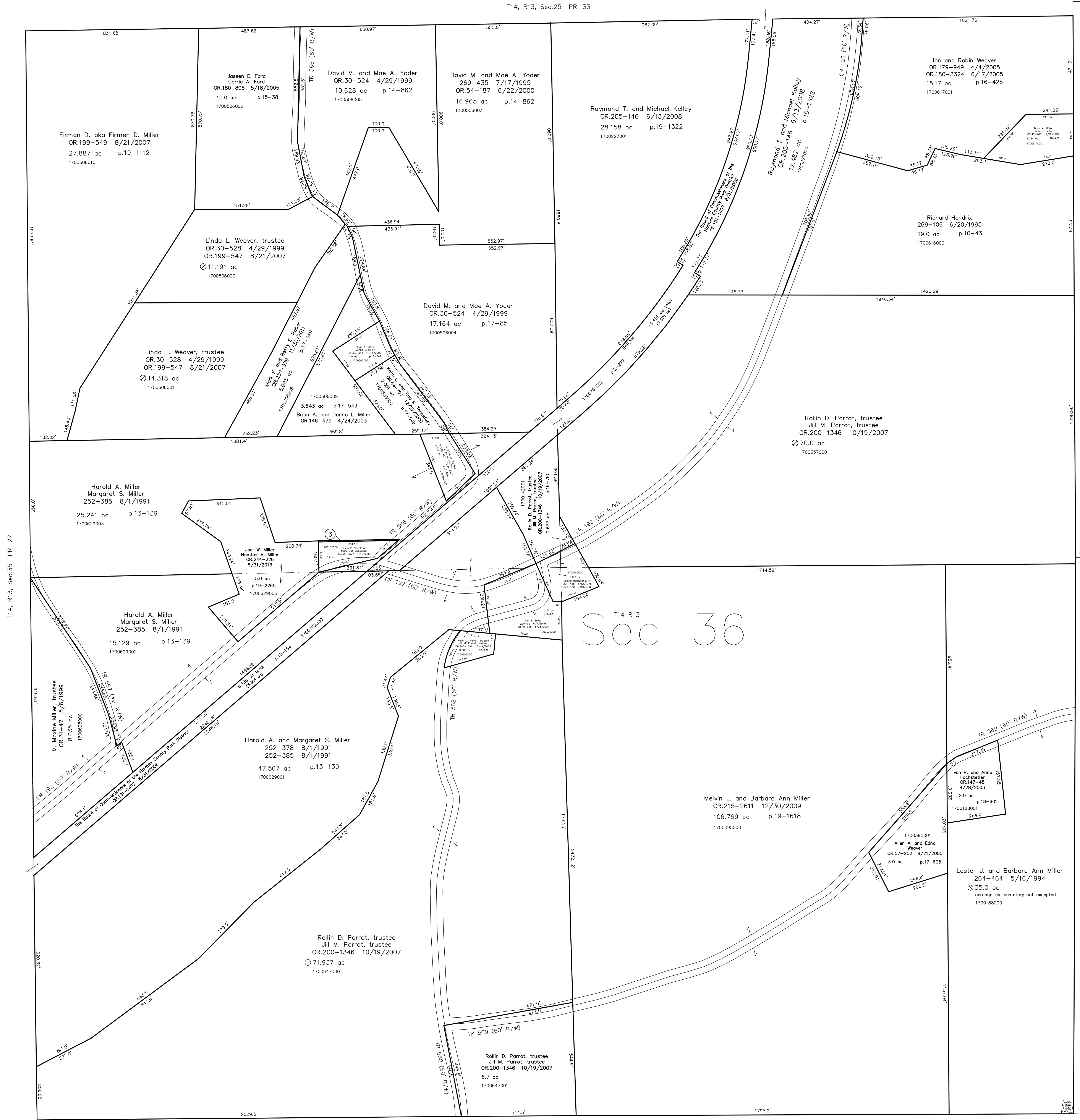


1700629004 Jason P. Speelman and Mary Lisa Speelman
OR.205-2577 7/16/2008
0.044 ac p.16-99

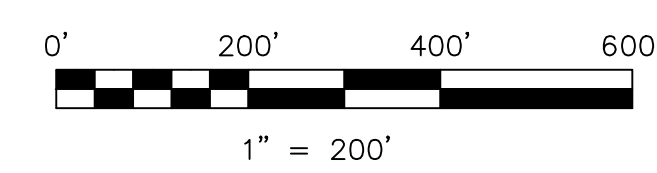


T14, R13, Sec.35 PR-27

Salt Creek Township T15, R12, Sec.31 SC-13

Last Revision: 5/31/2013

T-14, R-13, Sec.36
Prairie Twp.
Holmes County, Ohio



LET IT BE KNOWN, THIS MAP HAS BEEN PREPARED AS A REFERENCE GUIDE TO PROPERTY OWNERSHIP. WE BELIEVE THIS INFORMATION TO BE CORRECT AND CURRENT, HOWEVER IT IS NOT INTENDED FOR ANY LEGAL USE, WHETHER IT BE IN SALES, TRANSFERS, TRADES, LEASES OF ANY TYPE, ETC., AND DO NOT ACCEPT RESPONSIBILITY FOR ERRORS OF ANY NATURE OR OMISSIONS CONTAINED HEREIN.

new survey required for next transfer

PR-32

