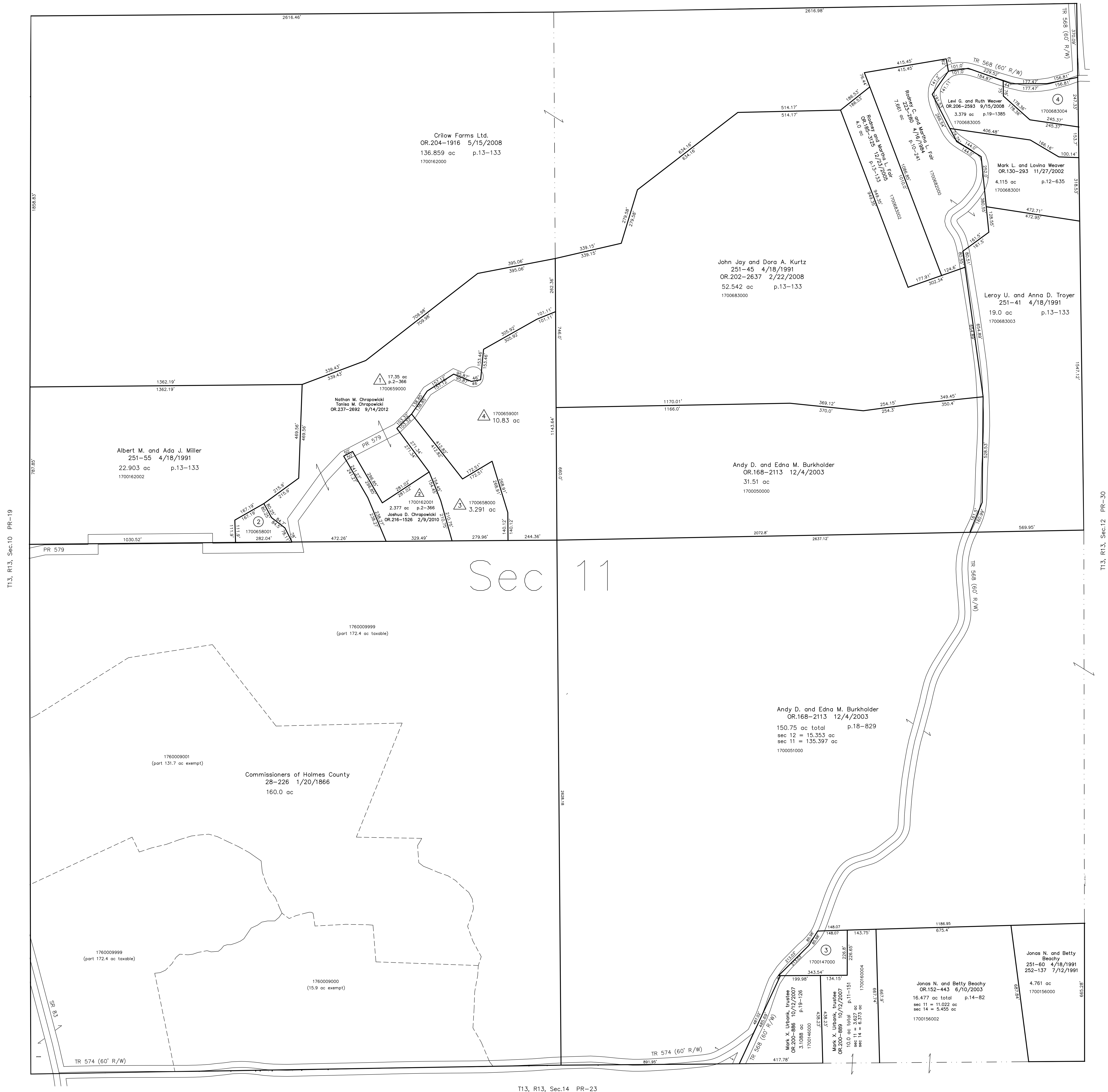


000000000 ① not used

- 1700658001 ② Albert M. and Ada J. Miller  
243-453 5/23/1989  
0.819 ac p.12-216
- 1700147000 ③ Mark X. Urbank, trustee  
OR.200-886 10/12/2007  
51.21 ac p.4-138
- 1700683004 ④ Levi G. and Ruth Weaver  
OR.88-780 9/27/2001  
1.528 ac p.18-85

T13, R13, Sec.2 PR-26



T13, R13, Sec.10 PR-19

T13, R13, Sec.12 PR-30

# Sec 11

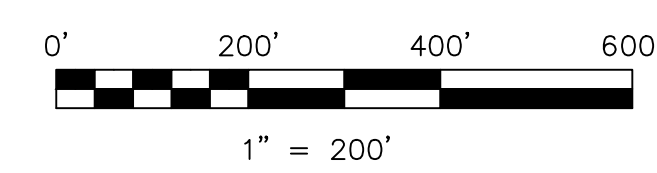
T13, R13, Sec.14 PR-23

△ Maple Springs Subdivision  
Plot 2-366 Platted 8/4/2003  
△ see map

△ see map

1700658000 △ Joshua David Chrapowicki  
OR.167-2995 11/3/2003  
3.291 ac p.2-366

1700659001 △ Alex and Debra Ann Chrapowicki  
207-626 10/29/1979  
217-235 6/7/1982  
221-769 10/6/1983  
251-83 4/18/1991  
10.83 ac p.2-366



LET IT BE KNOWN, THIS MAP HAS BEEN PREPARED AS A REFERENCE GUIDE TO PROPERTY OWNERSHIP. WE BELIEVE THIS INFORMATION TO BE CORRECT AND CURRENT, HOWEVER IT IS NOT INTENDED FOR ANY LEGAL USE, WHETHER IT BE IN SALES, TRANSFERS, TRADES, LEASES OF ANY TYPE, ETC., AND DO NOT ACCEPT RESPONSIBILITY FOR ERRORS OF ANY NATURE OR OMISSIONS CONTAINED HEREIN.

○ new survey required  
○ for next transfer

Last Revision: 9/14/2012

## T-13, R-13, Sec.11 Prairie Twp. Holmes County, Ohio

# PR-25

