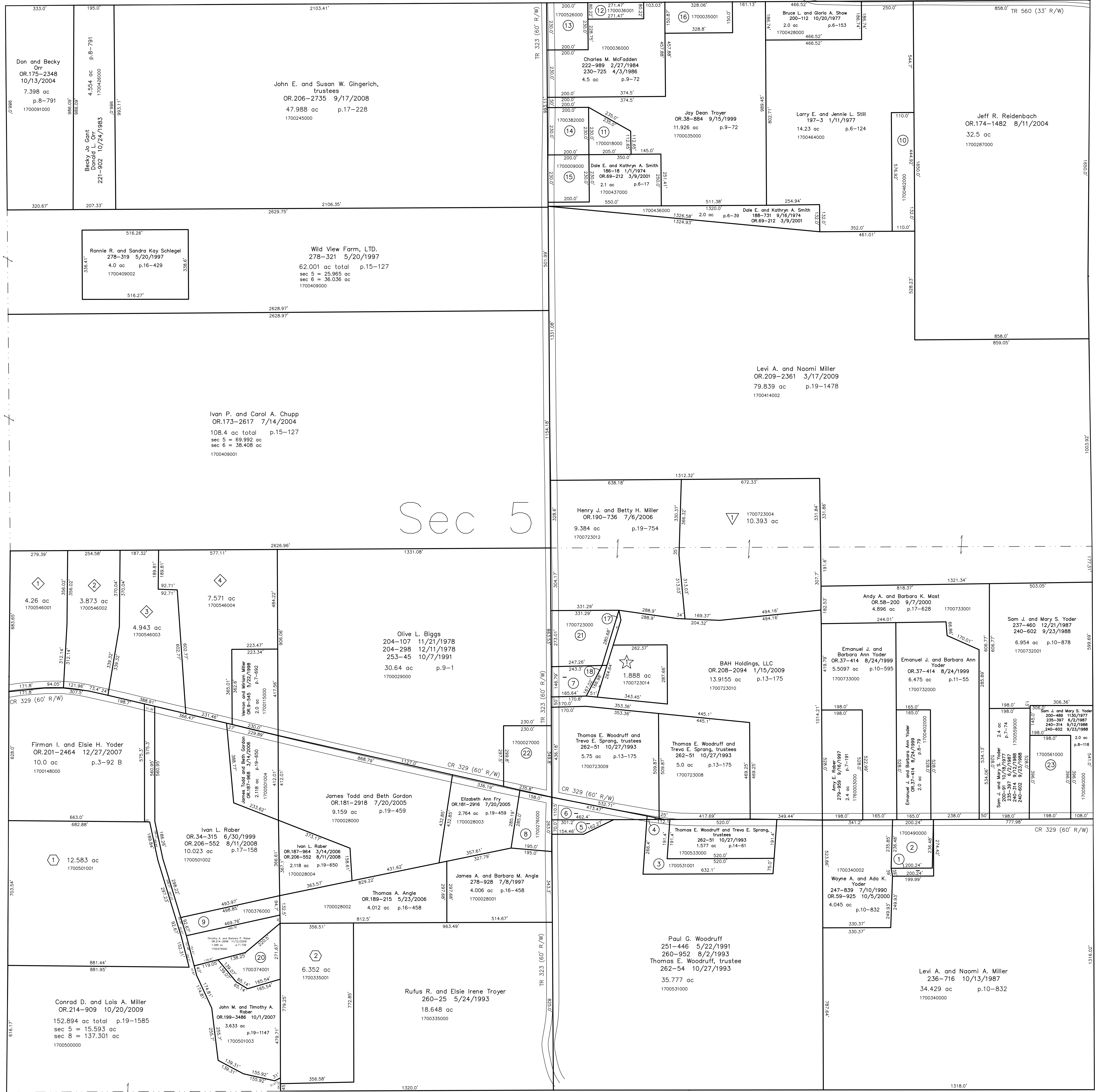


- 170034001 ① Wayne M. and Marie W. Yoder  
OR.76-481 5/31/2001  
0.1977 ac p.10-214
- 170049000 ② Wayne M. and Marie W. Yoder  
OR.76-481 5/31/2001  
1.087 ac p.7-686
- 1700531001 ③ Thomas E. Woodruff and Treva E. Sprang, trustees  
262-51 10/27/1993  
1.577 ac p.14-81
- 1700054001 ④ Thomas E. Woodruff and Treva E. Sprang, trustees  
262-51 10/27/1993  
0.016 ac p.14-81
- 1700531002 ⑤ Stephen O. and Cynthia J. Byler  
257-585 10/16/1992  
0.366 ac p.14-81
- 1700054000 ⑥ Stephen O. and Cynthia J. Byler  
251-769 7/22/1995  
0.674 ac p.14-81
- 1700722000 ⑦ Marlin J. and Victoria J. Yoder  
OR.9-685 5/26/1998  
0.889 ac p.10-463
- 1700276000 ⑧ Ronald D. and Sandra S. Scherer  
232-851 10/22/1986  
1.1 ac p.4-16
- 1700376000 ⑨ Ivan L. Rober  
209-450 5/9/1980  
OR.206-552 8/11/2008  
1.026 ac p.8-602
- 1700462000 ⑩ E. Eugene and Betty June Still  
197-544 4/9/1977  
203-818 10/31/1978  
1.45 ac p.6-133
- 1700018000 ⑪ Gary V. Sless  
OR.178-3432 3/22/2005  
0.8 ac p.7-147
- 1700036001 ⑫ James B. Fliey  
257-390 10/2/1992  
OR.202-2265 2/19/2008  
Deborah Holdiman  
OR.202-2268 2/19/2008  
0.5 ac p.14-51
- 1700526000 ⑬ Thelma and Simon Ball  
OR.200-3100 11/9/2007  
1.056 ac p.6-17
- 1700382000 ⑭ Forefront Properties  
OR.186-2001 5/01/2007  
1.056 ac p.6-17
- 1700009000 ⑮ Dale A. and Elaine P. Baker  
186-16 1/2/1974  
1.056 ac p.6-17
- 1700035001 ⑯ Clifford E. Rattie  
OR.22-575 12/17/1998  
1.134 ac p.16-956
- 1700723011 ⑰ Joseph L. and Nancy L. Hosfeld, trustees  
OR.184-2963 11/16/2005  
0.1355 ac p.19-546
- 1700723013 ⑱ Marlin J. and Victoria J. Yoder  
OR.196-1139 4/24/2007  
0.137 ac p.19-994
- 0000000000 ⑲ not used

- 1700374001 ⑳ John M. and Timothy A. Rober  
OR.199-3486 10/1/2007  
1.163 ac p.19-1147
- 1700723000 ㉑ Joseph L. and Nancy L. Hosfeld, trustees  
OR.167-11 9/26/2003  
1.793 ac p.13-175
- 1700027000 ㉒ Wayne W. and Rachel M. Kuhns  
278-695 6/16/1997  
1.71 ac p.4-122
- 1700561000 ㉓ Sam J. and Mary S. Yoder  
200-81 10/19/1977  
235-397 6/2/1987  
240-314 9/12/1988  
240-602 9/23/1988  
1.8 ac p.7-85

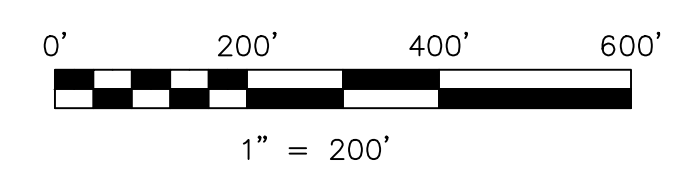
T13, R13, Sec.6 PR-03



- ★ **Diamond View Subdivision**  
Plat 19-1029 Platted 5/3/2007  
1700723014 ★ Wayne W. Kuhns, Meta Weaver, Sam Yoder  
Trustees of the Diamond View School  
OR.202-399 1/18/2008  
1.888 ac p.19-1029
- ▽ **Holmesville Farms Subdivision**  
Plat 19-686 Platted 4/26/2006  
1700723004 ▼ Holmesville Farms, LLC  
OR.186-1794 5/2/2006  
10.393 ac p.19-686
- **Matt and Dick Allotment No.1**  
Plat 2-268 Platted 1/16/1997  
1700501001 ○ Matthew L. Kellert  
276-907 1/23/1997  
12.583 ac p.2-268
- **Matt and Dick Allotment No.1 First Addition**  
Plat 2-396 Platted 6/8/2005  
1700335001 ○ John M. and Timothy A. Rober  
OR.180-3424 6/17/2005  
6.352 ac p.2-396

- ◇ **The Lingenfelter Subdivision**  
Plat 19-1016 Platted 5/8/2007  
1700546001 ◇ David J. & Alice J. Lingenfelter  
226-39 1/15/1985  
4.26 ac p.19-1016
- ◇ 1700546002 ◇ David J. & Alice J. Lingenfelter  
226-39 1/15/1985  
3.873 ac p.19-1016
- ◇ 1700546003 ◇ David J. & Alice J. Lingenfelter  
226-39 1/15/1985  
4.943 ac p.19-1016
- ◇ 1700546004 ◇ David J. & Alice J. Lingenfelter  
226-39 1/15/1985  
7.571 ac p.19-1016

T13, R13, Sec.8 PR-07



LET IT BE KNOWN, THIS MAP HAS BEEN PREPARED AS A REFERENCE GUIDE TO PROPERTY OWNERSHIP. WE BELIEVE THIS INFORMATION TO BE CORRECT AND CURRENT, HOWEVER IT IS NOT INTENDED FOR ANY LEGAL USE, WHETHER IT BE IN SALES, TRANSFERS, TRADES, LEASES OF ANY TYPE, ETC., AND DO NOT ACCEPT RESPONSIBILITY FOR ERRORS OF ANY NATURE OR OMISSIONS CONTAINED HEREIN.

new survey required for next transfer

Last Revision: 11/12/2009

**T-13, R-13, Sec.5  
Prairie Twp.  
Holmes County, Ohio**

**PR-08**