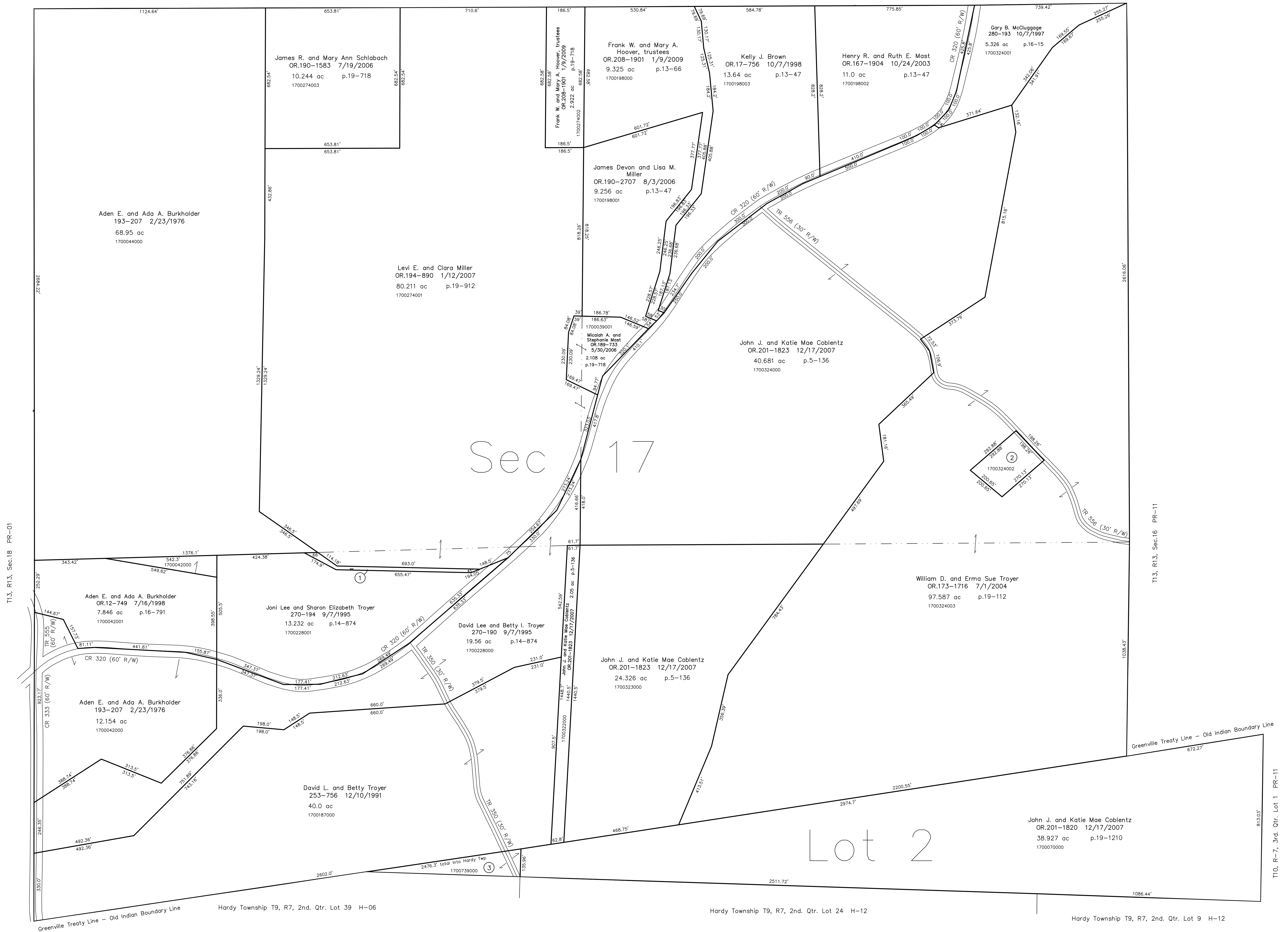


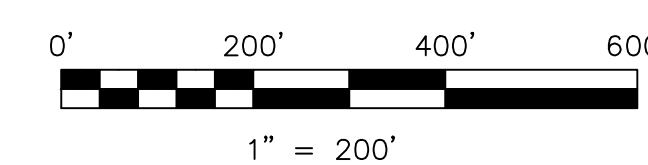
- 1700044001 ① Aden E. and Ada A. Burkholder
193-207 2/23/1976
0.36 ac
- 1700324002 ② Valley View Parochial School
OR.173-1714 7/1/2004
1.28 ac p.19-112
- 1700739000 ③ David L. and Betty Troyer
253-756 12/10/1991
1.72 ac

T13, R13, Sec.8 PR-07



Last Revision: 1/9/2009

**T-10, R-7, 3rd. Qtr. Lot 2
T-13, R-13, Sec.17
Prairie Twp.
Holmes County, Ohio**



LET IT BE KNOWN, THIS MAP HAS BEEN PREPARED AS A REFERENCE GUIDE TO PROPERTY OWNERSHIP. WE BELIEVE THIS INFORMATION TO BE CORRECT AND CURRENT, HOWEVER IT IS NOT INTENDED FOR ANY LEGAL USE, WHETHER IT BE IN SALES, TRANSFERS, TRADES, LEASES OF ANY TYPE, ETC., AND DO NOT ACCEPT RESPONSIBILITY FOR ERRORS OF ANY NATURE OR OMISSIONS CONTAINED HEREIN.

new survey required
for next transfer

PR-06