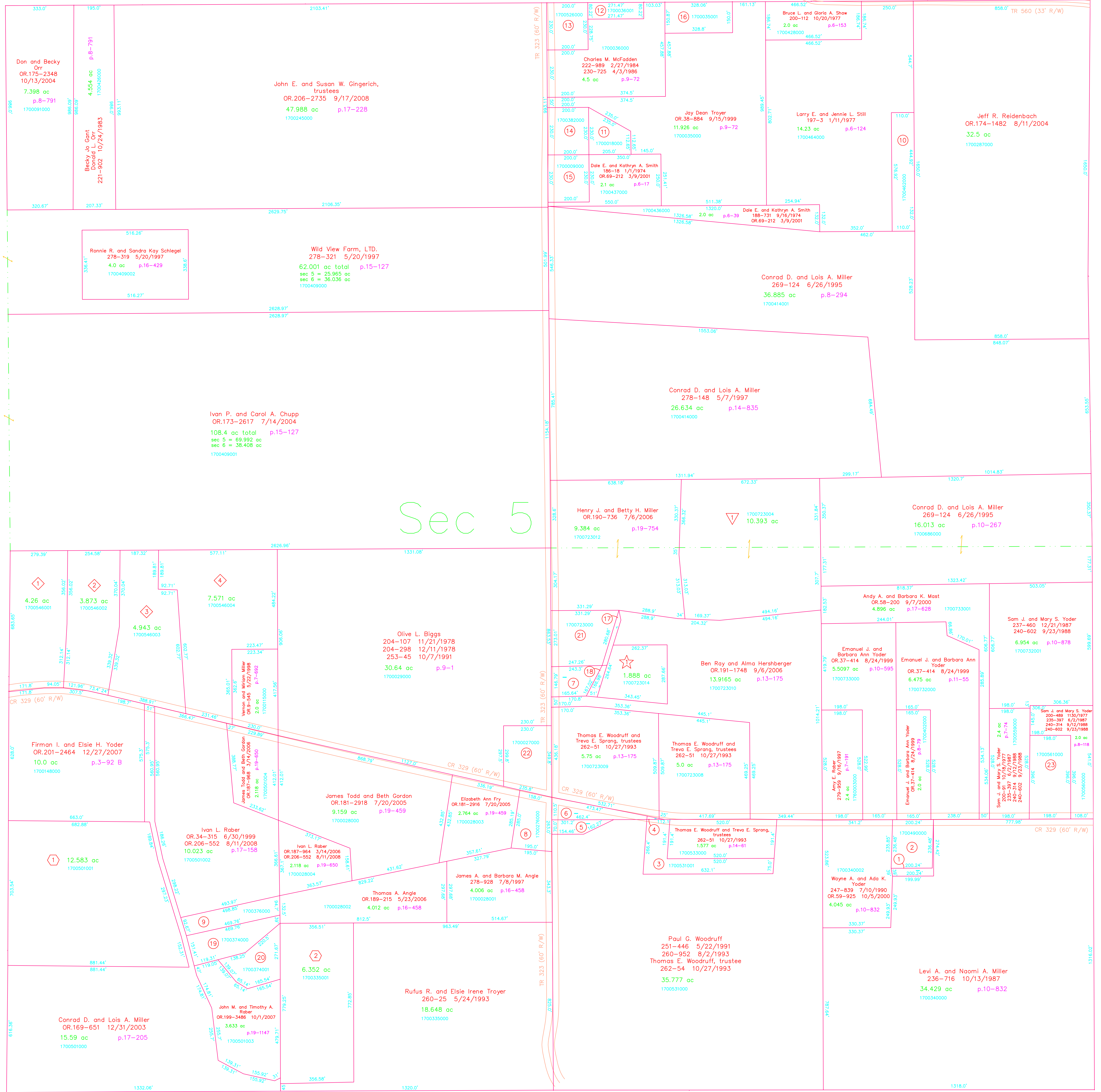


- 170034001 ① Wayne M. and Marie W. Yoder
OR.76-481 5/31/2001
0.1977 ac p.10-214
- 170049000 ② Wayne M. and Marie W. Yoder
OR.76-481 5/31/2001
1.087 ac p.7-686
- 1700531001 ③ Thomas E. Woodruff and Treva E. Sprang, trustees
262-51 10/27/1993
1.577 ac p.14-61
- 1700054001 ④ Thomas E. Woodruff and Treva E. Sprang, trustees
262-51 10/27/1993
0.016 ac p.14-61
- 1700531002 ⑤ Stephen O. and Cynthia J. Byler
257-585 10/16/1992
0.366 ac p.14-61
- 1700054000 ⑥ Stephen O. and Cynthia J. Byler
257-585 10/16/1992
0.674 ac p.14-61
- 1700722000 ⑦ Marlin J. and Victoria J. Yoder
OR.9-685 5/26/1998
0.889 ac p.10-463
- 1700276000 ⑧ Ronald D. and Sandra S. Scherer
232-851 10/22/1986
1.1 ac p.4-16
- 1700376000 ⑨ Ivan L. Rober
209-450 5/9/1980
OR.206-552 5/11/2008
1.026 ac p.8-602
- 1700462000 ⑩ E. Eugene and Betty June Still
197-544 4/9/1977
203-818 10/31/1978
1.45 ac p.6-133
- 1700018000 ⑪ Gary V. Stree
OR.178-355 4/4/2001
OR.178-3432 3/22/2005
0.8 ac p.7-747
- 1700036001 ⑫ James B. Flgley
257-390 10/2/1992
OR.202-2265 2/19/2008
Deborah Holdiman
OR.202-2268 2/19/2008
0.5 ac p.14-51
- 1700526000 ⑬ Thelma and Simon Ball
OR.200-310 11/29/2007
1.056 ac p.6-17
- 1700382000 ⑭ Forefront Properties
OR.186-2001 5/01/2007
1.056 ac p.6-17
- 1700090000 ⑮ Dale A. and Elaine P. Baker
186-16 1/2/1974
1.056 ac p.6-17
- 1700035001 ⑯ Clifford E. Rattie
OR.22-575 12/17/1998
1.134 ac p.16-956
- 1700723011 ⑰ Joseph L. and Nancy L. Hasfeld, trustees
OR.184-2953 11/16/2005
0.1355 ac p.19-546
- 1700723013 ⑱ Marlin J. and Victoria J. Yoder
OR.196-1139 4/24/2007
0.137 ac p.19-994
- 1700374000 ⑲ Ivan L. and Anna E. Rober
196-582 12/3/1976
263-326 2/1/1994
OR.206-552 8/11/2008
1.289 ac p.7-739
- 1700374001 ⑳ John M. and Timothy A. Rober
OR.199-3486 10/1/2007
1.163 ac p.19-1147
- 1700723000 ㉑ Joseph L. and Nancy L. Hasfeld, trustees
OR.167-11 9/26/2003
1.793 ac p.13-175
- 1700027000 ㉒ Wayne W. and Rachel M. Kuhns
278-695 6/16/1997
1.71 ac p.4-122
- 1700561000 ㉓ Sam J. and Mary S. Yoder
200-91 10/19/1977
235-397 6/2/1987
240-314 9/12/1988
240-602 9/23/1988
1.8 ac p.7-85

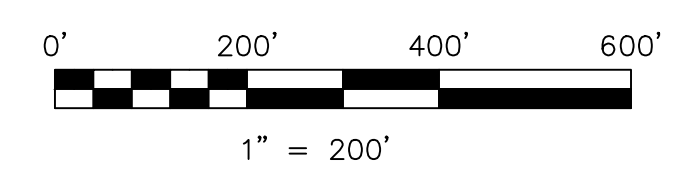
T13, R13, Sec.6 PR-03



T13, R13, Sec.8 PR-07

- ① **Diamond View Subdivision**
Plat 19-1029 Platted 5/3/2007
- 1700723014 ① **Wayne W. Kuhns, Marla Weaver, Sam Yoder**
Trustees of the Diamond View School
OR.202-399 1/18/2008
1.888 ac p.19-1029
- ② **Holmesville Farms Subdivision**
Plat 19-686 Platted 4/26/2006
- 1700723004 ② **Holmesville Farms, LLC**
OR.186-1794 5/2/2006
10.393 ac p.19-686
- ③ **Matt and Dick Allotment No.1**
Plat 2-268 Platted 1/16/1997
- 1700501001 ③ **Matthew L. Kellert**
276-907 1/23/1997
12.583 ac p.2-268
- Matt and Dick Allotment No.1 First Addition**
Plat 2-396 Platted 6/8/2005
- 1700335001 ④ **John M. and Timothy A. Rober**
OR.180-3424 6/17/2005
6.352 ac p.2-396

- ⑤ **The Lingenfelter Subdivision**
Plat 19-1016 Platted 5/8/2007
- 1700546001 ⑤ **David J. & Alice J. Lingenfelter**
226-39 1/15/1985
4.26 ac p.19-1016
- 1700546002 ⑤ **David J. & Alice J. Lingenfelter**
226-39 1/15/1985
3.873 ac p.19-1016
- 1700546003 ⑤ **David J. & Alice J. Lingenfelter**
226-39 1/15/1985
4.943 ac p.19-1016
- 1700546004 ⑤ **David J. & Alice J. Lingenfelter**
226-39 1/15/1985
7.571 ac p.19-1016



LET IT BE KNOWN, THIS MAP HAS BEEN PREPARED AS A REFERENCE GUIDE TO PROPERTY OWNERSHIP. WE BELIEVE THIS INFORMATION TO BE CORRECT AND CURRENT, HOWEVER IT IS NOT INTENDED FOR ANY LEGAL USE, WHETHER IT BE IN SALES, TRANSFERS, TRADES, LEASES OR ANY TYPE, ETC., AND DO NOT ACCEPT RESPONSIBILITY FOR ERRORS OF ANY NATURE OR OMISSIONS CONTAINED HEREIN.

new survey required for next transfer

Last Revision: 9/17/2008

T-13, R-13, Sec.5
Prairie Twp.
Holmes County, Ohio

PR-08

T13, R13, Sec.4 PR-13