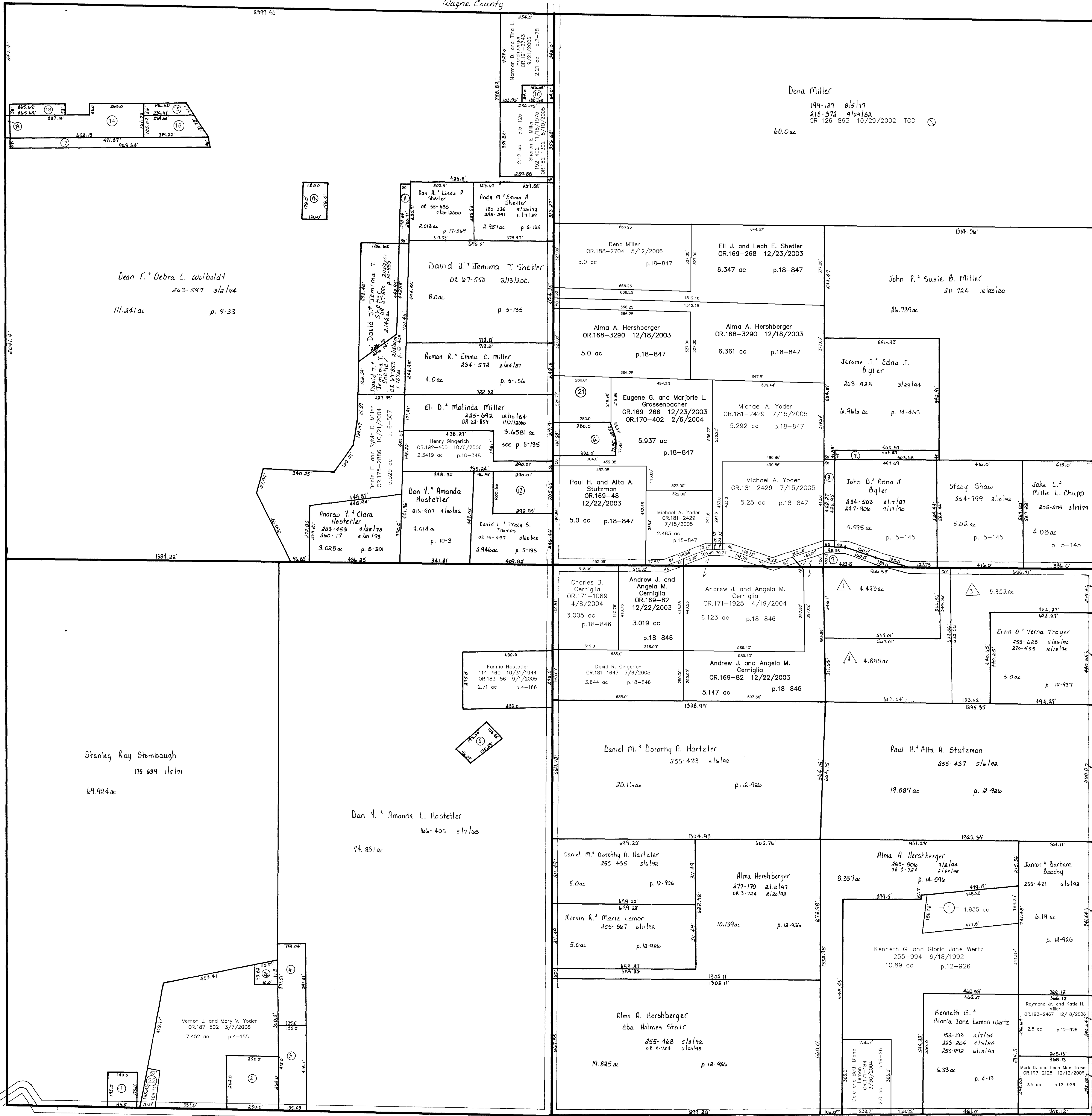


C.H. 245
40' R.L.W

Wayne County



- 1 SHETLER MAHLON AND EMMA
239-513 4/12/1993
0.576 ac p. 3-79
- 2 ALBEN REALTY, LTD.
OR.0097-779 12/28/2001
1.5 ac p. 5-149
- 3 MILLER WILLIAM J. AND ELLA W.
OR.0000-787 11/20/1998
1.291 ac p. 12-415
- 4 MILLER WILLIAM J. AND ELLA
247-73 5/2/1990
1.2135 ac p. 12-415
- 5 HOSTETLER DAN Y. AND AMANDA L.
256-1004 9/3/1996
0.4545 ac p. 10-342
- 6 GROSSENBACHER EUGENE G. AND MARJORIE
206-1 5/25/1997
1.114 ac p. 8-429

- 7 BYLER JOHN D. AND ANNA J.
234-503 3/17/1987
247-906 7/17/1990
0.58 ac p. 5-145
- 8 BYLER JEROME J. AND EDNA J.
263-826 3/23/1994
0.485 ac p. 14-465
- 9 BYLER JOHN D. AND ANNA J.
263-831 3/23/1994
0.485 ac p. 14-465
- 10 SHARON E. MILLER
192-404 11/18/1975
OR.182-1302 8/10/2005
0.29 ac p. 5-125
- 11 WALBOLDT DEAN F. AND DEBRA L.
263-597 3/2/1994
0.321 ac p. 14-353
- 12 TRUSTEES OF THE TEA RUN
(AMISH PAROCHIAL) SCHOOL
208-717 2/15/1980
1.36 ac p. 6-572

- 13 YODER CEMETARY, INC.
202-126 5/26/1978
263-597 3/2/1994
0.485 ac p. 8-205
- 14 HILTY DENNIS E. AND AMY D.
OR.0174-2128 8/20/2004
1.95 ac p. 4-102
- 15 HILTY DENNIS E. AND AMY D.
OR.0174-2128 8/20/2004
0.874 ac p. 9-33
- 16 HILTY DENNIS E. AND AMY D.
OR.0174-2128 8/20/2004
0.284 ac p. 9-104
- 17 HILTY DENNIS E. AND AMY D.
OR.0174-2128 8/20/2004
1.055 ac p. 9-33
- 18 HILTY DENNIS E. AND AMY D.
OR.0174-2128 8/20/2004
0.323 ac p. 9-33

- 19 WALBOLDT DEAN F. AND DEBRA L.
263-597 3/2/1994
0.05 ac p. 9-33
- 20 MILLER WILLIAM J. AND ELLA
OR.0092-420 7/24/2001
0.287 ac p. 18-25
- 21 Terry L. and Beverly L. Rober
OR.187-840 3/13/2006
1.436 ac p. 18-847
- 22 Mahlon J. and Emma M. Shetler
OR.186-2657 2/16/2006
0.281 ac p. 19-635

C.H. 345
40' R.L.W

Sec. 24

Jake Chupp Subdivision
Plat 17-597 Platted 8/9/2000

- 1 CHUPP JASON J. AND ANNA MAE
OR.0058-293 9/8/2000
OR.0105-550 3/4/2002
4.493 ac
- 2 CHUPP JEREMY J. AND CELESTA S.
OR.0058-291 9/8/2000
4.895 ac
- 3 CHUPP JAKE L. AND MILLIE L.
255-626 5/26/1992
5.352 ac

Lemon Subdivision
Plat 19-494 Platted 9/15/2005
Kenneth G. and Gloria Jane Wertz
255-994 6/18/1992
1.835 ac p. 18-484

Last Revision: 12/18/2006

T-14, R-13, Sec. 27
Prairie Township

HOLMES CO. OHIO
SCALE: 1" = 200'

PR-22

LET IT BE KNOWN, THIS MAP HAS BEEN PREPARED AS A REFERENCE GUIDE TO PROPERTY OWNERSHIP. WE BELIEVE THIS INFORMATION TO BE CORRECT AND CURRENT, HOWEVER, IT IS NOT INTENDED FOR ANY LEGAL USE, WHETHER IT BE IN SALES, TRANSFERS, TRADES, LEASES OF ANY TYPE, ETC. AND DO NOT ACCEPT RESPONSIBILITY FOR ERRORS OF ANY NATURE OR OMISSIONS CONTAINED HEREIN.

T.H. 561
Old T.H. 246
NO R.L.W

T.H. 561
Old T.H. 246
40' R.L.W
UNKNOWN