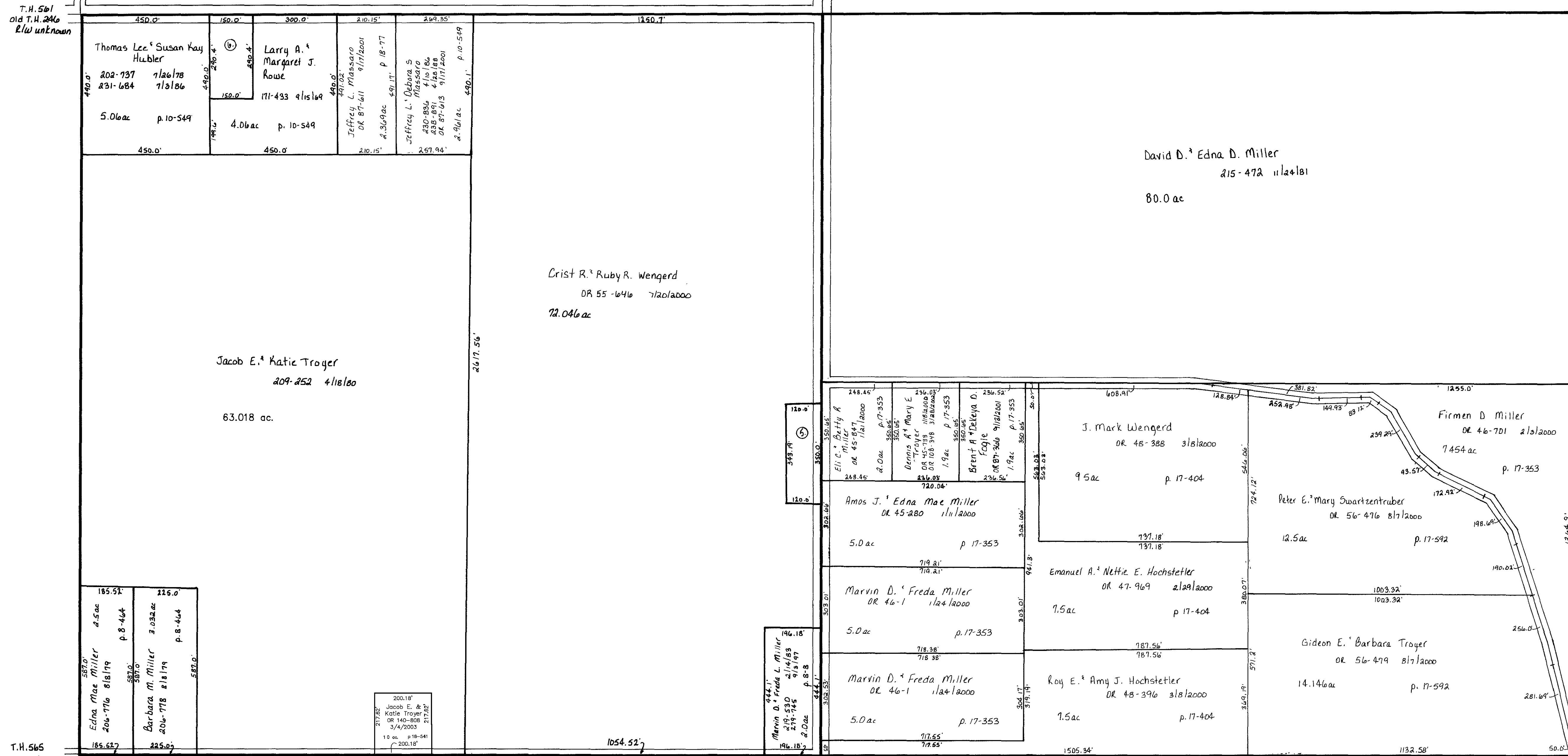


T.H. 564
Old T.H. 246
40' R/W

T.H. 565
Old T.H. 246
40' R/W

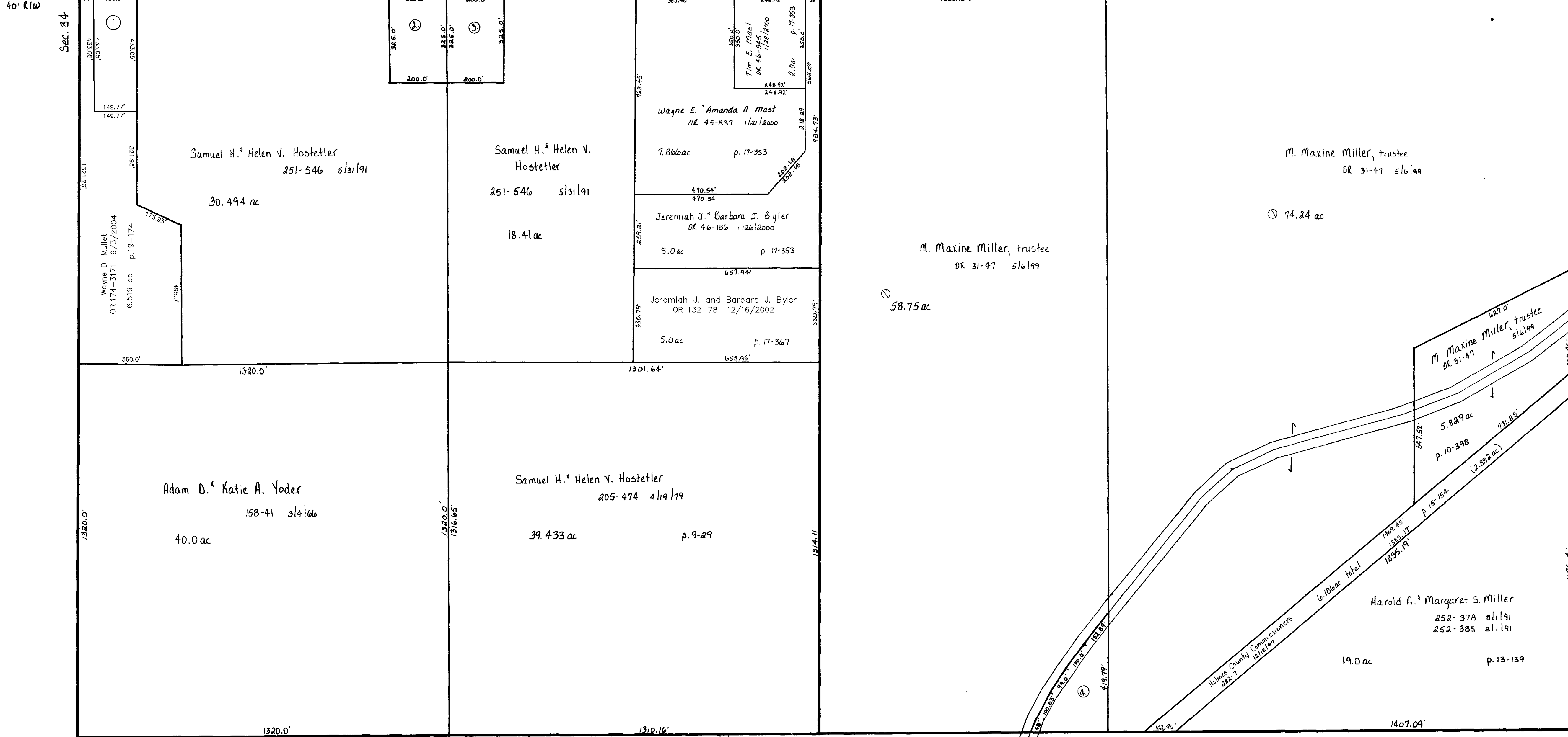
Sec. 26

T.H. 561
Old T.H. 246
40' R/W



T.H. 565
Old T.H. 246
40' R/W

T.H. 567
Old T.H. 249
40' R/W



Sec. 2

C.H. 192
60' R/W

C.H. 192
60' R/W

- 1700207001 HOSTETLER JOHN H. AND RUBY A.
DR 0174-3169 9/3/2004
1.49 ac p. 19-174
- SCHLABACH STEVEN EDWARD AND RUTH ANN
213-85 5/27/1981
228-848 9/23/1985
252-328 7/29/1991
1.49 ac p. 8-746
- HOSTETLER HARRY JR. AND CAROLYN
192-639 12/23/1975
218-902 11/29/1982
1.49 ac p. 7-351
- KLINGERMAN CALVIN H. AND VIRGINIA A.
183-237 3/8/1973
251-690 6/11/1991
1.43 ac p. 12-675
- MILLER ELI C. AND BETTY R.
233-711 5/21/1984
0.954 ac p. 10-253
- ROWE ROBERT L. AND KATIE
202-735 7/25/1978
1.0 ac p. 8-234
- TROGER JACOB E. AND KATIE
DR 0140-808 3/4/2003
1.0 ac p. 18-541

Updated: 10/1/2004
T-14, R-13, Sec. 35
Prairie Township

HOLMES CO. OHIO
SCALE: 1" = 200'

PR-27

LET IT BE KNOWN, THIS MAP HAS BEEN PREPARED AS A REFERENCE GUIDE TO PROPERTY OWNERSHIP. WE BELIEVE THIS INFORMATION TO BE CORRECT AND CURRENT, HOWEVER, IT IS NOT INTENDED FOR ANY LEGAL USE, WHETHER IT BE IN SALES, TRANSFERS, TRADES, LEASES OF ANY TYPE, ETC., AND DO NOT ACCEPT RESPONSIBILITY FOR ERRORS OF ANY NATURE OR OMISSIONS CONTAINED HEREIN.