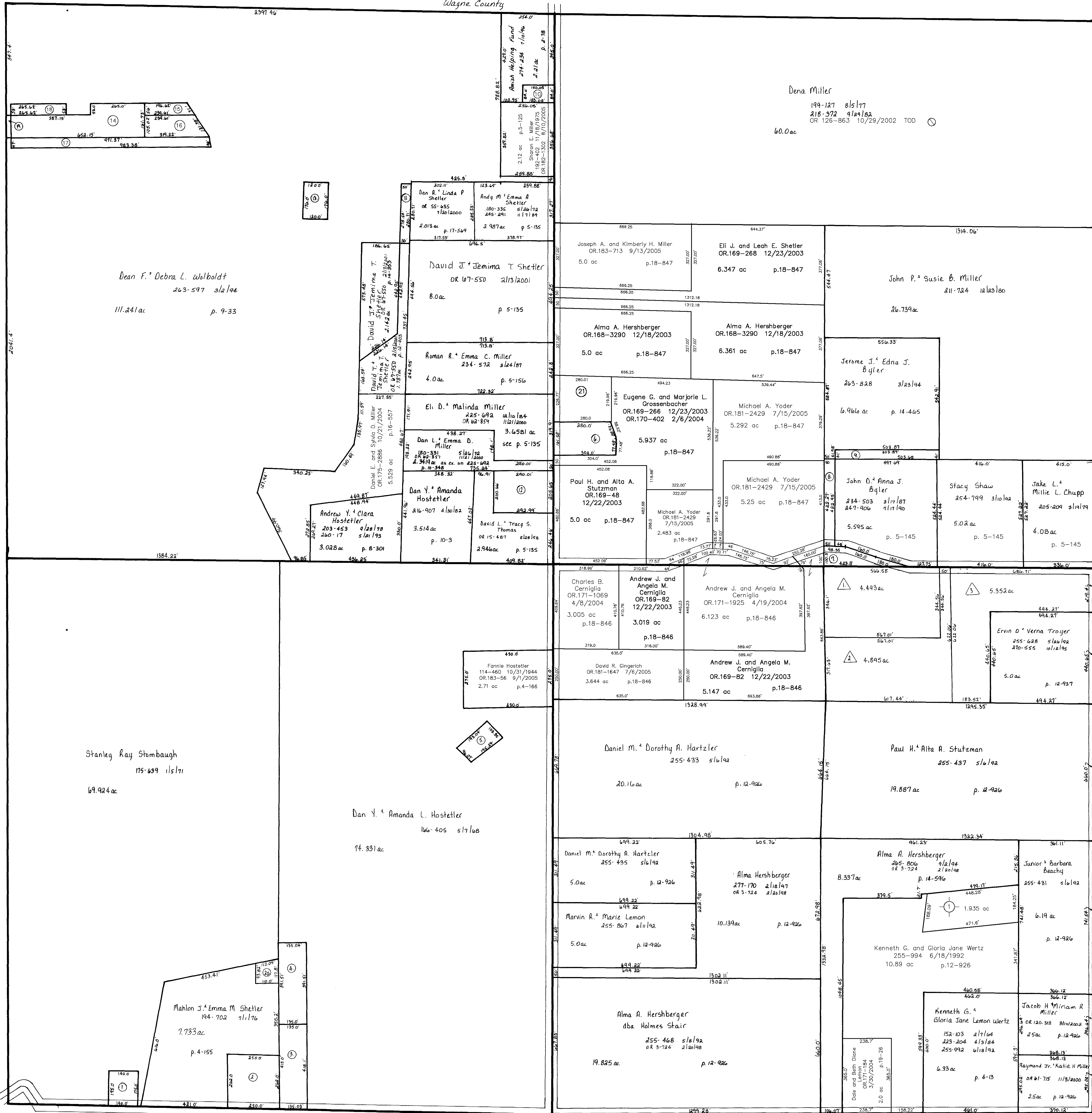


Wayne County  
C.H. 245  
40' R/W



Sec. 27

T.H. 562  
Old T.H. 450  
NO R/W

T.H. 561  
Old T.H. 246  
R/W unknown

- 1 SHETLER MAHLON AND EMMA  
239-513 4/12/1993  
0.576 ac p. 3-79
- 2 ALBEN REALTY, LTD.  
OR.0097-779 12/28/2001  
1.5 ac p. 5-149
- 3 MILLER WILLIAM J. AND ELLA W.  
OR.0000-787 11/20/1998  
1.291 ac p. 12-415
- 4 MILLER WILLIAM J. AND ELLA  
247-73 5/2/1990  
1.2135 ac p. 12-415
- 5 HOSTETLER DAN Y. AND AMANDA L.  
256-1004 9/3/1996  
0.4545 ac p. 10-342
- 6 GROSSENBACHER EUGENE G. AND MARJORIE  
208-1 5/25/1979  
1.114 ac p. 8-429
- 7 BYLER JOHN D. AND ANNA J.  
234-503 3/17/1987  
247-906 7/17/1990  
0.558 ac p. 5-145
- 8 BYLER JEROME J. AND EDNA J.  
263-826 3/23/1994  
0.485 ac p. 14-465
- 9 BYLER JOHN D. AND ANNA J.  
263-831 3/23/1994  
0.485 ac p. 14-465
- 10 SHARON E. MILLER  
192-404 11/18/1975  
OR.182-1302 8/10/2005  
0.29 ac p. 5-125
- 11 WOLBOLDT DEAN F. AND DEBRA L.  
263-597 3/2/1994  
0.321 ac p. 14-353
- 12 TRUSTEES OF THE TEA RUN  
(AMISH PAROCHIAL) SCHOOL  
208-717 2/15/1980  
1.36 ac p. 8-572
- 13 YODER CEMETARY, INC.  
202-126 5/26/1978  
263-597 3/2/1994  
0.485 ac p. 8-205
- 14 HILTY DENNIS E. AND AMY D.  
OR.0174-2128 8/20/2004  
1.95 ac p. 4-102
- 15 HILTY DENNIS E. AND AMY D.  
OR.0174-2128 8/20/2004  
0.284 ac p. 9-104
- 16 HILTY DENNIS E. AND AMY D.  
OR.0174-2128 8/20/2004  
0.574 ac p. 9-33
- 17 HILTY DENNIS E. AND AMY D.  
OR.0174-2128 8/20/2004  
1.055 ac p. 9-33
- 18 HILTY DENNIS E. AND AMY D.  
OR.0174-2128 8/20/2004  
0.323 ac p. 9-33
- 19 WOLBOLDT DEAN F. AND DEBRA L.  
C.H. 345  
40' R/W
- 20 MILLER WILLIAM J. AND ELLA  
OR.0092-420 7/24/2001  
0.267 ac p. 18-25
- 21 QUICK REAL ESTATE, LTD.  
OR.0169-45 12/22/2003  
1.436 ac p. 18-847
- 22 JAKE CHUPP SUBDIVISION  
PLOT 17-597 PLATTED 8/9/2000
- 23 CHUPP JASON J. AND ANNA MAE  
OR.0058-293 9/8/2000  
OR.0105-550 3/4/2002  
4.493 ac
- 24 CHUPP JEREMY J. AND CELESTA S.  
OR.0058-291 9/8/2000  
4.895 ac
- 25 CHUPP JAKE L. AND MILLIE L.  
255-626 5/26/1992  
5.352 ac
- 26 LEMON SUBDIVISION  
PLOT 19-494 PLATTED 9/15/2005
- 27 KENNETH G. AND GLORIA JANE WERTZ  
255-994 6/18/1992  
1.935 ac p. 18-494

Last Revision: 10/4/2005

T-14, R-13, Sec. 27  
Prairie Township

HOLMES CO. OHIO  
SCALE: 1" = 200'

PR-22

LET IT BE KNOWN, THIS MAP HAS BEEN PREPARED AS A REFERENCE GUIDE TO PROPERTY OWNERSHIP. WE BELIEVE THIS INFORMATION TO BE CORRECT AND CURRENT, HOWEVER, IT IS NOT INTENDED FOR ANY LEGAL USE, WHETHER IT BE IN SALES, TRANSFERS, TRADES, LEASES OF ANY TYPE, ETC., AND DO NOT ACCEPT RESPONSIBILITY FOR ERRORS OF ANY NATURE OR OMISSIONS CONTAINED HEREIN.