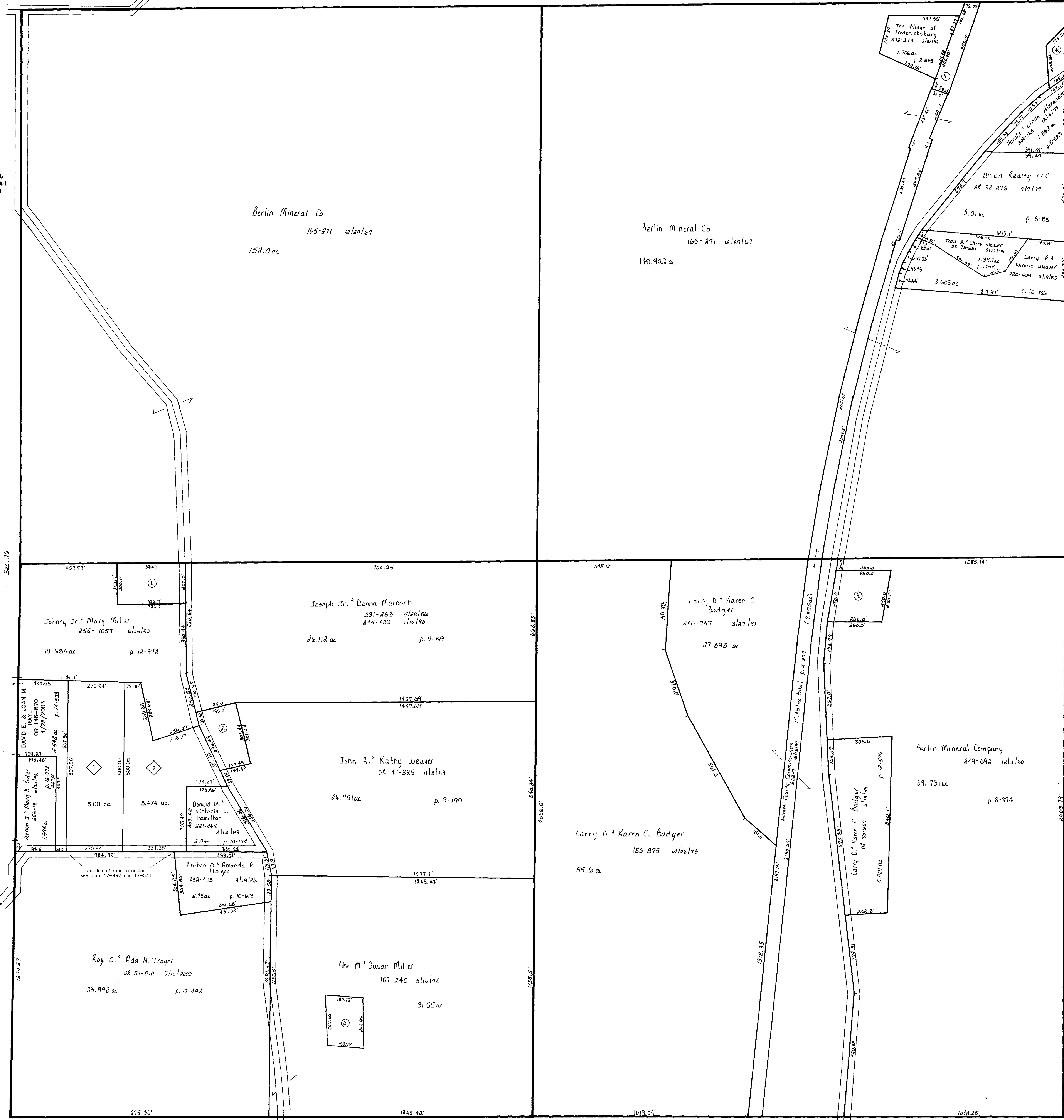


Wayne County

T.H. 563
Old T.H. 250
40' R/W

T.H. 566
Old T.H. 241
60' R/W

C.H. 192
60' R/W



◇ Saw Mill Subdivision PR-33A
P. 18-533 2/25/2003

LET IT BE KNOWN, THIS MAP HAS BEEN PREPARED AS A REFERENCE GUIDE TO PROPERTY OWNERSHIP. WE BELIEVE THIS INFORMATION TO BE CORRECT AND CURRENT, HOWEVER, IT IS NOT INTENDED FOR ANY LEGAL USE, WHETHER IT BE IN SALES, TRANSFERS, TRADES, LEASES OF ANY TYPE, ETC., AND DO NOT ACCEPT RESPONSIBILITY FOR ERRORS OF ANY NATURE OR OMISSIONS CONTAINED HEREIN.

T-14, R-13, Sec. 25
Prairie Township

HOLMES CO. OHIO
SCALE: 1" = 200'

PR-33