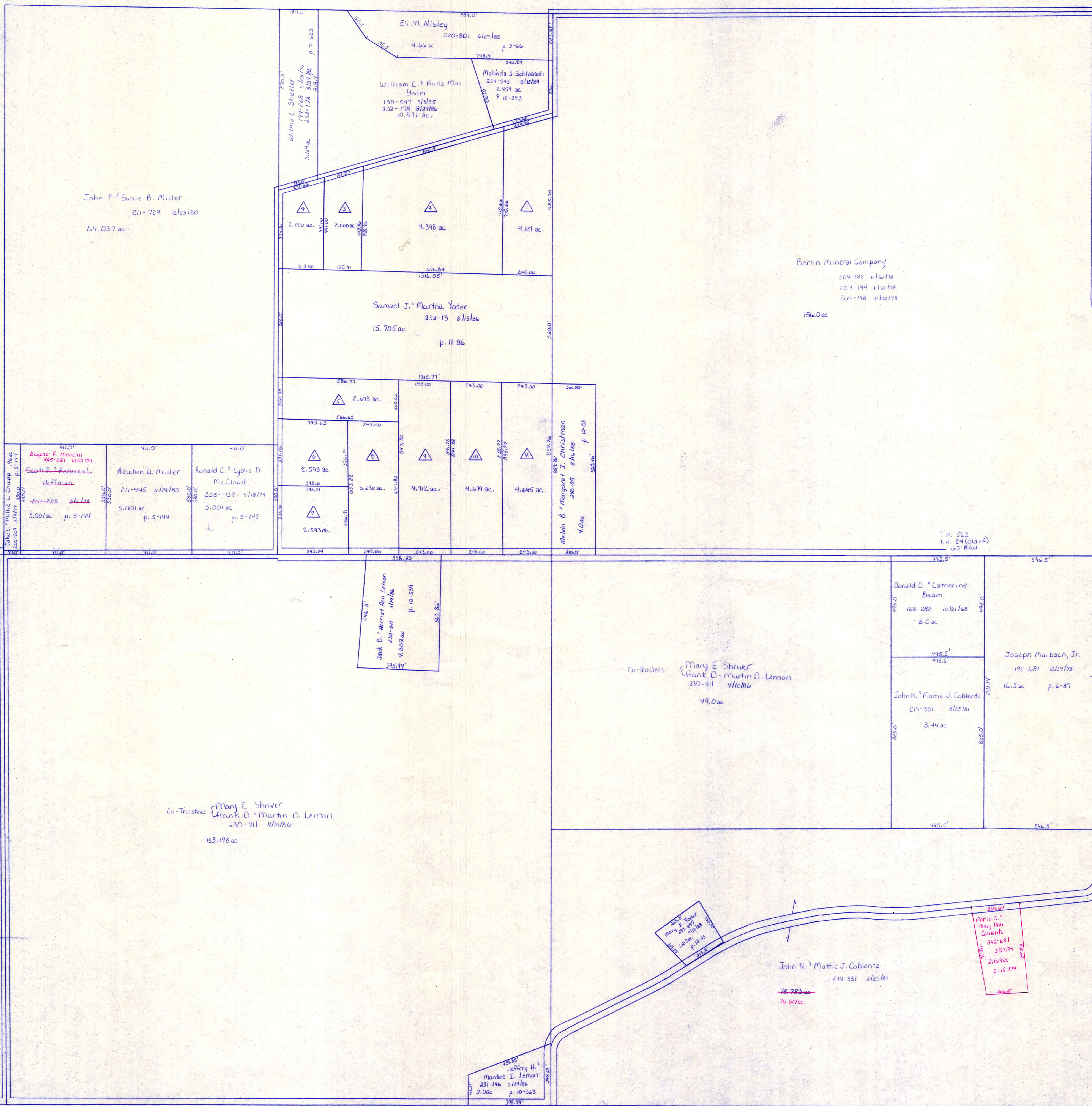


Wayne County

T.H. 563
T.H. 250 (old n^o)
40' R/W

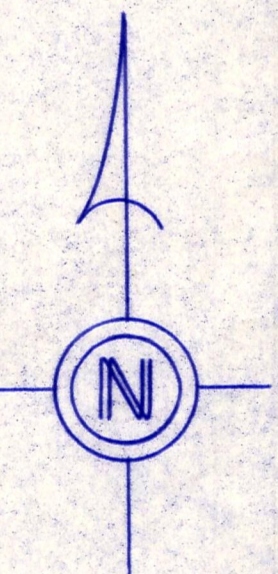


T.H. 566
T.H. 247 (old n^o)
60' R/W

Northview Allotment

- P.V. 2-190 10/22/86
- △ Berlin Mineral Co. 182-544 1/8/13
- △ Michael D. & Cynthia D. Green 234-591 3/26/89
- △ Wilma L. Shetter 233-945 1-6-87
- △ Wilma L. Shetter 233-945 1-6-87
- △ Berlin Mineral Co. 182-544 1/8/13
- △ Berlin Mineral Co. 182-544 1/8/13
- △ Mitchell L. Linda L. Vaughn 244-894 1-6-87
- △ Berlin Mineral Co. 182-544 1/8/13
- △ Robert J. Haster 233-944 1/25/86
- △ Berlin Mineral Co. 182-544 1/8/13
- △ Berlin Mineral Co. 182-544 1/8/13
- △ Berlin Mineral Co. 182-544 1/8/13

T.H. 565
T.H. 246 (old n^o)
No R/W



T-14, R-13, Sec. 26
 PRAIRIE TWP.
 SCALE: 1" = 200'

LET IT BE KNOWN, THIS MAP HAS BEEN PREPARED AS A REFERENCE GUIDE TO PROPERTY OWNERSHIP. WE BELIEVE THIS INFORMATION TO BE CORRECT AND CURRENT, HOWEVER, IT IS NOT INTENDED FOR ANY LEGAL USE, WHETHER IT BE IN SALES, TRANSFERS, TRADES, LEASES OF ANY TYPE, ETC., AND DO NOT ACCEPT RESPONSIBILITY FOR ERRORS OF ANY NATURE OR OMISSIONS CONTAINED HEREIN.

PR-28