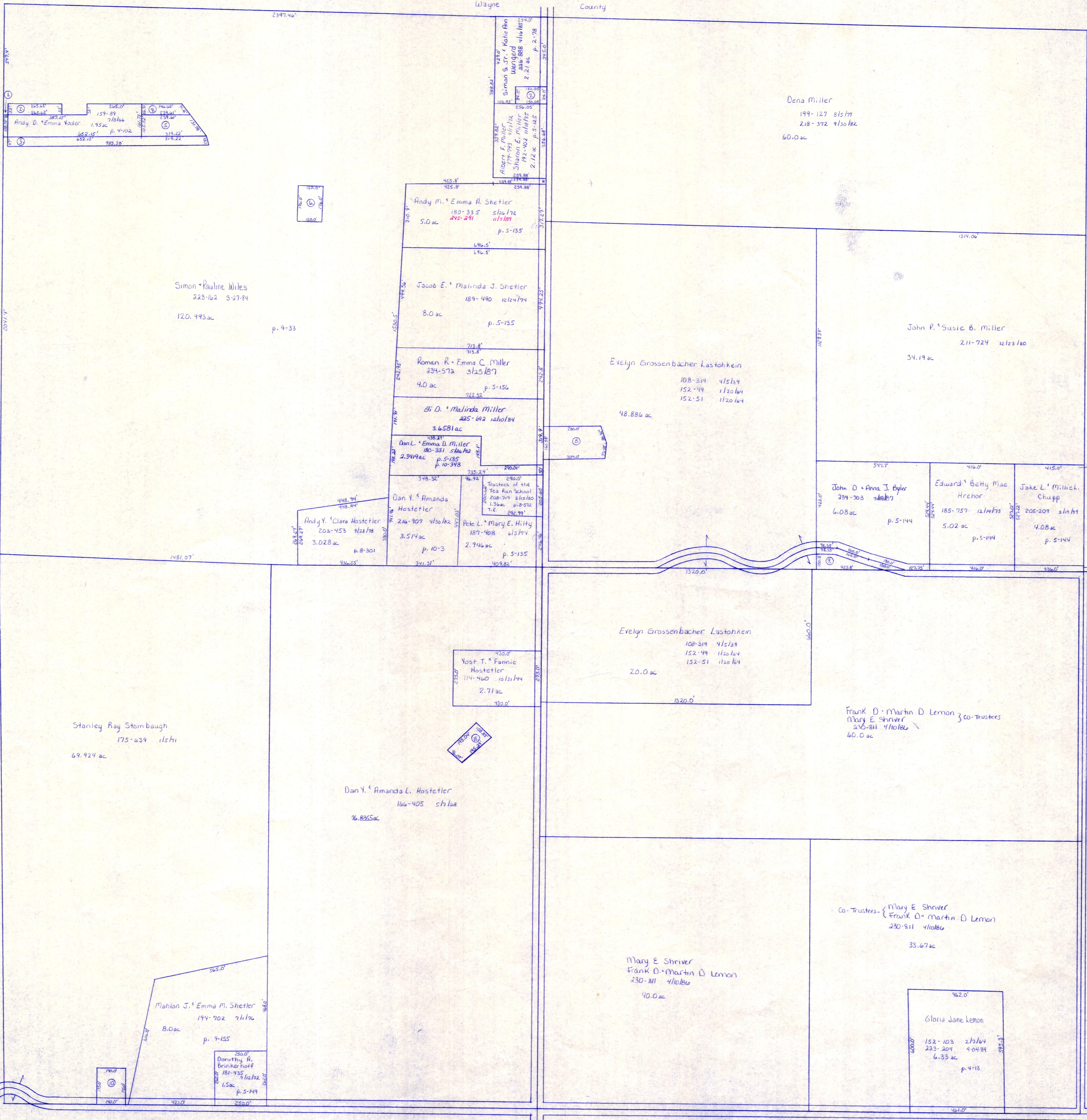


Ch. 245
60' R/W

Wayne County

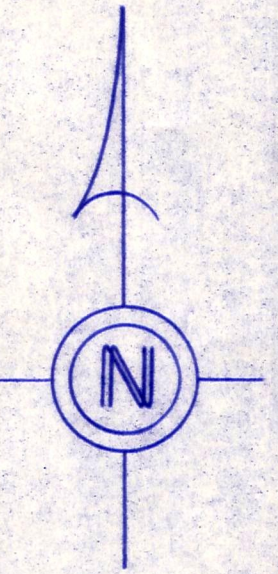


- ① Simon & Pauline Wiles 223-162 3-27-94 .05 ac p. 9-33
- ② Andy D. & Emma Voder 202-755 5/16/79 .323 ac p. 9-33
- ③ Andy D. & Emma Voder 202-755 5/16/79 1.055 ac p. 9-33
- ④ Andy D. & Emma Voder 218-721 9/23/81 .204 ac p. 9-104
- ⑤ Andy D. & Emma Voder 202-755 5/16/79 .679 ac p. 9-33
- ⑥ Yoder Cemetery, Inc. 202-124 5/16/78 .485 ac p. 8-205
- ⑦ Albert F. & Sharon E. Miller 179-795 4/16/72 .27 ac p. 5-1025
- ⑧ Eugene G. & Marjorie Grossenbacher 206-1 5/12/77 1.174 ac p. 8-423
- ⑨ John D. & Anna J. Byler 224-503 5/16/79 .58 ac p. 5-144
- ⑩ Albert S. & Anna L. Nately 150-443 1/20/64 .57 ac p. 3-774
- ⑪ Andrew L. & Laura R. Schlabach 225-638 12/18/84 .454 ac p. 10-342

T.H. 562
T.H. 250 (old n2)
60' x 40' R/W

T.H. 561
T.H. 246 (old n2)
60' R/W

Dec. 34
Ch. 245
60' R/W



T-14, R-13, Sec. 27
 PRAIRIE TWP.
 SCALE: 1" = 200'

LET IT BE KNOWN, THIS MAP HAS BEEN PREPARED AS A REFERENCE GUIDE TO PROPERTY OWNERSHIP. WE BELIEVE THIS INFORMATION TO BE CORRECT AND CURRENT, HOWEVER, IT IS NOT INTENDED FOR ANY LEGAL USE, WHETHER IT BE IN SALES, TRANSFERS, TRADES, LEASES OF ANY TYPE, ETC., AND DO NOT ACCEPT RESPONSIBILITY FOR ERRORS OF ANY NATURE OR OMISSIONS CONTAINED HEREIN.

PR - 22