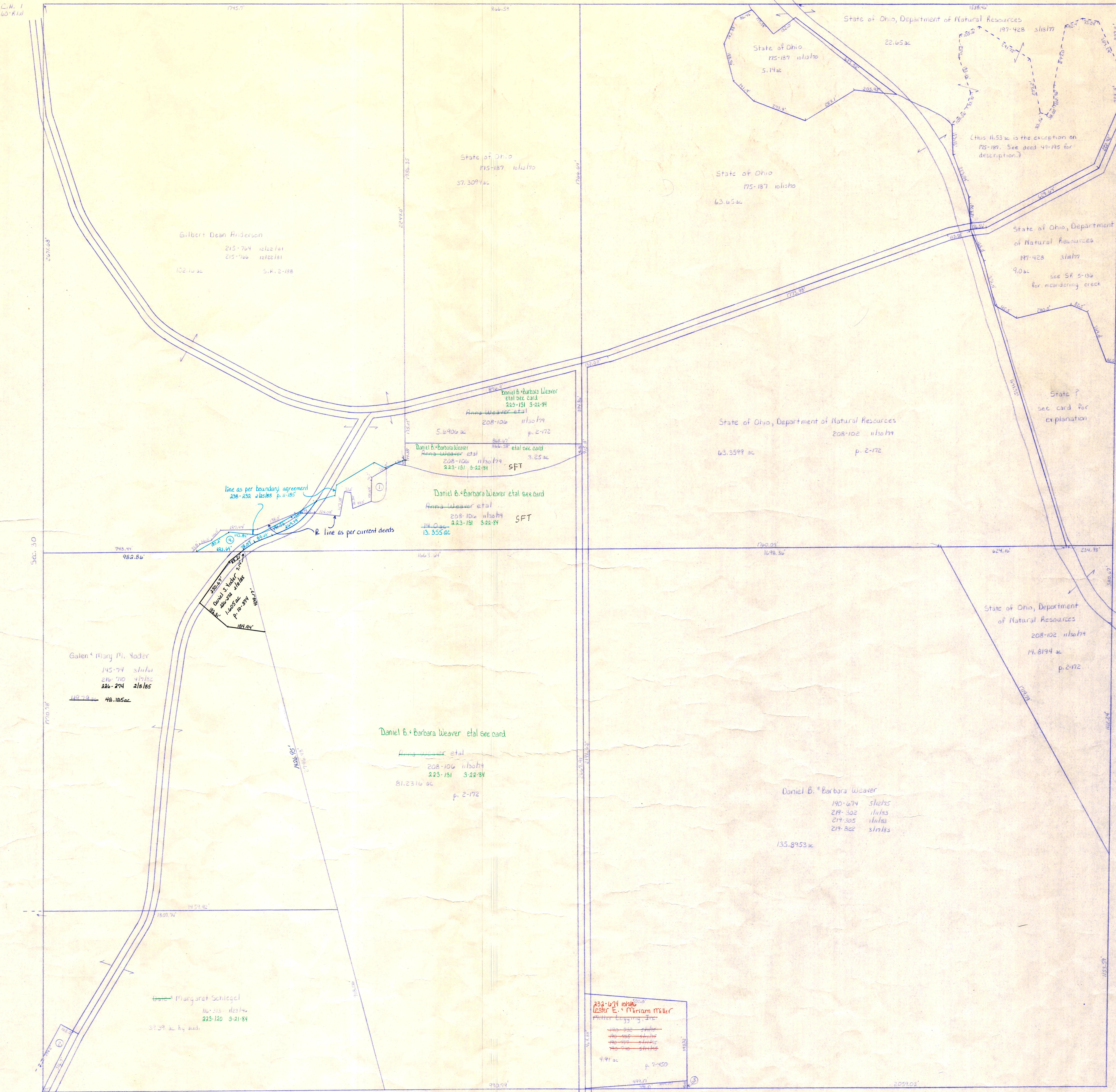


Magick County



- ① Daniel & Barbara Weaver et al see card 233-191 3-22-94
- ② Roy & Fonda Schlegel 159-287 et al see card p. 4-05
- ③ Lester Logging Co. 341-226 et al see card p. 1-1-17  
Roy & Fonda Schlegel 159-287 et al see card p. 4-05  
Lester E. & Miriam Miller 223-293 et al see card p. 1-1-17
- ④ Gilbert Dean Anderson 238-225 et al see card p. 1-1-15

T.H. 553  
T.H. 330 (old n.d.)  
60 R/W

Sec. 32  
T.H. 323  
Old n.d. same  
60 R/W

T-14, R-13, Sec. 29  
PRAIRIE TWP.  
SCALE: 1" = 200'

PR-10