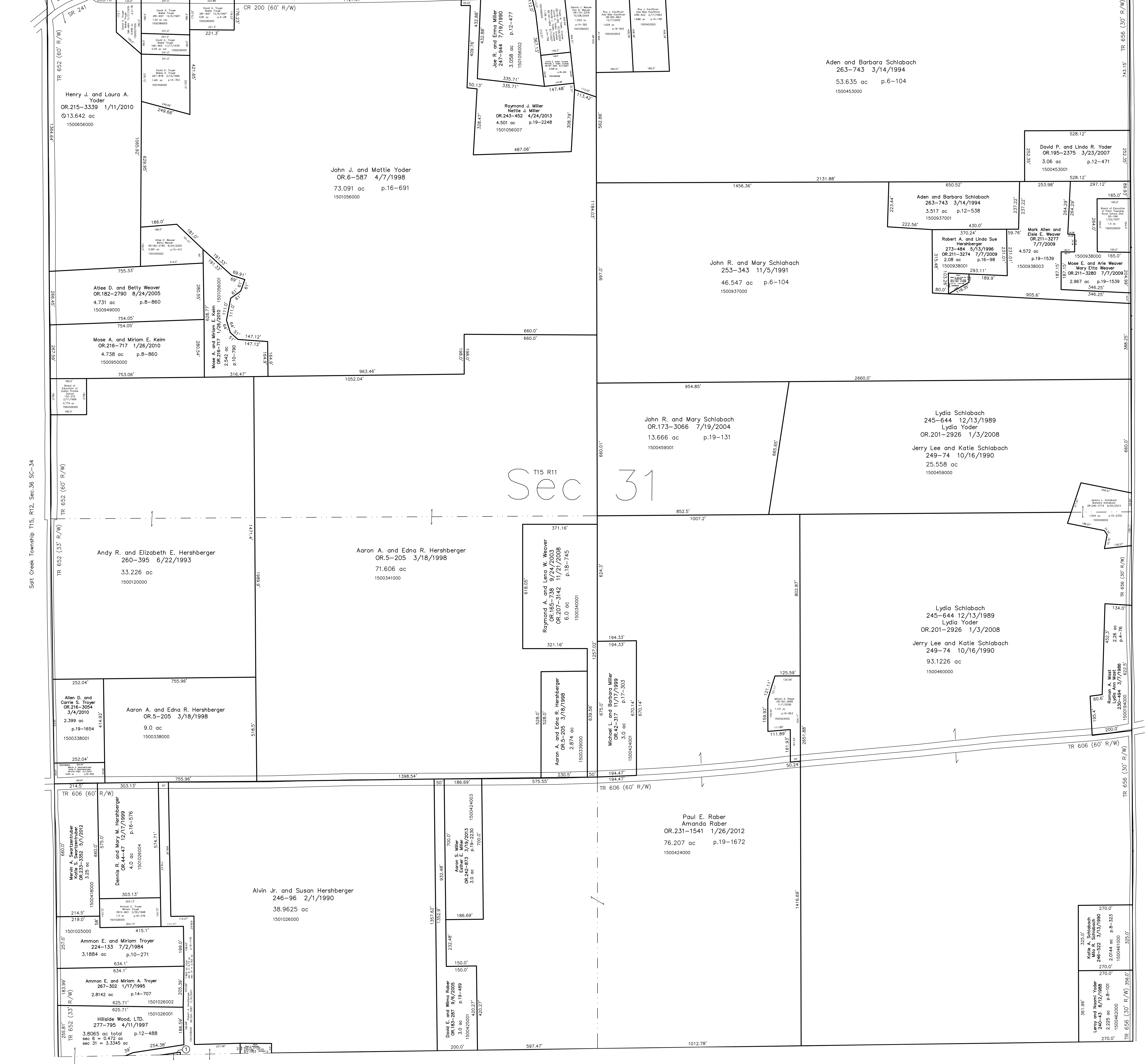
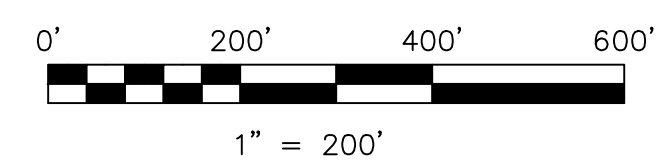


1501028004 Jacob F. Yoder and Anna S. Yoder
OR 228-3033 6/21/2011
0.0114 ac p.14-861



Salt Creek Township T15, R12, Sec.36 SC-34

T15 R11 Sec 31



LET IT BE KNOWN, THIS MAP HAS BEEN PREPARED AS A REFERENCE GUIDE TO PROPERTY OWNERSHIP. WE BELIEVE THIS INFORMATION TO BE CORRECT AND CURRENT, HOWEVER IT IS NOT INTENDED FOR ANY LEGAL USE, WHETHER IT BE IN SALES, TRANSFERS, TRADES, LEASES OF ANY TYPE, ETC., AND DO NOT ACCEPT RESPONSIBILITY FOR ERRORS OF ANY NATURE OR OMISSIONS CONTAINED HEREIN.

new survey required for next transfer

Last Revision: 9/20/2013
T-15, R-11, Sec.31
Paint Twp.
Holmes County, Ohio

P-17