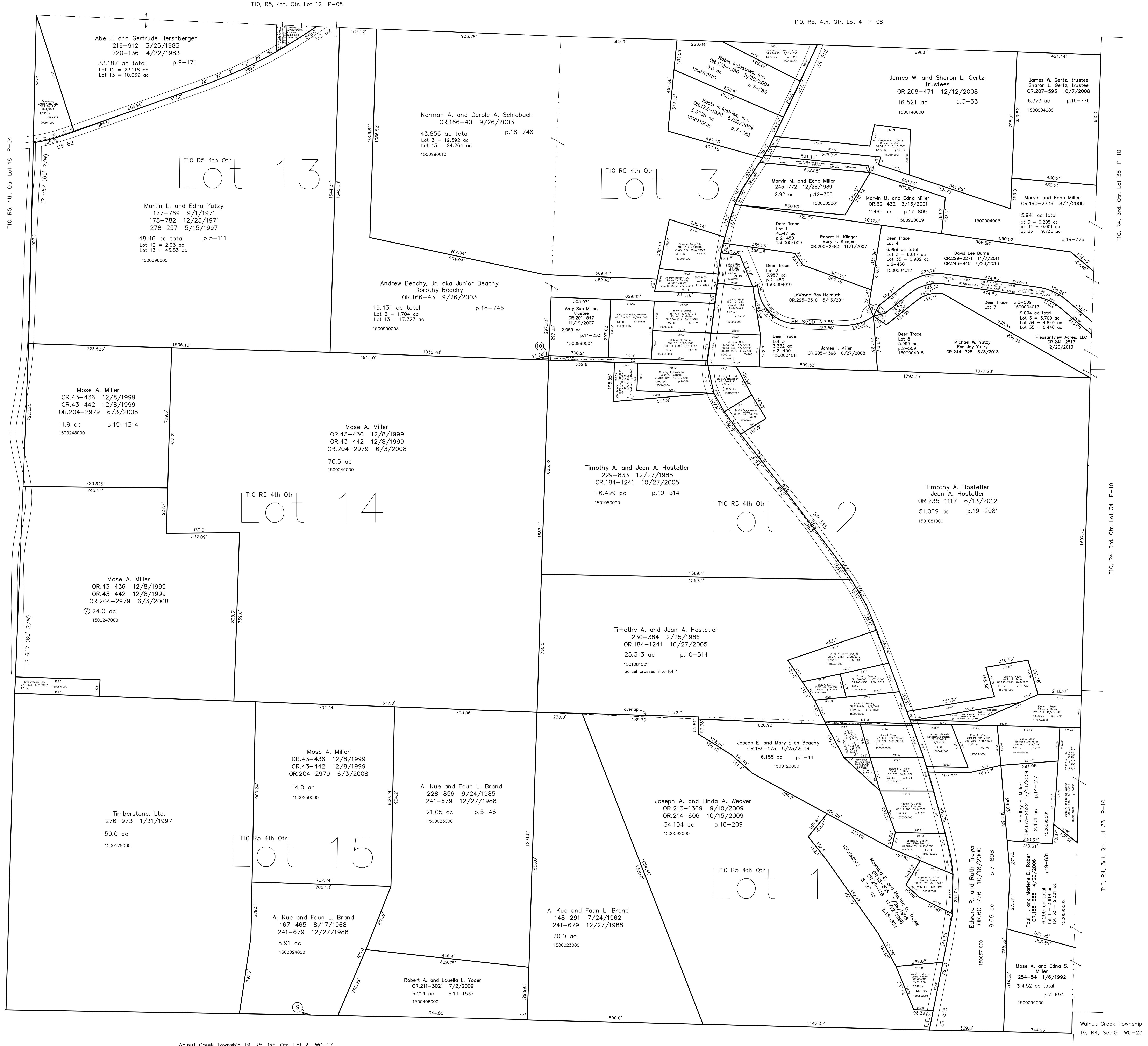


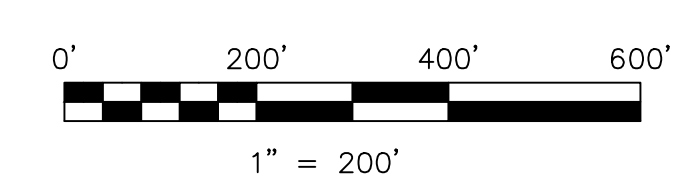
1501107000 (9) Robert A. Yoder and Louella L. Yoder
 OR.211-3021 7/2/2009
 0.005 ac p.19-1537

1500990006 (10) Mose A. Miller
 OR.43-440 12/8/1999
 OR.204-2979 6/3/2008
 0.019 ac p.14-473



Deer Trace Subdivision
 Plat 2-450 Platted 9/18/2007

Deer Trace Subdivision Replat of Lot 5
 Plat 2-509 Platted 10/4/2011



LET IT BE KNOWN, THIS MAP HAS BEEN PREPARED AS A REFERENCE GUIDE TO PROPERTY OWNERSHIP. WE BELIEVE THIS INFORMATION TO BE CORRECT AND CURRENT; HOWEVER IT IS NOT INTENDED FOR ANY LEGAL USE, WHETHER IT BE IN SALES, TRANSFERS, TRADES, LEASES OF ANY TYPE, ETC., AND DO NOT ACCEPT RESPONSIBILITY FOR ERRORS OF ANY NATURE OR OMISSIONS CONTAINED HEREIN.

new survey required for next transfer

Last Revision: 7/31/2013
T-10, R-5, 4th. Qtr.
Lots 1,2,3,13,14,15
Paint Twp.
Holmes County, Ohio

P-07

Walnut Creek Township
 T9, R5, 1st. Qtr. Lot 3 WC-11

Walnut Creek Township T9, R5, 1st. Qtr. Lot 2 WC-17

Walnut Creek Township T9, R5, 1st. Qtr. Lot 1 WC-17

Walnut Creek Township
 T9, R4, Sec.5 WC-23