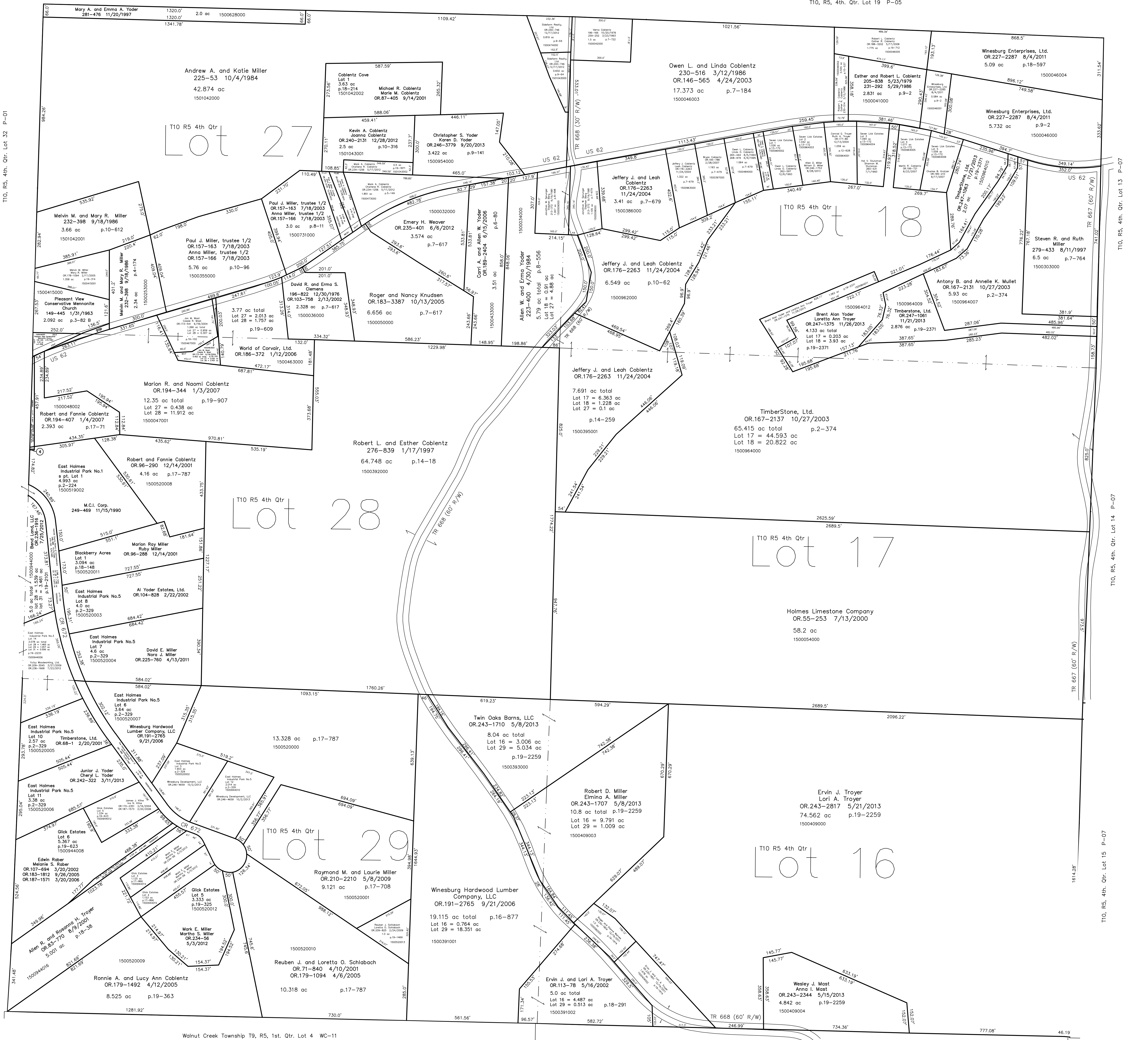
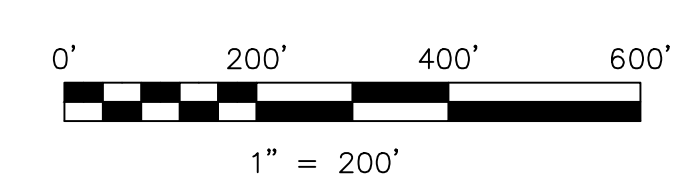


1500519003 Fannie Swartzentruber, trustee
OR 215-1887 12/18/2009
0.008 ac p.12-589
north part of lot 1
East Holmes Industrial Park No.1



- Blackberry Acres Subdivision
Plat 18-148 Platted 12/12/2001
- Coblenz Cove
Plat 18-214 Platted 2/26/2002
- East Holmes Industrial Park Allotment No.1
Plat 2-224 Platted 11/14/1990
- East Holmes Industrial Park Allotment No.3 Replat of Lot 3 and Additional Lands
Plat 19-2233 Platted 3/22/2013
- East Holmes Industrial Park Allotment No.5
Plat 2-329 Platted 2/15/2001
- Click Estates
Plat 17-866 Platted 5/8/2001
- Click Estates First Addition
Plat 19-325 Platted 3/8/2005
- Click Estates Second Addition
Plat 19-623 Platted 2/3/2006
- Seven Lick Estates
Plat 13-172 Platted 10/16/1992



LET IT BE KNOWN, THIS MAP HAS BEEN PREPARED AS A REFERENCE GUIDE TO PROPERTY OWNERSHIP. WE BELIEVE THIS INFORMATION TO BE CORRECT AND CURRENT; HOWEVER, IT IS NOT INTENDED FOR ANY LEGAL USE, WHETHER IT BE IN SALES, TRANSFERS, TRADES, LEASES OR ANY TYPE, ETC., AND DO NOT ACCEPT RESPONSIBILITY FOR ERRORS OF ANY NATURE OR OMISSIONS CONTAINED HEREIN.

new survey required for next transfer

Last Revision: 11/26/2013
T-10, R-5, 4th. Qtr.
Lots 16,17,18,27,28,29
Paint Twp.
Holmes County, Ohio

P-04