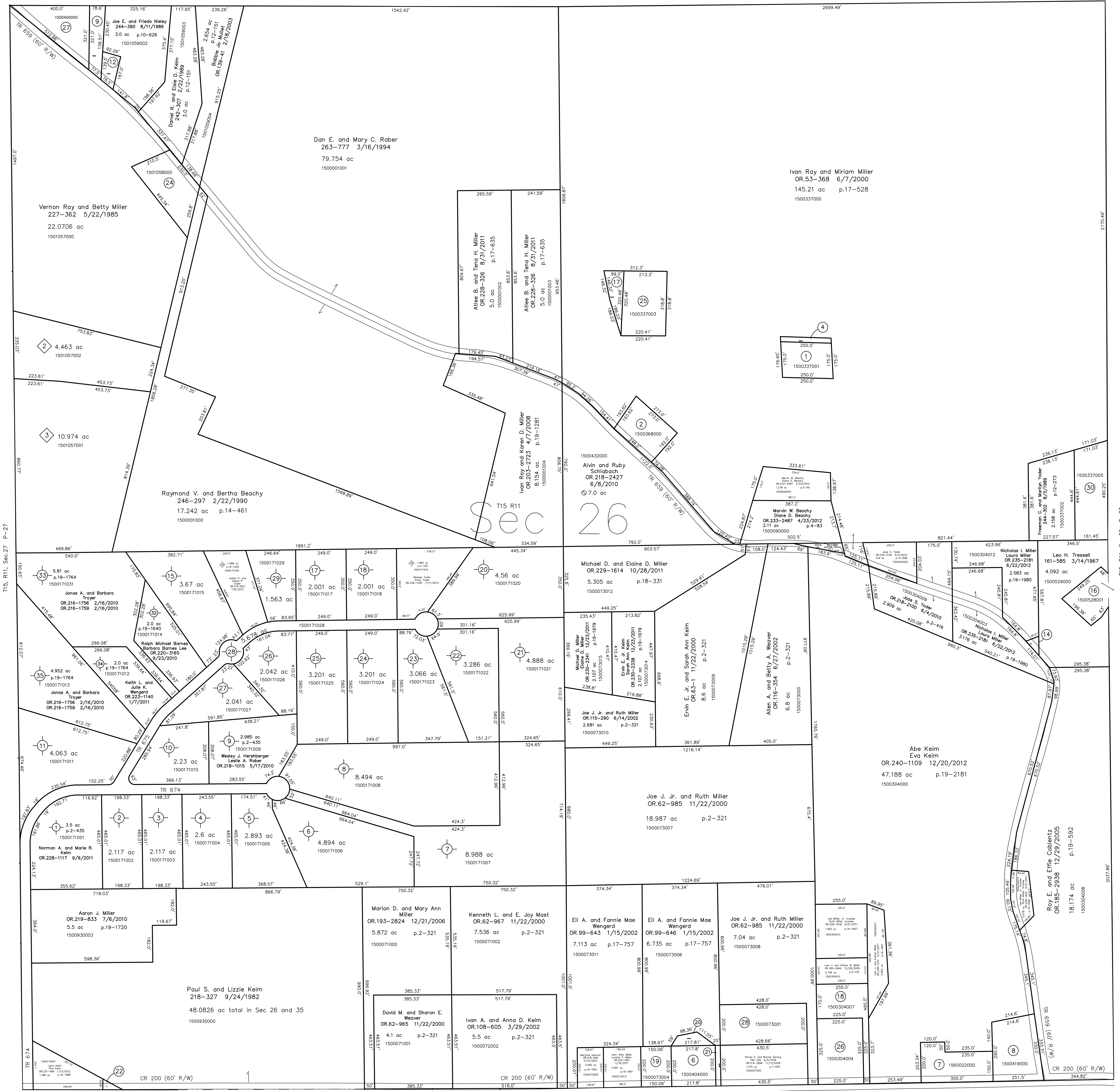


- 1500171002 ② New Morgan Holdings, Ltd.
 OR.211-244 5/29/2009
 2.117 ac p.2-435
- 1500171003 ③ New Morgan Holdings, Ltd.
 OR.211-244 5/29/2009
 2.117 ac p.2-435
- 1500171004 ④ New Morgan Holdings, Ltd.
 OR.211-244 5/29/2009
 2.8 ac p.2-435
- 1500171005 ⑤ Larry and Rita Keim
 OR.198-1331 7/18/2007
 2.893 ac p.2-435
- 1500171006 ⑥ Larry and Rita Keim
 OR.198-1331 7/18/2007
 4.894 ac p.2-435
- 1500171007 ⑦ Edwin E. and Susan Miller
 OR.198-1971 7/24/2007
 8.988 ac p.2-435
- 1500171008 ⑧ New Morgan Holdings, Ltd.
 OR.211-244 5/29/2009
 8.494 ac p.2-435
- ⑨ see map
- 1500171010 ⑩ Daniela M. and Karen J. Palmer
 OR.198-1615 7/20/2007
 2.23 ac p.2-435
- 1500171011 ⑪ David E. and Ruth E. Miller
 OR.198-1618 7/20/2007
 4.063 ac p.2-435
- ⑫ see map
- ⑬ void replatted
- ⑭ void replatted
- 1500171015 ⑮ James D. and Ruth A. Mullet
 OR.198-1409 7/18/2007
 3.67 ac p.2-435
- 1500171017 ⑰ Paul J. and John J. Yoder
 OR.204-2552 5/27/2008
 2.001 ac p.2-435
- 1500171018 ⑱ Clifford W. Sprang and Melissa F. Miller
 OR.198-1338 7/18/2007
 2.001 ac p.2-435
- ⑲ see map
- 1500171020 ⑳ Daniel L. and Frieda Mast
 OR.198-1307 7/17/2007
 4.56 ac p.2-435
- 1500171021 ㉑ Vernon E. and Elias L. Yoder
 OR.214-690 10/16/2009
 4.888 ac p.2-435
- 1500171022 ㉒ New Morgan Holdings, Ltd.
 OR.211-244 5/29/2009
 3.286 ac p.2-435
- 1500171023 ㉓ New Morgan Holdings, Ltd.
 OR.211-244 5/29/2009
 3.086 ac p.2-435
- 1500171024 ㉔ New Morgan Holdings, Ltd.
 OR.211-244 5/29/2009
 3.201 ac p.2-435
- 1500171025 ㉕ New Morgan Holdings, Ltd.
 OR.211-244 5/29/2009
 3.201 ac p.2-435
- 1500171026 ㉖ Matthew L. and Holly C. Johnson
 OR.198-1627 7/23/2007
 2.042 ac p.2-435
- 1500171027 ㉗ Jonathan L. and Tammy L. Troyer
 OR.198-1983 7/24/2007
 2.041 ac p.2-435
- 1500171028 ㉘ The Board of Commissioners of Holmes County, Ohio
 OR.198-232 8/17/2007
 dedication of TR 674 and TR 675 (res.#09-10-07-1)
 OR.200-353 10/5/2007 and p.19-1155
 5.678 ac p.2-435
- 1500171029 ㉙ Cornerstone Homes of Winesburg, Inc.
 OR.198-2516 7/23/2007
 1.563 ac p.19-1005
- ⑳ see map

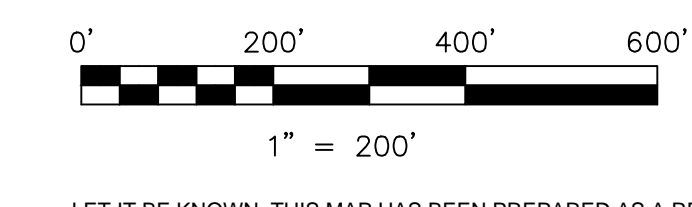
- Crab Apple North Subdivision Replat of Lots 13 & 14
 Plat 19-1640 Platted 2/2/2010
- Crab Apple North Subdivision Replat of Lots 12 & 31
 Plat 19-1764 Platted 11/9/2010

- Rabbit Run Subdivision Replat of Lot 1
 Plat 2-398 Platted 6/29/2005
- 1500570002 ① James L. and Joanna Miller
 OR.182-1598 8/15/2005
 4.463 ac p.2-398
- 1500570001 ② Vernon Ray and Betty Miller
 OR.182-1595 8/15/2005
 10.974 ac p.2-398



- 1500337001 ① Duane R. and Marlene Miller
 231-365 6/5/1986
 1.003 ac p.10-569
- 1500368000 ② Roy L. and Sue Miller
 193-579 3/31/1978
 241-170 11/7/1988
 1.1482 ac p.7-590
- 1500337006 ④ Duane R. and Marlene Miller
 OR.174-131 8/9/2004
 0.143 ac p.18-146
- 1500440000 ⑥ Brenda S. Oswald
 207-1 8/10/1979
 228-842 9/24/1985
 1.0 ac p.8-467
- 1560022000 ⑦ Trustees of the West Bellder Amiah Parochial School
 178-170 10/1/1971
 1.36 ac p.5-97
- 1500419000 ⑧ Allen L. and Linda R. Mast
 OR.203-502 3/11/2008
 1.649 ac p.4-117
- 1501059001 ⑨ Joe E. and Frieda Nisley
 232-340 9/1/1986
 0.5561 ac p.10-606
- 1500340003 ⑪ Joe Jr. and Ruth Miller
 OR.43-723 12/13/1999
 0.639 ac p.12-885
- 1501059000 ⑬ Lizzie J. Helmut, trustee
 281-810 12/12/1997
 0.276 ac p.10-606
- 1500340006 ⑭ Leo Tressell
 267-863 3/13/1995
 267-867 3/13/1995
 0.069 ac p.14-760
- 1500528001 ⑯ David J. and Lori E. Cappillo
 267-869 3/13/1995
 0.873 ac p.14-761
- 1500337004 ⑰ Aden R. and Laura Miller
 OR.33-504 6/17/1999
 0.395 ac p.17-139
- 1500340007 ⑱ Ivan J. and Esther W. Miller
 OR.54-744 7/3/2000
 1.219 ac p.17-346
- 1500073004 ⑲ Timothy Ray and Jacqueline Weaver
 OR.60-291 10/12/2000
 0.689 ac p.17-658
- 1500073002 ⑳ Brenda S. Hostetter fka Oswald
 OR.60-288 10/12/2000
 0.217 ac p.17-658

- 1500073003 ㉑ Brenda S. Hostetter fka Oswald
 OR.60-288 10/12/2000
 0.115 ac p.17-658
- 1500170002 ㉒ Paul S. and Lizzie Keim
 OR.181-810 12/12/1997
 0.062 ac p.19-739
- 1501058000 ㉔ Lizzie J. Helmut, trustee
 281-810 12/12/1997
 1.5985 ac p.10-415
- 1500337003 ㉓ Aden R. and Laura Miller
 268-712 5/25/1995
 1.591 ac p.14-810
- 1500340004 ㉖ Ivan J. and Esther W. Miller
 261-801 10/7/1993
 1.679 ac p.14-315
- 1500400000 ㉗ Joe E. and Frieda J. Nisley
 209-813 6/27/1980
 230-862 4/15/1986
 1.474 ac p.8-618
- 1500073001 ㉘ Randy S. and Bonnie Sprang
 OR.60-286 10/12/2000
 1.967 ac p.17-658
- 1500337005 ㉙ Freeman C. and Marilyn Yoder
 OR.53-365 6/7/2000
 1.75 ac p.17-528



LET IT BE KNOWN, THIS MAP HAS BEEN PREPARED AS A REFERENCE GUIDE TO PROPERTY OWNERSHIP. WE BELIEVE THIS INFORMATION TO BE CORRECT AND CURRENT, HOWEVER IT IS NOT INTENDED FOR ANY LEGAL USE, WHETHER IT BE IN SALES, TRANSFERS, TRADES, LEASES OF ANY TYPE, ETC., AND DO NOT ACCEPT RESPONSIBILITY FOR ERRORS OF ANY NATURE OR OMISSIONS CONTAINED HEREIN.

new survey required
 for next transfer

Last Revision: 12/20/2012
T-15, R-11, Sec.26
Paint Twp.
Holmes County, Ohio

P-30

T-15, R-11, Sec.25 P-33