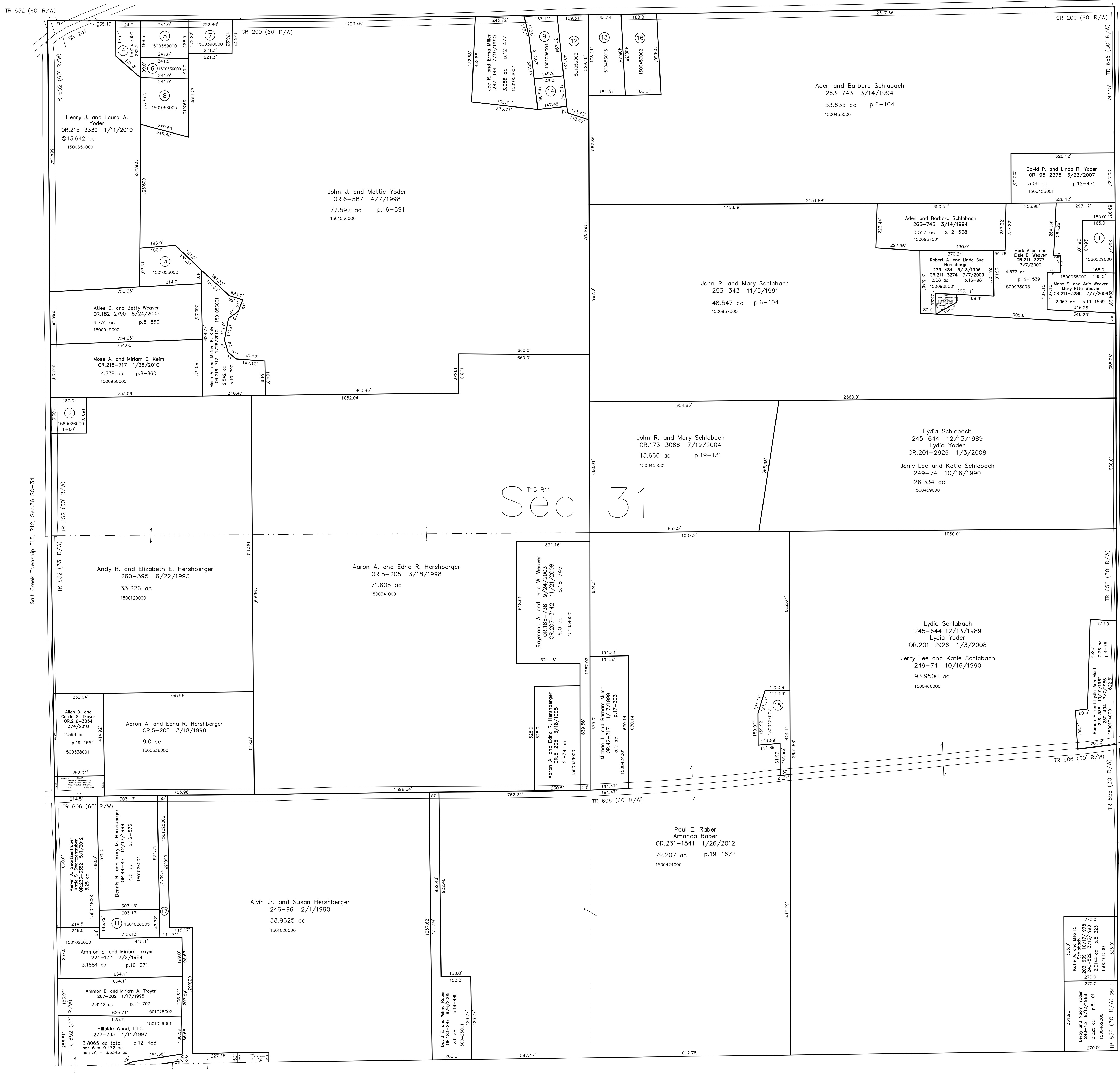


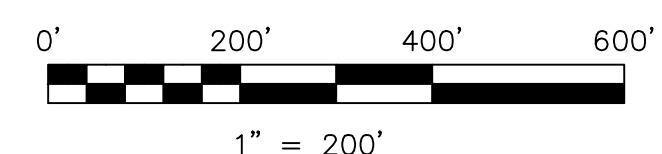
- 1560029000 ① Board of Education of Paint Township Rural School Dist.
90-346 1/22/1937
1.0 ac
- 1560026000 ② Board of Education of Dublin Private School
132-215 2/11/1956
0.774 ac
- 1501055000 ③ Althea D. and Betty Weaver
OR.182-2790 8/24/2005
0.961 ac p.10-415
- 1500537000 ④ David A. and Mabel Troyer
198-464 11/17/1976
0.648 ac p.2-78
- 1500389000 ⑤ David A. and Mabel Troyer
281-697 12/4/1997
1.04 ac ad.
- 1500536000 ⑥ David A. and Mabel Troyer
198-464 11/17/1976
0.55 ac
- 1500390000 ⑦ David A. and Mabel Troyer
281-697 12/4/1997
0.81 ac p.4-58
- 1501056000 ⑧ David A. and Mabel A. Troyer
267-878 3/14/1995
1.461 ac p.14-763
- 1501056004 ⑨ Curtis E. Yoder, trustee
Rhonda J. Yoder, trustee
OR.197-1954 6/7/2007
Frieda N. Yoder, trustee
OR.176-165 10/29/2004
1.106 ac p.14-756
- 1501028004 ⑩ Jacob F. and Anna S. Yoder
OR.226-3033 6/21/2011
0.0114 ac p.14-861
- 1501028005 ⑪ Ammon E. and Miriam Troyer
OR.5-963 3/30/1998
1.0 ac p.16-576
- 1501056003 ⑫ Dennis J. and Ella N. Weaver
OR.175-3318 10/28/2004
1.532 ac p.14-352
- 1500453003 ⑬ Roy J. and Ada Mae Kauffman
OR.188-863 12/7/2005
1.629 ac p.19-563
- 1501056006 ⑭ Curtis E. Yoder, trustee
Rhonda J. Yoder, trustee
OR.197-1954 6/7/2007
0.528 ac p.18-205
- 1500424002 ⑮ Miriam E. Rober
OR.192-2689 11/1/2006
1.137 ac p.19-853
- 1500453002 ⑯ Roy J. and Ada Mae Kauffman
258-922 2/17/1993
1.686 ac p.14-148
- 1501028009 ⑰ Robert A. Hershberger
OR.200-3087 11/9/2007
2.163 ac p.19-1178
- 1501028010 ⑱ Robert A. Hershberger
OR.240-434 12/14/2012
0.176 ac p.19-2176

T15, R11, Sec.30 P-18



T15 R11
Sec 31

T14, R11, Sec.7 P-16



LET IT BE KNOWN, THIS MAP HAS BEEN PREPARED AS A REFERENCE GUIDE TO PROPERTY OWNERSHIP. WE BELIEVE THIS INFORMATION TO BE CORRECT AND CURRENT, HOWEVER IT IS NOT INTENDED FOR ANY LEGAL USE, WHETHER IT BE IN SALES, TRANSFERS, TRADES, LEASES OF ANY TYPE, ETC., AND DO NOT ACCEPT RESPONSIBILITY FOR ERRORS OF ANY NATURE OR OMISSIONS CONTAINED HEREIN.

new survey required for next transfer

Last Revision: 12/14/2012
T-15, R-11, Sec.31
Paint Twp.
Holmes County, Ohio

P-17

T15, R11, Sec.32 P-20