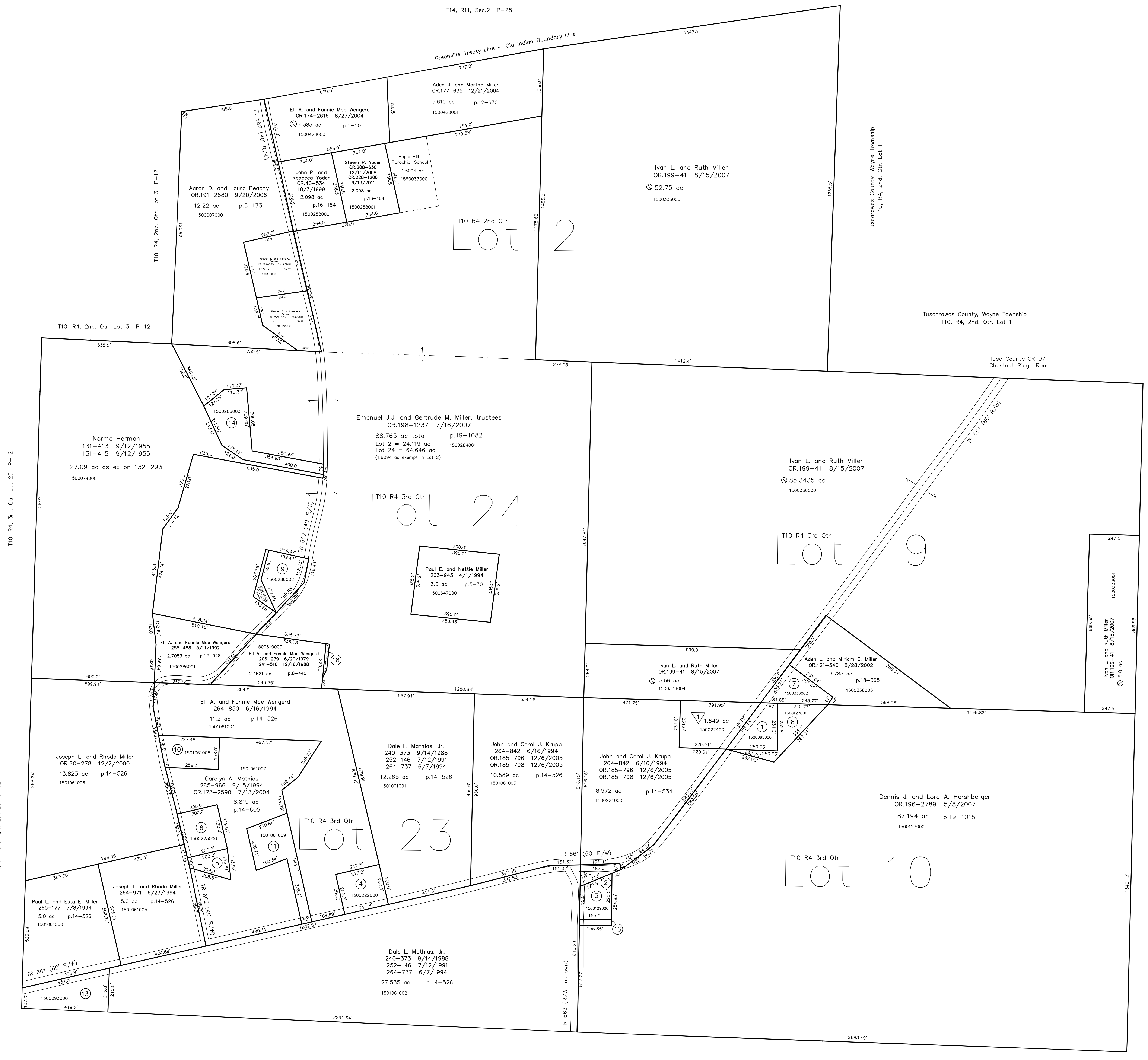
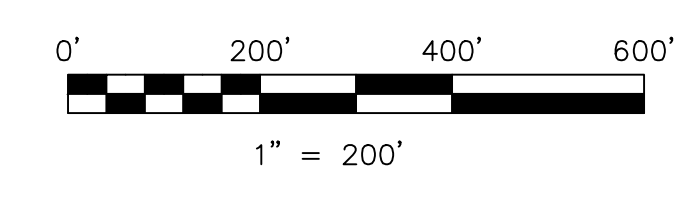


- 150065000 (1) John J. and Ruth R. Yoder  
243-457 5/23/1989  
262-168 11/3/1993  
OR.103-885 7/14/2002  
0.9 ac p.7-114
- 150010000 (2) Dennis J. and Lora A. Hershberger  
236-405 9/8/1987  
0.3 ac p.3-548
- 1500109000 (3) Dennis J. and Lora A. Hershberger  
236-405 9/8/1987  
0.68 ac p.3-98
- 1500222000 (4) George E. III and Beth A. Richards  
OR.188-1318 4/26/2006  
1.0 ac p.8-459
- 1501060000 (5) Carolyn A. Mathias  
227-707 6/14/1985  
OR.173-2590 7/13/2004  
0.4551 ac p.10-424
- 1500223000 (6) Carolyn A. Mathias  
227-119 9/18/1992  
OR.173-2590 7/13/2004  
1.01 ac p.8-188
- 1500336000 (7) John J. and Ruth Yoder  
243-460 5/23/1989  
0.8715 ac p.12-218
- 1500127001 (8) John J. and Ruth Yoder  
243-457 5/23/1989  
0.925 ac p.12-217
- 1500228000 (9) Norman J. and Karen Ann Troyer, co-trustees  
281-515 11/24/1997  
1.001 ac p.14-571
- 1501061008 (10) Glenn R. Parks  
266-943 12/13/1994  
OR.87-52 8/28/2001  
1.0 ac p.14-861
- 1501061009 (11) Robert W. Jr. and Susanna E. Hippert  
OR.110-436 4/19/2002  
1.381 ac p.18-262
- 1500093000 (12) Duane P. and Naomi S. Miller  
OR.215-1084 12/8/2009  
1.558 ac p. 3-56
- 1500286003 (13) David E. Miller and Loretta Schlabach  
276-500 12/17/1998  
1.674 ac p.16-308
- 1500127002 (14) Dennis J. and Lora A. Hershberger  
OR.196-2787 5/8/2007  
0.107 ac p.19-1015
- 1500284002 (15) Eli A. and Fannie Mae Wengert  
OR.218-2031 6/2/2010  
0.055 ac p.19-1704



Duvall Acres Allotment No. 1  
 Plat 15-12 Platted 9/7/1993  
 1500224001 John J. and Ruth R. Yoder  
 265-405 7/29/1994  
 OR.103-885 7/14/2002  
 1.649 ac p.15-12



LET IT BE KNOWN, THIS MAP HAS BEEN PREPARED AS A REFERENCE  
 GUIDE TO PROPERTY OWNERSHIP. WE BELIEVE THIS INFORMATION TO  
 BE CORRECT AND CURRENT; HOWEVER IT IS NOT INTENDED FOR ANY  
 LEGAL USE, WHETHER IT BE IN SALES, TRANSFERS, TRADES, LEASES  
 OF ANY TYPE, ETC., AND DO NOT ACCEPT RESPONSIBILITY FOR  
 ERRORS OF ANY NATURE OR OMISSIONS CONTAINED HEREIN.

(Symbol) new survey required  
 (Symbol) for next transfer

Last Revision: 10/14/2011  
**T-10, R-4, 2nd. Qtr. Lot 2**  
**T-10, R-4, 3rd. Qtr.**  
**Lots 9,10,23,24**  
**Paint Twp.**  
**Holmes County, Ohio**

**P-15**

Tuscarawas County, Wayne Township  
 T10, R4, 3rd. Qtr. Lot 8  
 Tuscarawas County, Wayne Township  
 T10, R4, 3rd. Qtr. Lot 7