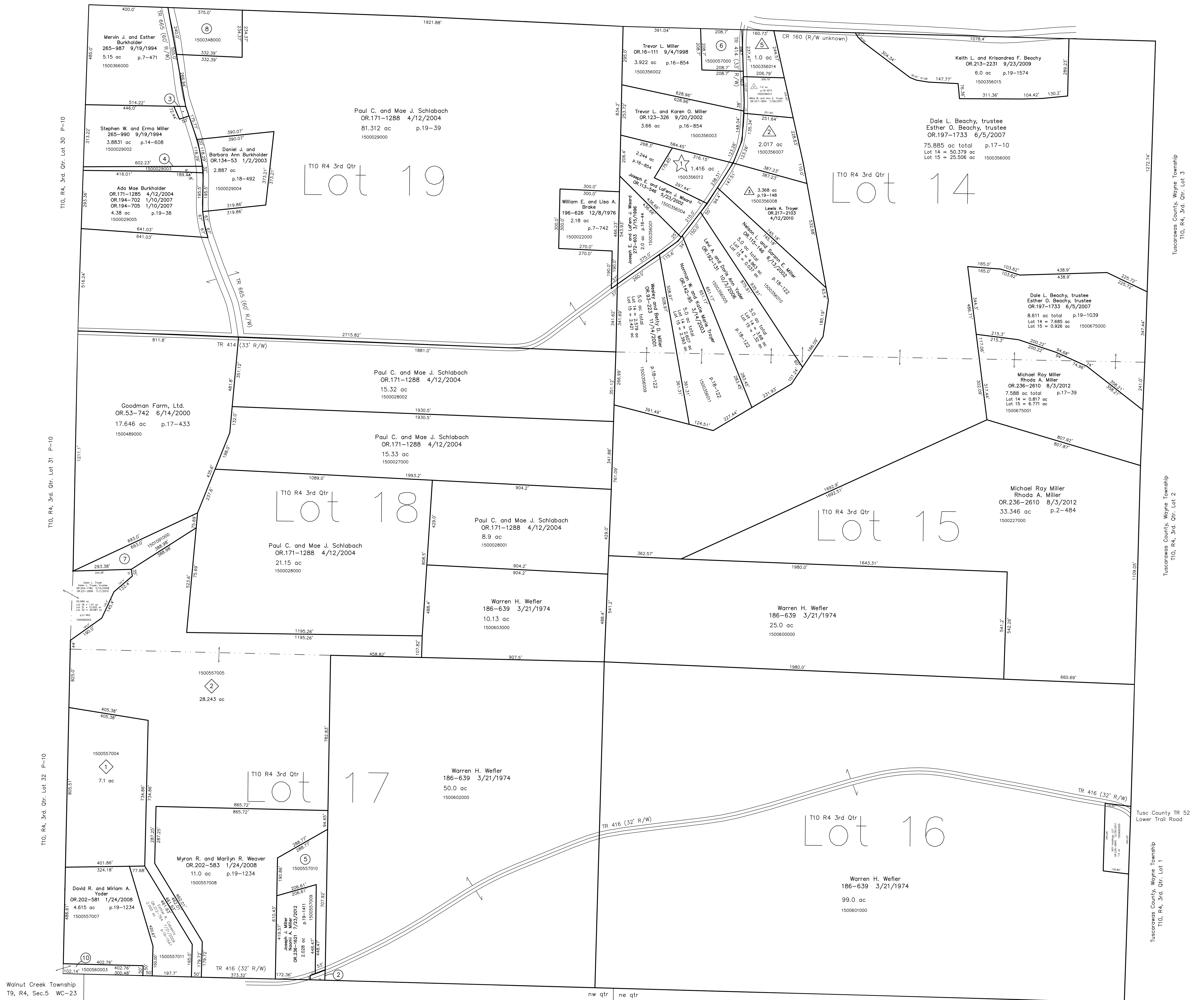


- 1500557001 ② Troy E. and Linda K. Phillips  
265-552 8/15/1994  
0.064 ac p.14-581
- 1500029001 ③ Merin J. and Esther Burkholder  
265-987 9/19/1994  
0.0799 ac p.14-607
- 1500029003 ④ Stephen W. and Erma Miller  
OR.97-685 12/27/2001  
0.329 ac p.18-164
- 1500557010 ⑤ Joseph J. and Naomi A. Miller  
OR.207-2761 11/13/2008  
1.807 ac p.19-1411
- 1500057000 ⑥ Fannie May Garber  
207-140 8/29/1979  
OR.16-440 9/11/1998  
1.0 ac p.4-74
- 1501091000 ⑦ Goodman Farm, Ltd.  
OR.33-742 8/14/2000  
1.93 ac p.17-433
- 1500348000 ⑧ Robert E. and Iva Hershberger  
214-856 10/15/1981  
1.9 ac p.7-507
- 0000000000 ⑨ not used
- 1500560003 ⑩ David R. and Miriam A. Yoder  
OR.212-762 7/21/2009  
2.463 ac total p.2-462  
(0.463 ac Lot 17 + 2.000 ac Lot 32)

T10, R4, 3rd. Qtr. Lot 20 P-14

T10, R4, 3rd. Qtr. Lot 13 P-14



Walnut Creek Township  
T9, R4, Sec.5 WC-23

Walnut Creek Township T9, R4, Sec.4 WC-29

① Foggy Bottom  
Plat 16-81 Platted 9/20/2001

1500356007 ③ Willis W. and Ann E. Troyer  
OR.192-1667 10/20/2006  
2.017 ac p.18-81

0000000000 ⑨ see map

④ Foggy Bottom Subdivision Replat &  
Renumbering of Lot 1  
Plat 19-873 Platted 11/29/2006

⑤ see map

1500356014 ⑥ Trevor L. and Karen O. Miller  
OR.212-2356 8/10/2009  
1.0 ac p.19-873

⑦ Ward Hills Music Subdivision  
Plat 19-148 Platted 8/10/2004

1500356012 ⑧ Joseph E. and LaFerm J. Weard  
OR.225-3052 5/11/2011  
1.416 ac p.19-148

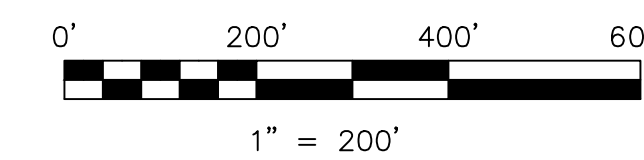
② Troyer Farm View Subdivision  
Plat 19-1211 Platted 12/18/2007

1500557004 ④ Merin E. Mast  
OR.202-259 1/17/2008  
7.1 ac p.19-1211

1500557005 ⑤ Merle R. and Naomi E. Beachy  
OR.202-387 1/18/2008  
28.243 ac p.19-1211

Last Revision: 8/3/2012

**T-10, R-4, 3rd. Qtr.**  
**Lots 14,15,16,17,18,19**  
**Paint Twp.**  
**Holmes County, Ohio**



LET IT BE KNOWN, THIS MAP HAS BEEN PREPARED AS A REFERENCE  
GUIDE TO PROPERTY OWNERSHIP. WE BELIEVE THIS INFORMATION TO  
BE CORRECT AND CURRENT; HOWEVER IT IS NOT INTENDED FOR ANY  
LEGAL USE, WHETHER IT BE IN SALES, TRANSFERS, TRADES, LEASES  
OF ANY TYPE, ETC., AND DO NOT ACCEPT RESPONSIBILITY FOR  
ERRORS OF ANY NATURE OR OMISSIONS CONTAINED HEREIN.

① new survey required  
for next transfer

**P-13**