

1500328000 ① Allen O. and Naomi H. Yoder
OR.208-941 12/18/2008
0.75 ac p.7-93

1500625001 ③ Mervin E. and Twila Raber
264-324 5/20/1994
0.719 ac p.14-514

1500672001 ④ Esta D. Fehr
OR.202-338 1/17/2008
0.598 ac p.12-749

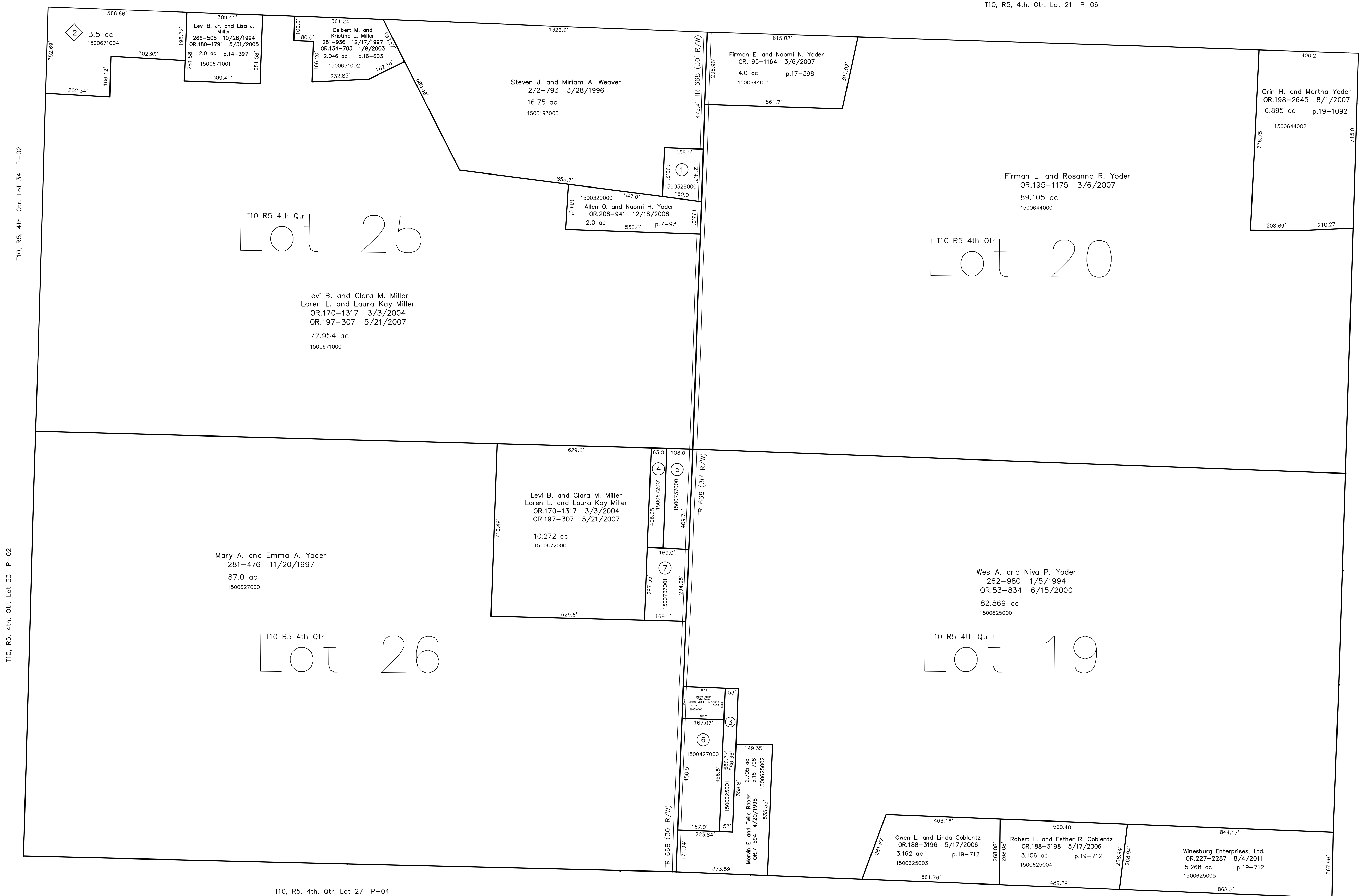
1500737000 ⑤ Esta D. Fehr
OR.202-338 1/17/2008
0.392 ac

1500427000 ⑥ Mervin E. and Twila Raber
200-432 11/23/1977
254-522 5/20/1994
1.751 ac p.8-112

1500737001 ⑦ Nelson R. and Esther C. (Fehr) Troyer
OR.202-336 1/17/2008
OR.207-152 10/1/2008
1.148 ac p.19-1250

T10, R5, 4th. Qtr. Lot 24 P-06

T10, R5, 4th. Qtr. Lot 21 P-06



T10, R5, 4th. Qtr. Lot 34 P-02

T10, R5, 4th. Qtr. Lot 33 P-02

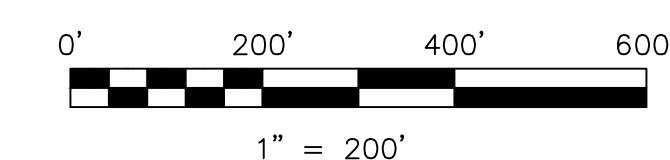
T10, R5, 4th. Qtr. Lot 27 P-04

T10, R5, 4th. Qtr. Lot 18 P-04

Miller's Wooded Acres Subdivision Replat
Plat 19-893 Plotted 12/20/2006

1500671004 ② Loren L. and Laura Kay Miller
OR.195-2149 3/19/2007
3.5 ac p.19-893

Last Revision: 12/7/2012
T-10, R-5, 4th. Qtr.
Lots 19,20,25,26
Paint Twp.
Holmes County, Ohio



LET IT BE KNOWN, THIS MAP HAS BEEN PREPARED AS A REFERENCE
GUIDE TO PROPERTY OWNERSHIP. WE BELIEVE THIS INFORMATION TO
BE CORRECT AND CURRENT, HOWEVER IT IS NOT INTENDED FOR ANY
LEGAL USE, WHETHER IT BE IN SALES, TRANSFERS, TRADES, LEASES
OR ANY TYPE, ETC., AND DO NOT ACCEPT RESPONSIBILITY FOR
ERRORS OF ANY NATURE OR OMISSIONS CONTAINED HEREIN.

new survey required
for next transfer

P-05