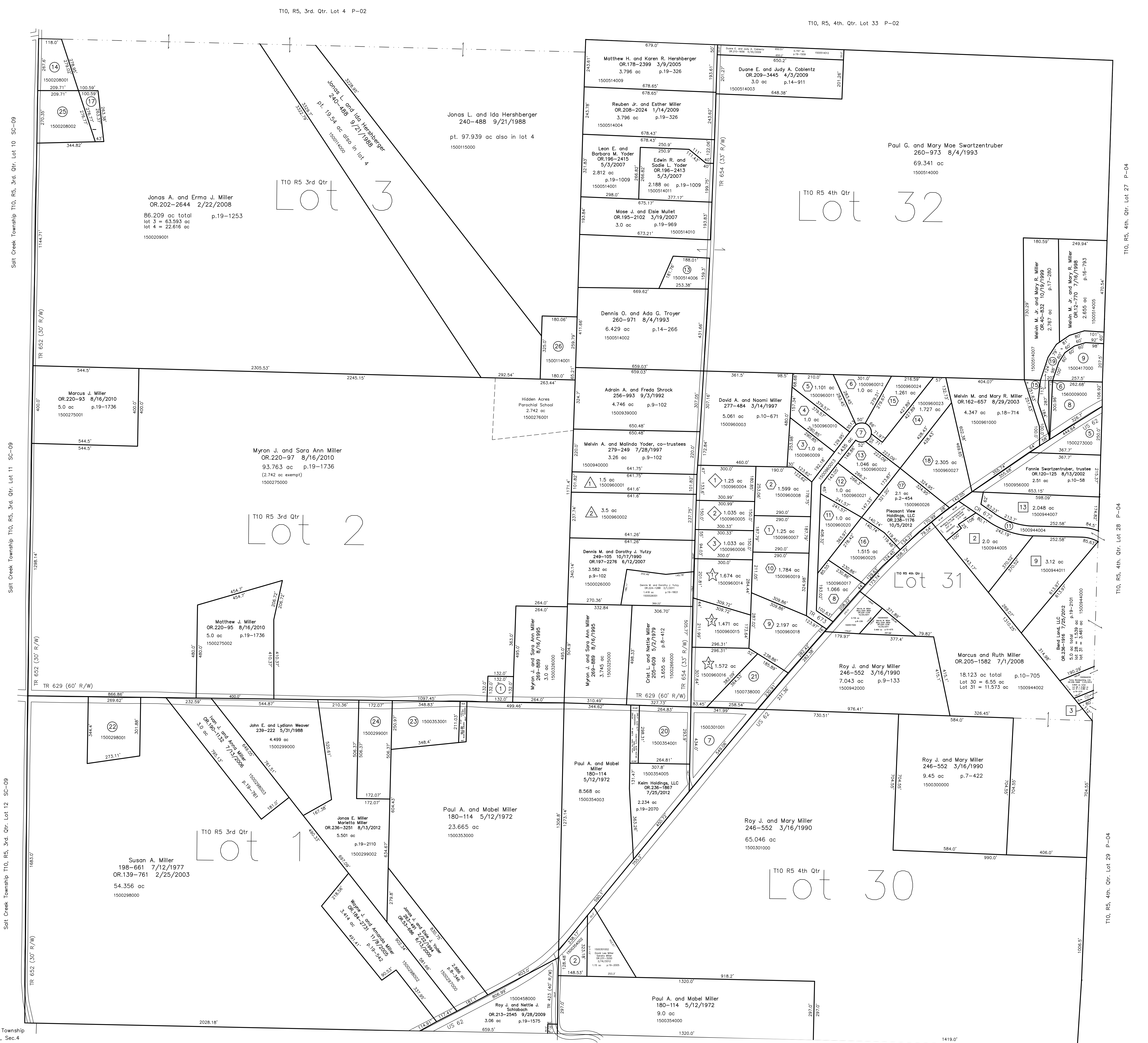
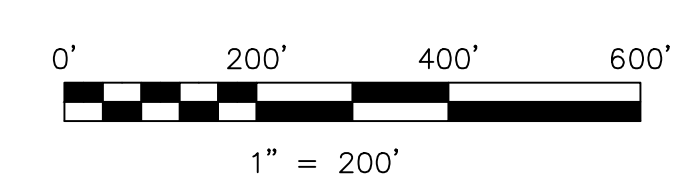


- 1500326001 ① Myron J. and Sara Ann Miller
269-889 8/16/1995
0.4 ac
- 1500354002 ② Paul A. and Mabel Miller
180-114 5/12/1971
0.75 ac
- 0000000000 ③ not used
- 0000000000 ④ not used
- 1500273000 ⑤ Dennis D. and Gladys C. Miller
209-38 3/14/1980
231-570 6/19/1986
1.06 ac p.8-585
- 1500958000 ⑥ Pleasant View Mennonite Church
218-460 10/7/1992
0.068 ac p.9-142
- 1500301001 ⑦ Daniel W. Steiner and Harley S. Hochstetler
OR.176-988 11/6/2004
1.704 ac p.19-238
- 1560009000 ⑧ Trustees of Amiah Mennonite Conservative Church of the Pleasant View Congregation
103-459 4/28/1936
1.23 ac
- 1500417000 ⑨ Pleasant View Conservative Mennonite Church
1061 ac 9/17/1984
p.4-33
- 0000000000 ⑩ not used
- 1500944004 ⑪ Holmes County Board of Commissioners
248-986 10/10/1990
270-164 9/6/1995
0.83 ac p.15-62
- 1500519004 ⑫ Yutzky Woodworking, Ltd.
OR.209-3045 3/27/2009
0.079 ac p.14-381
- 1500514006 ⑬ Wayne G. Swartzentruber
OR.64-203 12/15/2000
0.83 ac p.16-908
- 1500208001 ⑭ Willis E. Troyer and Mary Yoder
OR.37-109 8/17/1999
1.0 ac p.17-192
- 1500961001 ⑮ Melvin M. and Mary R. Miller
OR.47-187 2/15/2004
0.333 ac p.17-388
- 0000000000 ⑯ not used
- 1500208003 ⑰ Roy J. and Ida E. Most
OR.101-216 1/28/2002
0.436 ac p.18-109
- 1500458001 ⑱ Ben J. and Erma Miller
OR.134-664 1/8/2003
0.058 ac p.18-495
- 1500514008 ⑲ Pleasant View Mennonite Church
OR.178-1092 2/17/2005
0.819 ac p.19-314
- 1500354001 ⑳ Leroy Jay and Marie Keim
268-210 10/4/1994
1.8 ac p.4-622
- 1500738000 ㉑ Holmes Laboratory, Inc.
OR.19-202 10/29/1998
1.297 ac p.8-262
- 1500298001 ㉒ Paul J. and Katie J. Miller
OR.31-337 5/11/1999
2.0 ac p.1-1000
- 1500353001 ㉓ Mark P. and Madeline Miller
253-558 11/25/1991
1.841 ac p.12-799
- 1500299001 ㉔ Jonas E. and Marietta Miller
252-434 8/7/1991
2.0 ac p.12-724
- 1500208002 ㉕ Roy J. and Ida E. Most
OR.35-782 7/26/1999
1.565 ac p.17-192
- 1500114001 ㉖ David G. Swartzentruber
OR.50-261 4/10/2000
1.343 ac p.19-459



- East Holmes Industrial Park Allotment No.2
Plat 13-179 Platted 2/2/1993
- 1500944005 ② Quarter Circle L OH Investment LLC
OR.188-2287 5/8/2006
2.0 ac p.13-179
- East Holmes Industrial Park Allotment No.3
Plat 13-197 Platted 7/16/1993
- 1500944006 ③ Yutzky Woodworking, Ltd.
OR.209-3045 3/27/2009
0.099 ac (p.2.0 ac total)
- East Holmes Industrial Park Allotment No.5
Plat 2-329 Platted 2/15/2001
- 1500944011 ⑨ Quarter Circle L OH Investment LLC
OR.188-2287 5/8/2006
3.12 ac p.2-329
- 1500944007 ⑬ Timberstone Ltd.
OR.68-1 2/20/2001
2.048 ac p.2-329
- Swartzentruber Allotment No.1
Plat 2-194 Platted 12/12/1986
- 1500960001 ① Edwin D. and Frances K. Troyer
233-791 12/23/1986
1.5 ac p.2-194
- 1500960002 ② Marvin A. and Clara M. Troyer
OR.186-2505 5/4/2007
3.5 ac p.2-194
- Swartzentruber Allotment No.2
Plat 13-131 Platted 4/2/1991
- 1500960004 ④ Olen J. and Mary A. Miller
280-274 10/10/1997
1.25 ac p.13-131
- 1500960005 ⑤ Raymond M. and Laurie R. Miller
OR.82-521 7/25/2001
1.035 ac p.13-131
- 1500960006 ⑥ Raymond M. and Laurie Miller
264-628 6/1/1994
1.035 ac p.13-131
- Swartzentruber Allotment No.3
Plat 2-267 Platted 1/3/1997
- 1500960007 ⑦ Mervin M. and Mary Ellen Miller
277-774 4/9/1997
1.25 ac p.2-267
- 1500960008 ⑧ Mervin M. and Mary Ellen Miller
OR.132-301 12/16/2002
1.035 ac p.13-131
- 1500960009 ⑨ Bruce G. Blanke, trustee
OR.205-713 6/18/2008
1.599 ac p.2-267
- 1500960010 ⑩ Bruce G. Blanke, trustee
OR.205-2191 7/9/2008
1.0 ac p.2-267
- 1500960011 ⑪ Wayne S. and Madeline K. Schiobach
OR.209-1074 2/27/2009
1.101 ac p.2-267
- 1500960012 ⑫ Samuel J. and Sandra K. Stoltzfus
OR.37-979 8/31/1999
1.0 ac p.2-267
- 1500960013 ⑬ The Holmes County Board of Commissioners
OR.187-426 3/3/2006
OR.183-2220 9/30/2005 p.19-511
1.435 ac p.2-267
- Swartzentruber Allotment No.3-First Addition
Plat 2-428 Platted 5/23/2006
- 1500960017 ⑯ Junior Swartzentruber, trustee
OR.215-1883 12/18/2009
1.068 ac p.2-428
- 1500960018 ⑰ Junior Swartzentruber, trustee
OR.215-1883 12/18/2009
2.197 ac p.2-428
- 1500960019 ⑱ Junior Swartzentruber, trustee
OR.215-1883 12/18/2009
1.784 ac p.2-428
- 1500960020 ⑲ Junior Swartzentruber, trustee
OR.215-1883 12/18/2009
1.0 ac p.2-428
- 1500960021 ⑳ Junior Swartzentruber, trustee
OR.215-1883 12/18/2009
1.0 ac p.2-428
- 1500960022 ㉑ Theron J. and Betty J. Maloney
OR.199-557 8/21/2007
1.046 ac p.2-428
- 1500960023 ㉒ Junior Swartzentruber, trustee
OR.215-1883 12/18/2009
1.727 ac p.2-428
- 1500960024 ㉓ Junior Swartzentruber, trustee
OR.215-1883 12/18/2009
1.261 ac p.2-428
- Swartzentruber Allotment No.3-Second Addition
Plat 2-438 Platted 11/2/2006
re-recorded Plat 2-454 Platted 12/27/2007
- 1500960025 ㉔ Pleasant View Holdings, LLC
OR.201-3872 12/31/2007
1.515 ac p.2-438
- 0000000000 ㉕ see map
- 1500960027 ㉖ Junior Swartzentruber, trustee
OR.215-1883 12/18/2009
2.309 ac p.2-438
- Swartzentruber Allotment No.4
Plat 18-588 Platted 4/14/2003
- 1500960014 ① Raymond M. and Laurie Miller
OR.147-382 4/30/2003
1.874 ac p.18-588
- 1500960015 ② Wayne L. and Maryanna M. Weaver
OR.147-3873 4/30/2003
1.471 ac p.18-588
- 1500960016 ③ Reuben Jr. and Esther Miller
OR.208-2024 1/14/2009
3.796 ac p.19-326



LET IT BE KNOWN, THIS MAP HAS BEEN PREPARED AS A REFERENCE GUIDE TO PROPERTY OWNERSHIP. WE BELIEVE THIS INFORMATION TO BE CORRECT AND CURRENT; HOWEVER, IT IS NOT INTENDED FOR ANY LEGAL USE, WHETHER IT BE IN SALES, TRANSFERS, TRADES, LEASES OR ANY TYPE, ETC., AND DOES NOT ACCEPT RESPONSIBILITY FOR ERRORS OF ANY NATURE OR OMISSIONS CONTAINED HEREIN.

new survey required for next transfer

Last Revision: 10/5/2012
T-10, R-5,
3rd. Qtr. Lots 1,2,3
4th. Qtr. Lots 30,31,32
Paint Twp.
Holmes County, Ohio

P-01