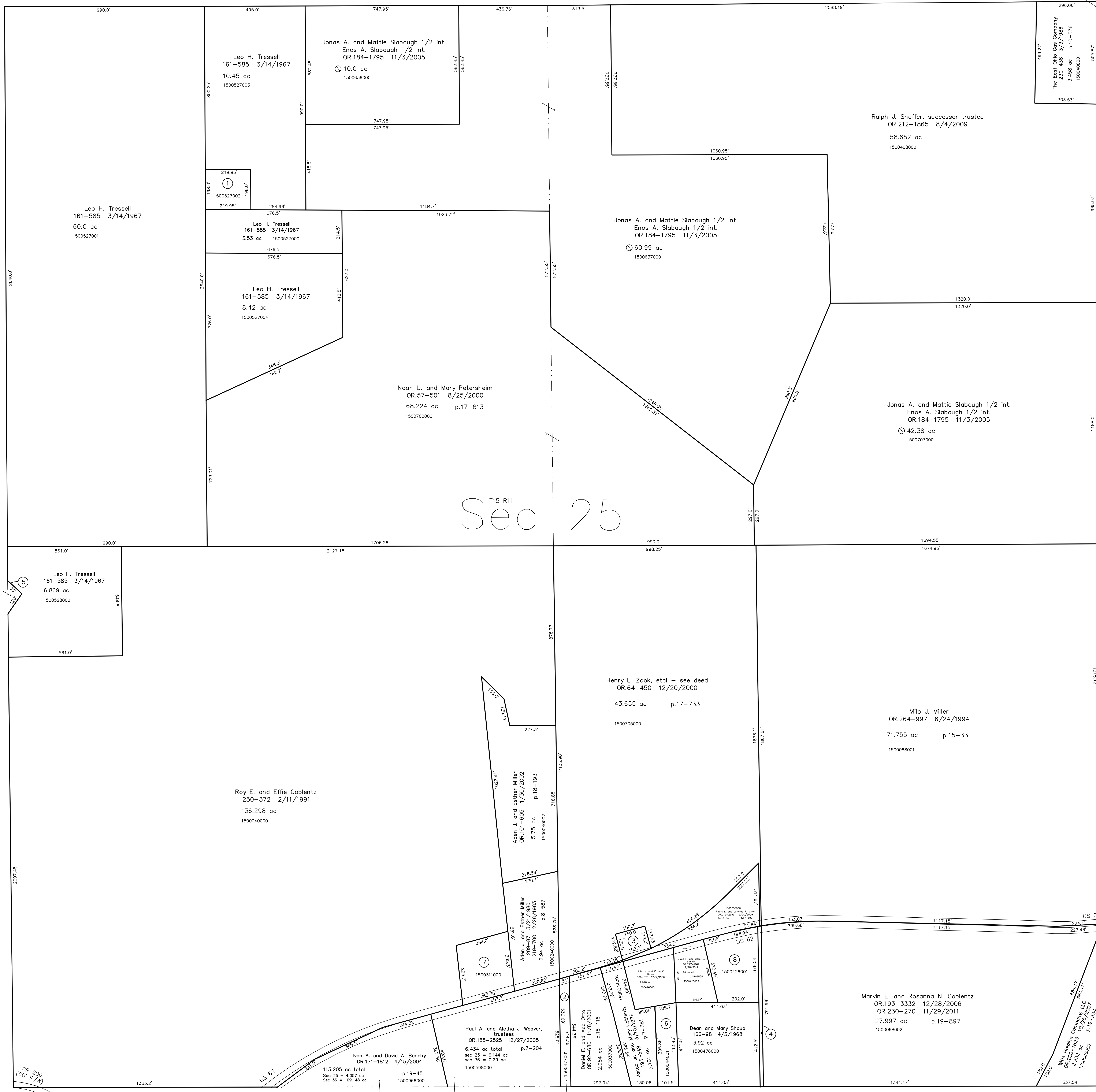


- 1500527002 ① Leo H. Tressell
161-585 3/14/1967
1.0 ac
- 1500477001 ② Loren E. and Ruth A. Wengert
OR.92-877 11/8/2001
0.617 ac p.19-116
- 1590009000 ③ Holmes-Wayne Electric Cooperative, Inc.
132-514 5/28/1956
Corp.1-24 3/30/1959
0.42 ac
- 1500476001 ④ Dean and Mary Shoup
166-98 4/3/1968
0.3 ac
- 1500528001 ⑤ David J. and Lori E. Coppillo
267-869 3/13/1995
0.131 ac p.14-761
- 1500044001 ⑥ John V. and Erma K. Rober
OR.183-1906 9/27/2005
0.958 ac p.19-506
- 1500311000 ⑦ Eli R. and Druclilla A. Coblentz
OR.54-755 7/5/2000
1.762 ac p.8-587
- 1500426001 ⑧ Owen F. and Carol L. Shevlin
OR.204-3323 6/16/2008
1.906 ac p.16-437



T15, R11, Sec.26 P-30

Stark County, Sugar Creek Township, T11, R10, Sec.32

sw corner ne qtr sec 32

nw corner sw qtr sec 32

Stark County US 62

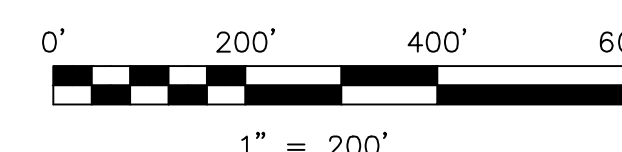
Navarre Road SW

T-15, R-11, Sec.36 P-32

Last Revision: 11/29/2011

T-15, R-11, Sec.25
Paint Twp.
Holmes County, Ohio

P-33



LET IT BE KNOWN, THIS MAP HAS BEEN PREPARED AS A REFERENCE GUIDE TO PROPERTY OWNERSHIP. WE BELIEVE THIS INFORMATION TO BE CORRECT AND CURRENT, HOWEVER IT IS NOT INTENDED FOR ANY LEGAL USE, WHETHER IT BE IN SALES, TRANSFERS, TRADES, LEASES OF ANY TYPE, ETC., AND DO NOT ACCEPT RESPONSIBILITY FOR ERRORS OF ANY NATURE OR OMISSIONS CONTAINED HEREIN.

new survey required for next transfer