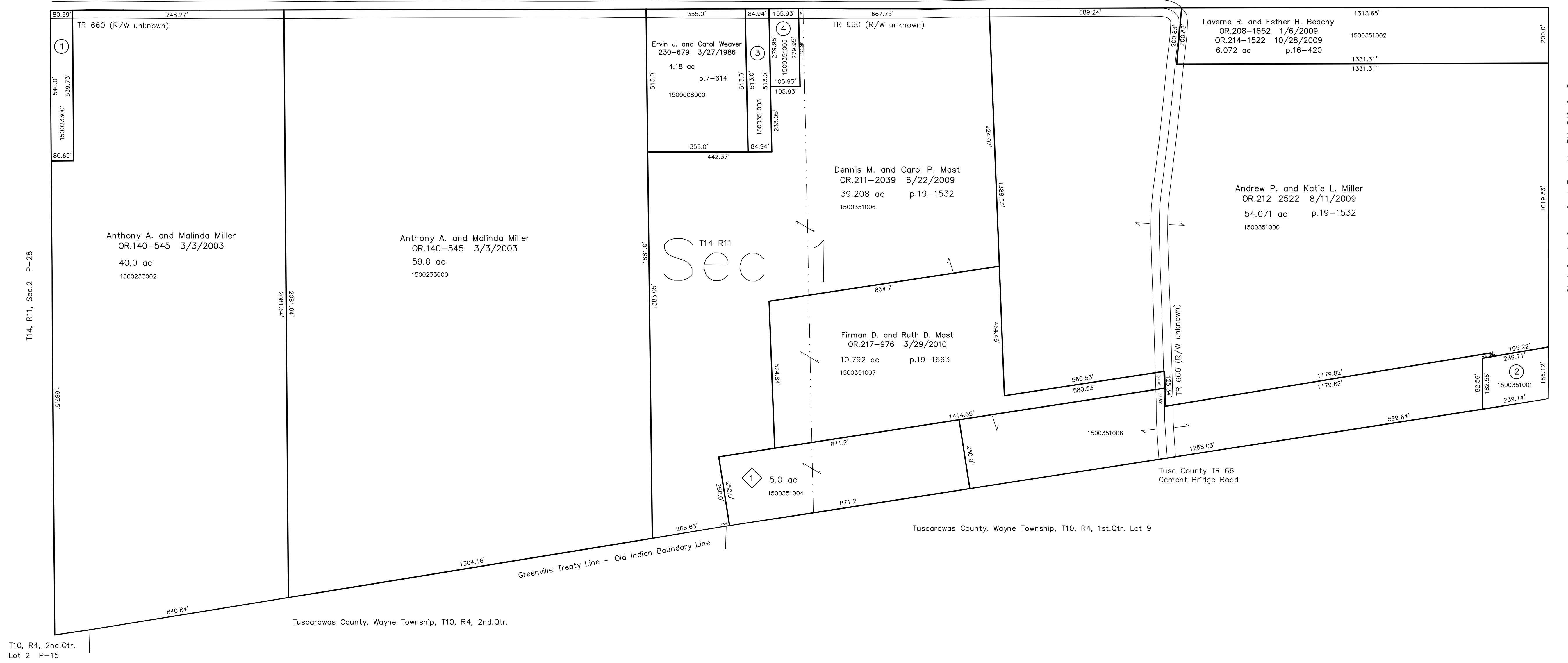


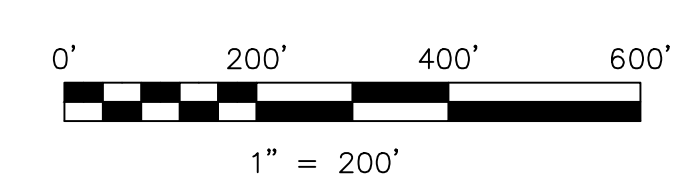
- 1500233001 ① Ray J. and Jacob J.J. Miller
OR.49-566 3/29/2000
1.0 ac p.14-697
- 1500351001 ② John W. and Fannie E. Miller
287-591 2/15/1995
1.0 ac p.14-731
- 1500351003 ③ Lester E. Weaver
OR.191-2082 9/12/2006
1.0 ac p.16-487
- 1500351005 ④ Lester E. Weaver
OR.191-2078 9/12/2006
0.681 ac p.19-800

T15, R11, Sec.36 P-32



T10, R4, 2nd.Qtr.
Lot 2 P-15

- ◇ Vern Subdivision
Plat 19-301 Platted 2/3/2005
- 1500351004 ◇ Vern L. and Rachel D. Schlabach
OR.178-3227 3/22/2005
5.0 ac p.19-301



LET IT BE KNOWN, THIS MAP HAS BEEN PREPARED AS A REFERENCE GUIDE TO PROPERTY OWNERSHIP. WE BELIEVE THIS INFORMATION TO BE CORRECT AND CURRENT; HOWEVER IT IS NOT INTENDED FOR ANY LEGAL USE, WHETHER IT BE IN SALES, TRANSFERS, TRADES, LEASES OF ANY TYPE, ETC., AND DO NOT ACCEPT RESPONSIBILITY FOR ERRORS OF ANY NATURE OR OMISSIONS CONTAINED HEREIN.

◇ new survey required for next transfer

Last Revision: 3/29/2010
T-14, R-11, Sec.1
Paint Twp.
Holmes County, Ohio
P-31

Stark County, Sugar Creek Township, T11, R10, Sec.5