

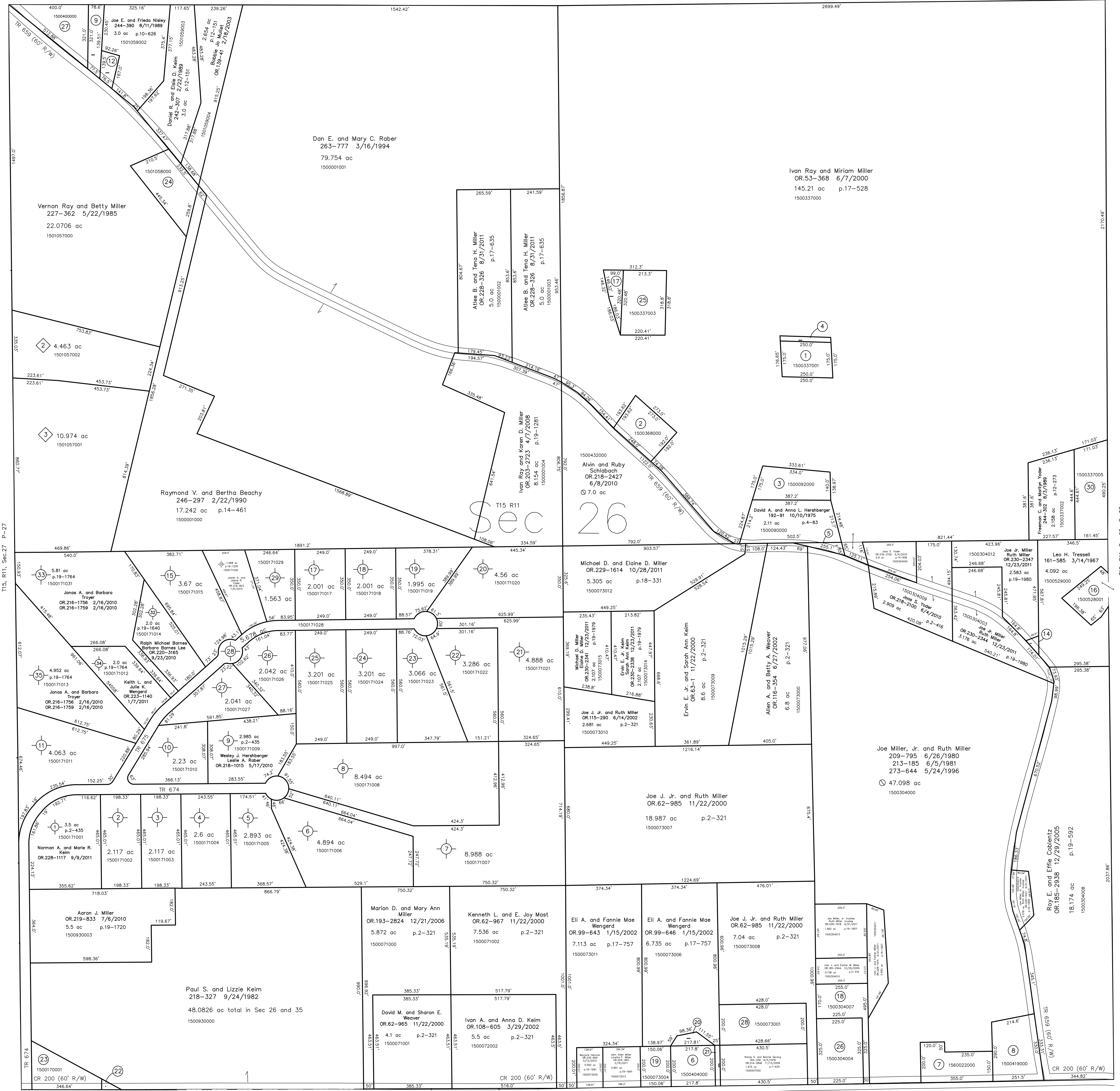
- 1500171002 ② New Morgan Holdings, Ltd. OR.211-244 5/29/2009 2.117 ac p.2-435
- 1500171003 ③ New Morgan Holdings, Ltd. OR.211-244 5/29/2009 2.117 ac p.2-435
- 1500171004 ④ New Morgan Holdings, Ltd. OR.211-244 5/29/2009 2.8 ac p.2-435
- 1500171005 ⑤ Larry and Rita Keim OR.198-1331 7/18/2007 2.893 ac p.2-435
- 1500171006 ⑥ Larry and Rita Keim OR.198-1331 7/18/2007 4.894 ac p.2-435
- 1500171007 ⑦ Edwin E. and Susan Miller OR.198-1971 7/24/2007 8.988 ac p.2-435
- 1500171008 ⑧ New Morgan Holdings, Ltd. OR.211-244 5/29/2009 8.494 ac p.2-435
- ⑨ - see map
- 1500171010 ⑩ Dominica M. and Karen J. Palmer OR.198-1615 7/20/2007 2.23 ac p.2-435
- 1500171011 ⑪ David E. and Ruth E. Miller OR.198-1618 7/20/2007 4.063 ac p.2-435
- ⑫ - void replatted
- ⑬ - void replatted
- 1500171015 ⑮ James D. and Ruth A. Mullet OR.198-1409 7/18/2007 3.67 ac p.2-435
- 1500171017 ⑰ Paul J. and John J. Yoder OR.204-2552 5/27/2008 2.001 ac p.2-435
- 1500171018 ⑱ Clifford W. Sprang and Melissa F. Miller OR.198-1338 7/18/2007 2.001 ac p.2-435
- 1500171019 ⑲ Myron R. and Laura R. Yoder OR.198-1304 7/17/2007 1.098 ac p.2-435
- 1500171020 ⑳ Daniel L. and Frieda Mast OR.198-1307 7/17/2007 4.56 ac p.2-435
- 1500171021 ㉑ Vernon E. and Elias L. Yoder OR.214-690 10/16/2009 4.888 ac p.2-435
- 1500171022 ㉒ New Morgan Holdings, Ltd. OR.211-244 5/29/2009 3.086 ac p.2-435
- 1500171023 ㉓ New Morgan Holdings, Ltd. OR.211-244 5/29/2009 3.086 ac p.2-435
- 1500171024 ㉔ New Morgan Holdings, Ltd. OR.211-244 5/29/2009 3.201 ac p.2-435
- 1500171025 ㉕ New Morgan Holdings, Ltd. OR.211-244 5/29/2009 3.201 ac p.2-435
- 1500171026 ㉖ Matthew L. and Holly C. Johnson OR.198-627 7/23/2007 2.042 ac p.2-435
- 1500171027 ㉗ Jonathan L. and Tammy L. Troyer OR.198-1983 7/24/2007 2.041 ac p.2-435
- 1500171028 ㉘ The Board of Commissioners of Holmes County, Ohio OR.198-232 8/17/2007 dedication of TR 674 and TR 675 (res.#09-10-07-1) OR.200-353 10/5/2007 and p.19-1155 5.678 ac p.2-435
- 1500171029 ㉙ Cornerstone Homes of Winesburg, Inc. OR.198-2516 7/30/2007 1.563 ac p.19-1005
- ⑚ - see map

- Crab Apple North Subdivision Replat of Lots 13 & 14 Plat 19-1640 Platted 2/2/2010
- Crab Apple North Subdivision Replat of Lots 12 & 31 Plat 19-1764 Platted 11/9/2010

- Rabbit Run Subdivision Replat of Lot 1 Plat 2-398 Platted 6/29/2005
- 1500570002 ① James L. and Joanna Miller OR.182-1598 8/15/2005 4.463 ac p.2-398
- 1500570001 ② Vernon Ray and Betty Miller OR.182-1595 8/15/2005 10.974 ac p.2-398

- 1500337001 ① Duane R. and Marlene Miller OR.211-244 5/29/2009 2.117 ac p.2-435
- 1500368000 ② Roy L. and Sue Miller OR.193-579 3/31/1976 2.41-170 11/7/1988 1.1482 ac p.7-590
- 1500092000 ③ David A. and Anna L. Hershberger OR.192-91 10/10/1975 2.41-318 11/21/1988 1.278 ac p.5-69
- 1500337006 ④ Duane R. and Marlene Miller OR.174-131 8/9/2004 0.143 ac p.19-146
- 1500091000 ⑤ David A. and Anna L. Hershberger OR.192-91 10/10/1975 2.41-318 11/21/1988 1.278 ac p.5-69
- 1500440000 ⑥ Brenda S. Oswald OR.228-842 9/24/1985 1.0 ac p.8-467
- 1560022000 ⑦ Trustees of the West Belder Amish Parochial School OR.178-170 10/1/1971 1.36 ac p.5-97
- 1500419000 ⑧ Allen L. and Linda R. Mast OR.203-502 3/11/2008 1.649 ac p.4-117
- 1501059001 ⑨ Joe E. and Frieda Nisley OR.232-340 9/11/1988 0.5561 ac p.10-606

- 1500337001 ① Duane R. and Marlene Miller OR.211-244 5/29/2009 2.117 ac p.2-435
- 1500368000 ② Roy L. and Sue Miller OR.193-579 3/31/1976 2.41-170 11/7/1988 1.1482 ac p.7-590
- 1500092000 ③ David A. and Anna L. Hershberger OR.192-91 10/10/1975 2.41-318 11/21/1988 1.278 ac p.5-69
- 1500337006 ④ Duane R. and Marlene Miller OR.174-131 8/9/2004 0.143 ac p.19-146
- 1500091000 ⑤ David A. and Anna L. Hershberger OR.192-91 10/10/1975 2.41-318 11/21/1988 1.278 ac p.5-69
- 1500440000 ⑥ Brenda S. Oswald OR.228-842 9/24/1985 1.0 ac p.8-467
- 1560022000 ⑦ Trustees of the West Belder Amish Parochial School OR.178-170 10/1/1971 1.36 ac p.5-97
- 1500419000 ⑧ Allen L. and Linda R. Mast OR.203-502 3/11/2008 1.649 ac p.4-117
- 1501059001 ⑨ Joe E. and Frieda Nisley OR.232-340 9/11/1988 0.5561 ac p.10-606



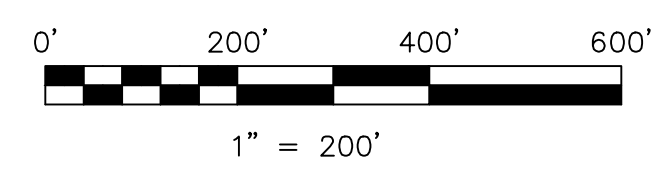
- 1500337001 ① Duane R. and Marlene Miller OR.211-244 5/29/2009 2.117 ac p.2-435
- 1500368000 ② Roy L. and Sue Miller OR.193-579 3/31/1976 2.41-170 11/7/1988 1.1482 ac p.7-590
- 1500092000 ③ David A. and Anna L. Hershberger OR.192-91 10/10/1975 2.41-318 11/21/1988 1.278 ac p.5-69
- 1500337006 ④ Duane R. and Marlene Miller OR.174-131 8/9/2004 0.143 ac p.19-146
- 1500091000 ⑤ David A. and Anna L. Hershberger OR.192-91 10/10/1975 2.41-318 11/21/1988 1.278 ac p.5-69
- 1500440000 ⑥ Brenda S. Oswald OR.228-842 9/24/1985 1.0 ac p.8-467
- 1560022000 ⑦ Trustees of the West Belder Amish Parochial School OR.178-170 10/1/1971 1.36 ac p.5-97
- 1500419000 ⑧ Allen L. and Linda R. Mast OR.203-502 3/11/2008 1.649 ac p.4-117
- 1501059001 ⑨ Joe E. and Frieda Nisley OR.232-340 9/11/1988 0.5561 ac p.10-606

- 1500337001 ① Duane R. and Marlene Miller OR.211-244 5/29/2009 2.117 ac p.2-435
- 1500368000 ② Roy L. and Sue Miller OR.193-579 3/31/1976 2.41-170 11/7/1988 1.1482 ac p.7-590
- 1500092000 ③ David A. and Anna L. Hershberger OR.192-91 10/10/1975 2.41-318 11/21/1988 1.278 ac p.5-69
- 1500337006 ④ Duane R. and Marlene Miller OR.174-131 8/9/2004 0.143 ac p.19-146
- 1500091000 ⑤ David A. and Anna L. Hershberger OR.192-91 10/10/1975 2.41-318 11/21/1988 1.278 ac p.5-69
- 1500440000 ⑥ Brenda S. Oswald OR.228-842 9/24/1985 1.0 ac p.8-467
- 1560022000 ⑦ Trustees of the West Belder Amish Parochial School OR.178-170 10/1/1971 1.36 ac p.5-97
- 1500419000 ⑧ Allen L. and Linda R. Mast OR.203-502 3/11/2008 1.649 ac p.4-117
- 1501059001 ⑨ Joe E. and Frieda Nisley OR.232-340 9/11/1988 0.5561 ac p.10-606

- 1500337001 ① Duane R. and Marlene Miller OR.211-244 5/29/2009 2.117 ac p.2-435
- 1500368000 ② Roy L. and Sue Miller OR.193-579 3/31/1976 2.41-170 11/7/1988 1.1482 ac p.7-590
- 1500092000 ③ David A. and Anna L. Hershberger OR.192-91 10/10/1975 2.41-318 11/21/1988 1.278 ac p.5-69
- 1500337006 ④ Duane R. and Marlene Miller OR.174-131 8/9/2004 0.143 ac p.19-146
- 1500091000 ⑤ David A. and Anna L. Hershberger OR.192-91 10/10/1975 2.41-318 11/21/1988 1.278 ac p.5-69
- 1500440000 ⑥ Brenda S. Oswald OR.228-842 9/24/1985 1.0 ac p.8-467
- 1560022000 ⑦ Trustees of the West Belder Amish Parochial School OR.178-170 10/1/1971 1.36 ac p.5-97
- 1500419000 ⑧ Allen L. and Linda R. Mast OR.203-502 3/11/2008 1.649 ac p.4-117
- 1501059001 ⑨ Joe E. and Frieda Nisley OR.232-340 9/11/1988 0.5561 ac p.10-606

- 1500337001 ① Duane R. and Marlene Miller OR.211-244 5/29/2009 2.117 ac p.2-435
- 1500368000 ② Roy L. and Sue Miller OR.193-579 3/31/1976 2.41-170 11/7/1988 1.1482 ac p.7-590
- 1500092000 ③ David A. and Anna L. Hershberger OR.192-91 10/10/1975 2.41-318 11/21/1988 1.278 ac p.5-69
- 1500337006 ④ Duane R. and Marlene Miller OR.174-131 8/9/2004 0.143 ac p.19-146
- 1500091000 ⑤ David A. and Anna L. Hershberger OR.192-91 10/10/1975 2.41-318 11/21/1988 1.278 ac p.5-69
- 1500440000 ⑥ Brenda S. Oswald OR.228-842 9/24/1985 1.0 ac p.8-467
- 1560022000 ⑦ Trustees of the West Belder Amish Parochial School OR.178-170 10/1/1971 1.36 ac p.5-97
- 1500419000 ⑧ Allen L. and Linda R. Mast OR.203-502 3/11/2008 1.649 ac p.4-117
- 1501059001 ⑨ Joe E. and Frieda Nisley OR.232-340 9/11/1988 0.5561 ac p.10-606

- 1500337001 ① Duane R. and Marlene Miller OR.211-244 5/29/2009 2.117 ac p.2-435
- 1500368000 ② Roy L. and Sue Miller OR.193-579 3/31/1976 2.41-170 11/7/1988 1.1482 ac p.7-590
- 1500092000 ③ David A. and Anna L. Hershberger OR.192-91 10/10/1975 2.41-318 11/21/1988 1.278 ac p.5-69
- 1500337006 ④ Duane R. and Marlene Miller OR.174-131 8/9/2004 0.143 ac p.19-146
- 1500091000 ⑤ David A. and Anna L. Hershberger OR.192-91 10/10/1975 2.41-318 11/21/1988 1.278 ac p.5-69
- 1500440000 ⑥ Brenda S. Oswald OR.228-842 9/24/1985 1.0 ac p.8-467
- 1560022000 ⑦ Trustees of the West Belder Amish Parochial School OR.178-170 10/1/1971 1.36 ac p.5-97
- 1500419000 ⑧ Allen L. and Linda R. Mast OR.203-502 3/11/2008 1.649 ac p.4-117
- 1501059001 ⑨ Joe E. and Frieda Nisley OR.232-340 9/11/1988 0.5561 ac p.10-606



LET IT BE KNOWN, THIS MAP HAS BEEN PREPARED AS A REFERENCE GUIDE TO PROPERTY OWNERSHIP. WE BELIEVE THIS INFORMATION TO BE CORRECT AND CURRENT, HOWEVER IT IS NOT INTENDED FOR ANY LEGAL USE, WHETHER IT BE IN SALES, TRANSFERS, TRADES, LEASES OF ANY TYPE, ETC., AND DO NOT ACCEPT RESPONSIBILITY FOR ERRORS OF ANY NATURE OR OMISSIONS CONTAINED HEREIN.

new survey required
next transfer

Last Revision: 12/23/2011
T-15, R-11, Sec.26
Paint Twp.
Holmes County, Ohio

P-30