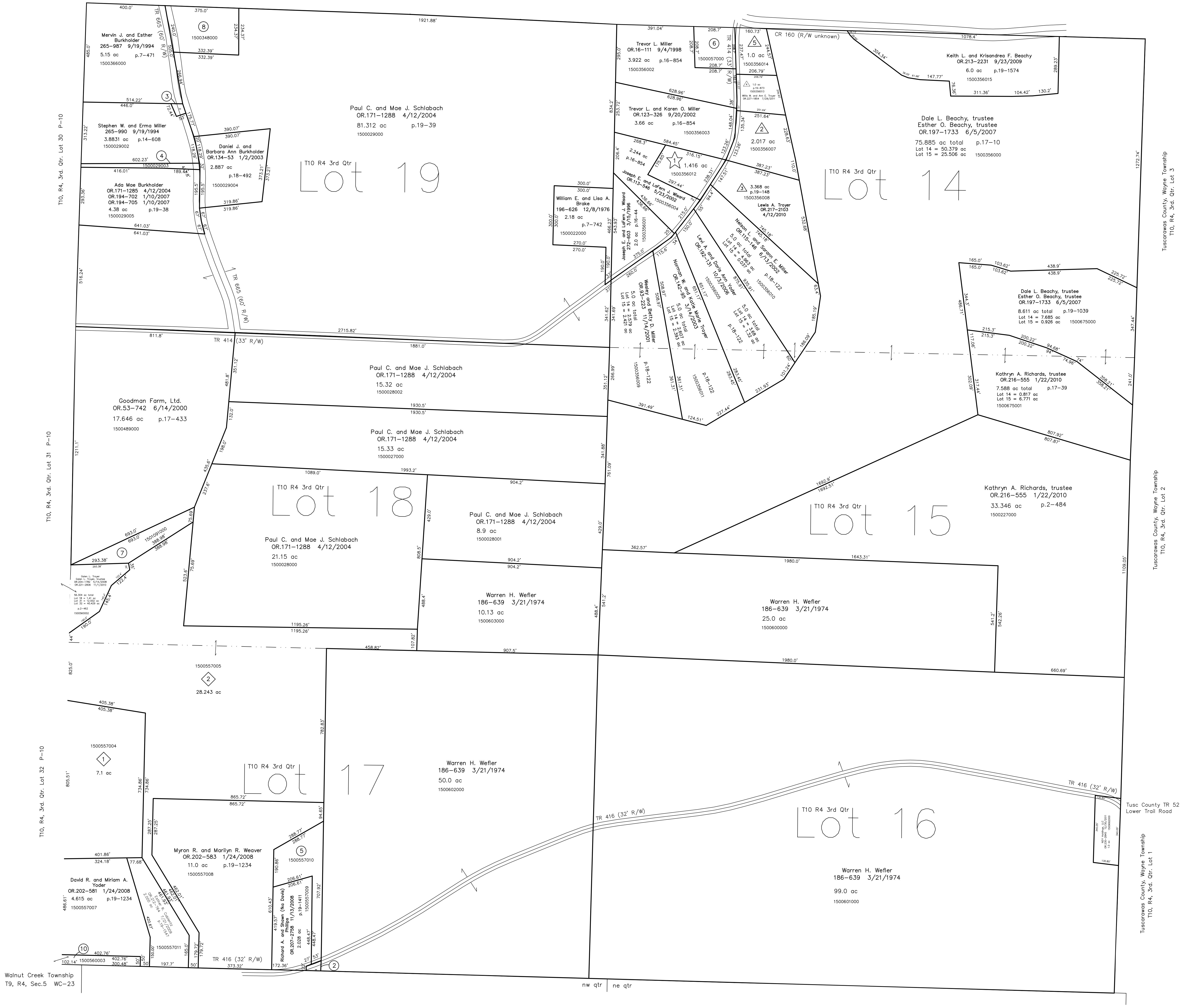


- 1500557001 ② Troy E. and Linda K. Phillips
265-552 8/15/1994
0.064 ac p.14-581
- 1500029001 ③ Merin J. and Esther Burkholder
265-987 9/19/1994
0.0799 ac p.14-607
- 1500029003 ④ Stephen W. and Erma Miller
OR.97-685 12/27/2001
0.329 ac p.18-164
- 1500557010 ⑤ Joseph J. and Naomi A. Miller
OR.207-2761 11/13/2008
1.807 ac p.19-1411
- 1500057000 ⑥ Fannie May Garber
207-140 8/29/1979
OR.16-440 9/11/1998
1.0 ac p.4-74
- 1501091000 ⑦ Goodman Farm, Ltd.
OR.33-742 8/14/2000
1.93 ac p.17-433
- 1500348000 ⑧ Robert E. and Iva Hershberger
214-856 10/15/1981
1.9 ac p.7-507
- 0000000000 ⑨ not used
- 1500560003 ⑩ David R. and Miriam A. Yoder
OR.212-762 7/21/2009
2.463 ac total p.2-462
(0.463 ac Lot 17 + 2.000 ac Lot 32)

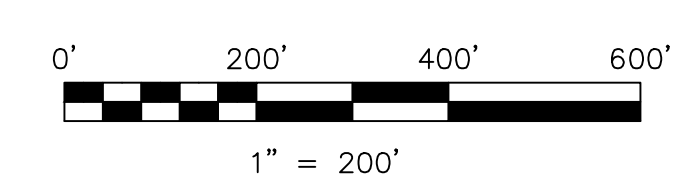
T10, R4, 3rd. Qtr. Lot 20 P-14

T10, R4, 3rd. Qtr. Lot 13 P-14



- ① Foggy Bottom
Plat 16-81 Platted 9/20/2001
- ② Troyer Farm View Subdivision
Plat 19-1211 Platted 12/18/2007
- ③ Willis W. and Ann E. Troyer
OR.192-1667 10/20/2006
2.017 ac p.18-81
- ④ Merin E. Mast
OR.202-259 1/17/2008
7.1 ac p.19-1211
- ⑤ Merle R. and Naomi E. Beachy
OR.202-387 1/18/2008
28.243 ac p.19-1211
- ⑥ Fannie May Garber
OR.202-583 1/24/2008
11.0 ac p.19-1234
- ⑦ Fanny May Garber
OR.202-583 1/24/2008
11.0 ac p.19-1234
- ⑧ Fannie May Garber
OR.202-583 1/24/2008
11.0 ac p.19-1234
- ⑨ Fannie May Garber
OR.202-583 1/24/2008
11.0 ac p.19-1234
- ⑩ Fannie May Garber
OR.202-583 1/24/2008
11.0 ac p.19-1234
- ⑪ Fannie May Garber
OR.202-583 1/24/2008
11.0 ac p.19-1234
- ⑫ Fannie May Garber
OR.202-583 1/24/2008
11.0 ac p.19-1234
- ⑬ Fannie May Garber
OR.202-583 1/24/2008
11.0 ac p.19-1234
- ⑭ Fannie May Garber
OR.202-583 1/24/2008
11.0 ac p.19-1234
- ⑮ Fannie May Garber
OR.202-583 1/24/2008
11.0 ac p.19-1234
- ⑯ Fannie May Garber
OR.202-583 1/24/2008
11.0 ac p.19-1234
- ⑰ Fannie May Garber
OR.202-583 1/24/2008
11.0 ac p.19-1234
- ⑱ Fannie May Garber
OR.202-583 1/24/2008
11.0 ac p.19-1234
- ⑲ Fannie May Garber
OR.202-583 1/24/2008
11.0 ac p.19-1234
- ⑳ Fannie May Garber
OR.202-583 1/24/2008
11.0 ac p.19-1234
- ㉑ Fannie May Garber
OR.202-583 1/24/2008
11.0 ac p.19-1234
- ㉒ Fannie May Garber
OR.202-583 1/24/2008
11.0 ac p.19-1234
- ㉓ Fannie May Garber
OR.202-583 1/24/2008
11.0 ac p.19-1234
- ㉔ Fannie May Garber
OR.202-583 1/24/2008
11.0 ac p.19-1234
- ㉕ Fannie May Garber
OR.202-583 1/24/2008
11.0 ac p.19-1234
- ㉖ Fannie May Garber
OR.202-583 1/24/2008
11.0 ac p.19-1234
- ㉗ Fannie May Garber
OR.202-583 1/24/2008
11.0 ac p.19-1234
- ㉘ Fannie May Garber
OR.202-583 1/24/2008
11.0 ac p.19-1234
- ㉙ Fannie May Garber
OR.202-583 1/24/2008
11.0 ac p.19-1234
- ㉚ Fannie May Garber
OR.202-583 1/24/2008
11.0 ac p.19-1234
- ㉛ Fannie May Garber
OR.202-583 1/24/2008
11.0 ac p.19-1234
- ㉜ Fannie May Garber
OR.202-583 1/24/2008
11.0 ac p.19-1234
- ㉝ Fannie May Garber
OR.202-583 1/24/2008
11.0 ac p.19-1234
- ㉞ Fannie May Garber
OR.202-583 1/24/2008
11.0 ac p.19-1234
- ㉟ Fannie May Garber
OR.202-583 1/24/2008
11.0 ac p.19-1234
- ㊱ Fannie May Garber
OR.202-583 1/24/2008
11.0 ac p.19-1234
- ㊲ Fannie May Garber
OR.202-583 1/24/2008
11.0 ac p.19-1234
- ㊳ Fannie May Garber
OR.202-583 1/24/2008
11.0 ac p.19-1234
- ㊴ Fannie May Garber
OR.202-583 1/24/2008
11.0 ac p.19-1234
- ㊵ Fannie May Garber
OR.202-583 1/24/2008
11.0 ac p.19-1234
- ㊶ Fannie May Garber
OR.202-583 1/24/2008
11.0 ac p.19-1234
- ㊷ Fannie May Garber
OR.202-583 1/24/2008
11.0 ac p.19-1234
- ㊸ Fannie May Garber
OR.202-583 1/24/2008
11.0 ac p.19-1234
- ㊹ Fannie May Garber
OR.202-583 1/24/2008
11.0 ac p.19-1234
- ㊺ Fannie May Garber
OR.202-583 1/24/2008
11.0 ac p.19-1234
- ㊻ Fannie May Garber
OR.202-583 1/24/2008
11.0 ac p.19-1234
- ㊼ Fannie May Garber
OR.202-583 1/24/2008
11.0 ac p.19-1234
- ㊽ Fannie May Garber
OR.202-583 1/24/2008
11.0 ac p.19-1234
- ㊾ Fannie May Garber
OR.202-583 1/24/2008
11.0 ac p.19-1234
- ㊿ Fannie May Garber
OR.202-583 1/24/2008
11.0 ac p.19-1234

Last Revision: 12/30/2011
T-10, R-4, 3rd. Qtr.
Lots 14,15,16,17,18,19
Paint Twp.
Holmes County, Ohio



LET IT BE KNOWN, THIS MAP HAS BEEN PREPARED AS A REFERENCE GUIDE TO PROPERTY OWNERSHIP. WE BELIEVE THIS INFORMATION TO BE CORRECT AND CURRENT; HOWEVER IT IS NOT INTENDED FOR ANY LEGAL USE, WHETHER IT BE IN SALES, TRANSFERS, TRADES, LEASES OF ANY TYPE, ETC., AND DO NOT ACCEPT RESPONSIBILITY FOR ERRORS OF ANY NATURE OR OMISSIONS CONTAINED HEREIN.

new survey required for next transfer

P-13