

- 1500320000 ① John Allen and Loretta Miller
238-411 3/14/1988
1.0012 ac p.8-822
- 1500410000 ② James G. Tadaro and Alice P. Vardon
264-539 5/23/1994
1.35 ac p.5-111
- 1500412000 ③ Troyer's Guest House, LLC
OR.209-80 2/12/2009
0.539 ac p.5-111
- 0000000000 ④ not used

- 1500890000 ⑥ Paul W. and Esta Yoder
OR.122-747 9/13/2002
0.294 ac p.18-362
- 1500346000 ⑦ Judy A. Miller
OR.13-146 7/21/1998
1.004 ac p.4-84
- 1500289000 ⑧ Freeman A. and Debra K. Miller
205-890 7/30/1979
1.004 ac p.4-84
- 1500616000 ⑨ Wayne R. and Melva Wengard
OR.201-1982 12/18/2007
1.004 ac p.5-166

- 1500358000 ⑬ Wava and Arden and Layden Miller
Regina Herberberger
258-802 2/2/1993
0.936 ac p.7-244

- 1500319000 ⑮ John Allen and Loretta Miller
238-411 3/14/1988
1.96 ac p.7-69
- 1500820000 ⑯ Wayne R. and Melva Wengard
198-214 5/25/1977
214-688 6/30/1981
0.802 ac p.7-486
- 1500640000 ⑰ David Lee and Ina N. Yoder
OR.143-73 3/25/2003
1.0 ac p.4-125
- 1500370000 ⑱ John Allen and Loretta Miller
238-411 3/14/1988
1.9998 ac p.7-228

- 1500292003 ⑲ Katie B. Miller
252-225 7/19/1991
OR.205-2114 7/8/2008
OR.206-3204 9/25/2008
0.49 ac p.19-139
- 1500680005 ⑳ David A. and Rosanna Yoder
OR.122-750 9/13/2002
0.17 ac p.18-383
- 1500414000 ㉑ Lizzie Miller
261-601 9/16/1993
0.1707 ac p.8-788
- 1500414001 ㉒ Amy Sue Miller, trustee
OR.201-547 11/19/2007
0.4191 ac p.11-99
- 1500413001 ㉓ Amy Sue Miller, trustee
OR.201-547 11/19/2007
0.0709 ac p.11-99

- 1500066001 ㉔ Lizzie Miller
261-601 9/16/1993
0.4901 ac p.10-527
- 1500481001 ㉕ Robert H. and Amanda C. Weaver
OR.182-395 7/29/2005
0.374 ac p.3-828
- 1500481000 ㉖ Robert H. and Amanda C. Weaver
OR.182-395 7/29/2005
0.593 ac p.3-828

- 1500680001 ㉚ Wayne and Melva Wengard
244-913 10/5/1989
0.802 ac p.12-309
- 1500399000 ㉛ Jon Jeffrey and Ruby L. Hershberger
OR.53-682 6/13/2000
Miriam C. Miles
OR.53-715 6/14/2000
1.927 ac p.7-640
- 1500617001 ㉜ Mattie Wengard
254-555 3/21/1992
OR.168-671 11/14/2003
1.013 ac p.12-868

- 1500372000 ㉝ John M. Miller, trustee
Tena Miller, trustee
OR.205-2908 7/16/2008
1.098 ac
- 1500372001 ㉞ John M. Miller, trustee
Tena Miller, trustee
OR.205-2908 7/16/2008
0.472 ac

- 1500272000 ㉟ Phyllis E. Miller
168-98 9/23/1968
OR.101-377 1/29/2002
OR.189-3320 2/9/2004
OR.189-3324 2/9/2004
1.0 ac
- 1500482000 ㊱ Robert H. and Amanda C. Weaver
OR.182-395 7/29/2005
1.15 ac

- 1500265001 ㊲ Lizzie Miller
OR.184-2949 11/16/2005
0.376 ac p.19-545

- 1500345000 ㊳ Fermon R. and Linda Miller
271-218 12/8/1995
1.3459 ac p.8-257
- 1500191000 ㊴ John M. and Ruth Wile
249-404 11/9/1990
1.92 ac
- 1500296000 ㊵ Katie B. Miller
252-225 7/19/1991
OR.205-2114 7/8/2008
OR.206-3204 9/25/2008
1.493 ac p.7-250

- 1500837001 ㊶ Mdt William M. and Katie A. Byler
OR.10-103 6/1/1998
1.421 ac p.18-742
- 1500757000 ㊷ Spt William M. and Katie Byler
202-803 7/14/1978
1.62 ac p.6-173
- 0000000000 ㊸ Spt see map

- 1500839000 ㊹ Npt Wayne M. and Mary J. Yoder
239-571 7/1/1988
267-135 12/30/1994
1.0 ac p.4-191
- 1500840000 ㊺ Wayne M. and Mary J. Yoder
239-571 7/1/1988
267-135 12/30/1994
3.0 ac p.4-191

- 1500810000 ㊻ Jacob J. Miller
199-581 9/14/1977
3.0 ac p.1-98
- 1500817001 ㊼ Wpt John M. Miller, trustee and Tena Miller, trustee
OR.205-2908 7/16/2008
3.44 ac p.1-98
- 1500817000 ㊽ Npt John M. Miller, trustee and Tena Miller, trustee
OR.205-2908 7/16/2008
0.97 ac p.1-98

- 1500811000 ㊾ Harry M. and Mary M. Miller
193-581 3/31/1976
243-753 6/13/1989
243-760 6/13/1989
5.55 ac p.1-98
- 1500985000 ㊿ Npt Harry M. and Mary M. Miller
193-581 3/31/1976
243-753 6/13/1989
243-760 6/13/1989
5.8203 ac p.1-98

- 1500813000 ① Spt Dennis R. Byler
OR.71-587 4/6/2001
0.1797 ac p.10-125
- 1500813000 ② Dennis R. Byler
OR.71-587 4/6/2001
3.0072 ac p.10-125

⬡ **Kunzli's Subdivision Lots**
Plat 1-98 Platted 2/25/1868

① owners of lot 1 shown on map

- 1500761001 ③ NEpt Esther R. Frink
OR.212-2418 8/10/2009
0.748 ac p.10-541
- 1500761000 ④ NWpt Steven D. and Leanna W. Yoder
OR.182-50 7/27/2005
0.961 ac p.5-124
- 1500760000 ⑤ Spt Steven D. and Leanna W. Yoder
OR.182-50 7/27/2005
1.4 ac p.4-180
- 0000000000 ⑥ Npt see map

- 1500837001 ③ Mdt William M. and Katie A. Byler
OR.10-103 6/1/1998
1.421 ac p.18-742
- 1500757000 ④ Spt William M. and Katie Byler
202-803 7/14/1978
1.62 ac p.6-173
- 0000000000 ⑤ Spt see map

- 1500839000 ④ Npt Wayne M. and Mary J. Yoder
239-571 7/1/1988
267-135 12/30/1994
1.0 ac p.4-191
- 1500840000 ⑤ Wayne M. and Mary J. Yoder
239-571 7/1/1988
267-135 12/30/1994
3.0 ac p.4-191

- 1500810000 ⑥ Jacob J. Miller
199-581 9/14/1977
3.0 ac p.1-98
- 1500817001 ⑦ Wpt John M. Miller, trustee and Tena Miller, trustee
OR.205-2908 7/16/2008
3.44 ac p.1-98
- 1500817000 ⑧ Npt John M. Miller, trustee and Tena Miller, trustee
OR.205-2908 7/16/2008
0.97 ac p.1-98

- 1500811000 ⑨ Harry M. and Mary M. Miller
193-581 3/31/1976
243-753 6/13/1989
243-760 6/13/1989
5.55 ac p.1-98
- 1500985000 ⑩ Npt Harry M. and Mary M. Miller
193-581 3/31/1976
243-753 6/13/1989
243-760 6/13/1989
5.8203 ac p.1-98

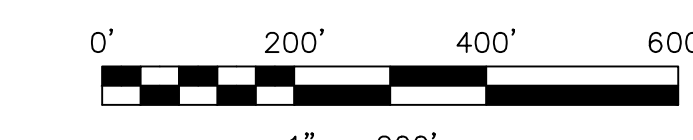
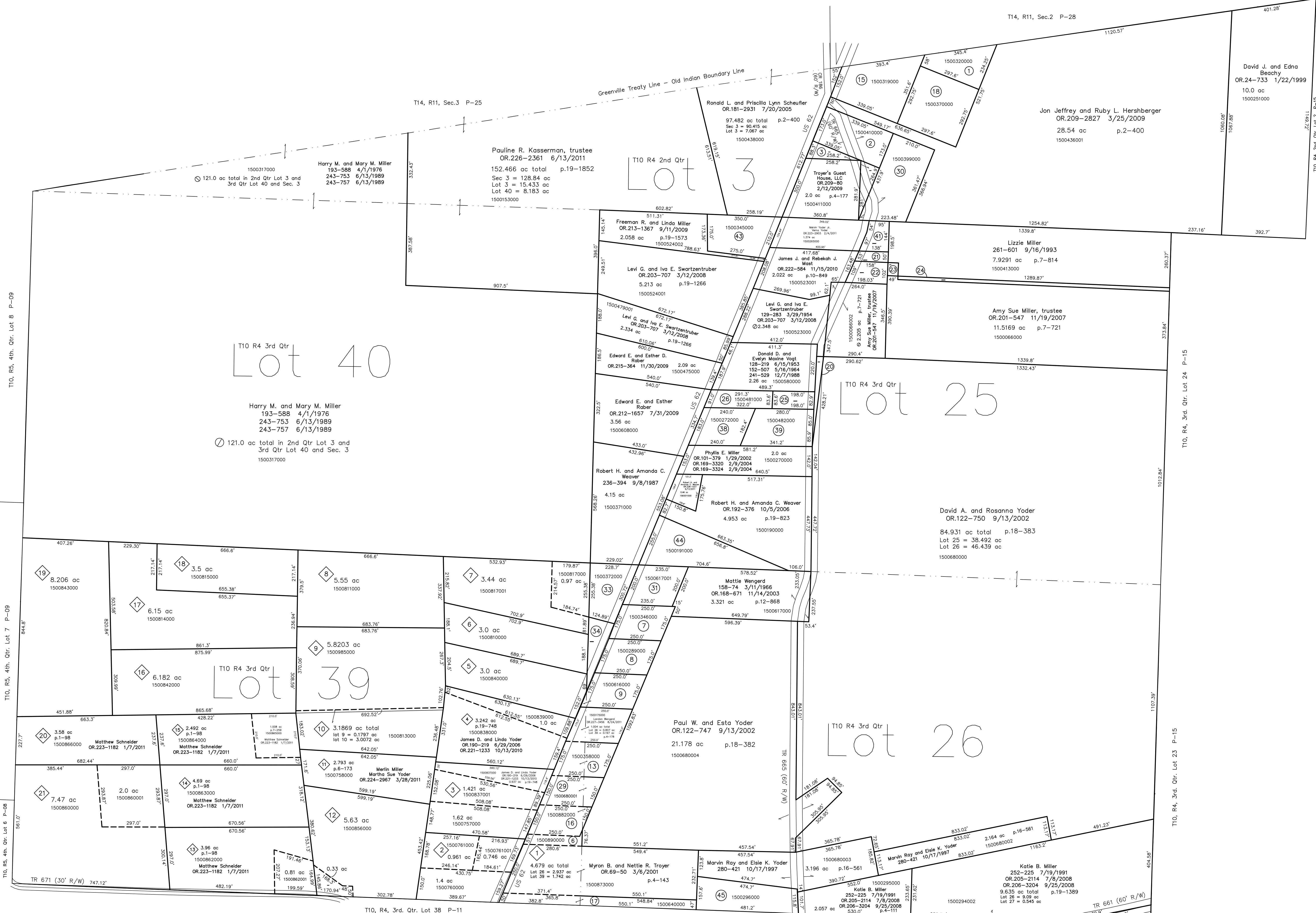
- 1500813000 ⑪ Spt Dennis R. Byler
OR.71-587 4/6/2001
0.1797 ac p.10-125
- 1500813000 ⑫ Dennis R. Byler
OR.71-587 4/6/2001
3.0072 ac p.10-125

- 1500856000 ⑬ Npt Lester C. and Barbara Schlabach
195-8 7/15/1976
238-805 4/21/1988
238-807 4/21/1988
5.63 ac p.4-180
- 1500790000 ⑭ SWpt Robert W. and Ida Mae Starn
249-248 11/2/1990
0.33 ac

- 1500862001 ⑮ SEpt Matthew J. and Andrea J. Schneider
OR.109-485 4/9/2002
0.81 ac p.18-254

- 1500842000 ⑯ Dennis R. Schuefler
OR.178-2704 3/15/2005
OR.178-2709 3/15/2005
6.182 ac p.19-334
- 1500814000 ⑰ Harry M. and Mary M. Miller
193-588 4/1/1976
243-753 6/13/1989
243-760 6/13/1989
6.15 ac p.1-98
- 1500815000 ⑱ Harry M. and Mary M. Miller
193-588 4/1/1976
243-753 6/13/1989
243-760 6/13/1989
3.5 ac p.1-98
- 1500843000 ⑲ Dennis R. Schuefler
OR.178-2704 3/15/2005
OR.178-2709 3/15/2005
8.206 ac p.19-334

- 1500860000 ㉑ Wpt Harold H. Schneider, trustee and Kathy D. Schneider, trustee
OR.204-2945 6/3/2008
0.747 ac p.1-98
- 1500860001 ㉒ NEpt Jason D. and Robyn L. Strong
OR.128-149 10/22/2002
OR.202-2311 2/19/2008
2.0 ac



LET IT BE KNOWN, THIS MAP HAS BEEN PREPARED AS A REFERENCE GUIDE TO PROPERTY OWNERSHIP. WE BELIEVE THIS INFORMATION TO BE CORRECT AND CURRENT, HOWEVER IT IS NOT INTENDED FOR ANY LEGAL USE, WHETHER IT BE IN SALES, TRANSFERS, TRADES, LEASES OF ANY TYPE, ETC., AND DO NOT ACCEPT RESPONSIBILITY FOR ERRORS OF ANY NATURE OR OMISSIONS CONTAINED HEREIN.

① new survey required for next transfer

Last Revision: 9/13/2011

**T-10, R-4,
2nd. Qtr. Lot 3
3rd. Qtr. Lots 25,26,39,40
Paint Twp.
Holmes County, Ohio**

P-12

