

1500046002 Robert L. and Esther R. Coblenz
230-114 3/12/1986
0.555 ac p.10-537

T10, R5, 4th. Qtr. Lot 26 P-05

T10, R5, 4th. Qtr. Lot 19 P-05

1500508000 Jonathan W. Sprunger and Stephen Berg
213-372 6/19/1981
1.105 ac p.7-679

1500484000 Owen L. and Linda O. Coblenz
265-444 8/5/1994
268-979 6/9/1995
1.064 ac p.5-179

1500963000 Jeffery J. and Leah Coblenz
OR.176-2263 11/24/2004
1.322 ac p.7-679

1500467000 Jon M. and Cassie R. Mast
OR.173-541 6/18/2004
1.266 ac p.19-102

1500463001 Jon M. and Cassie R. Mast
OR.173-541 6/18/2004
0.452 ac p.19-102

1500042000 Verna Coblenz
198-166 10/20/1976
259-252 3/23/1993
1.32 ac p.8-679

1500473000 Paul Mark and Beverly Sue Miller
275-666 10/11/1996
OR.13-717 7/31/1998
1.851 ac p.5-149

1500509000 Jonathan W. Sprunger and Stephen Berg
213-372 6/19/1981
1.267 ac p.8-498

1501043000 Junior Swartzentruber, trustee
OR.120-130 8/13/2002
0.602 ac p.9-64

1500474000 Junior Swartzentruber, trustee
OR.120-130 8/13/2002
0.819 ac p.9-64

1500416000 Pleasant View Conservative Mennonite Church
149-445 1/31/1963
0.33 ac p.3-528

1500964001 Conrad G. and Ruth A. Troyer
OR.177-80 12/13/2004
1.059 ac p.12-628

1500415001 Melvin M. and Mary R. Miller
OR.178-1094 2/17/2005
1.358 ac p.19-314

1500944004 Holmes County Board of Commissioners
248-986 10/10/1990
270-164 9/6/1995
1.183 ac p.13-120

1500944017 Allen R. and Ros Anna H. Troyer
OR.185-2048 12/20/2005
0.333 ac p.19-882

1500046005 Robert L. and Esther R. Coblenz
OR.188-3202 5/17/2006
1.775 ac p.19-712

1500964008 Owen L. and Linda O. Coblenz
262-597 12/6/1993
0.336 ac p.14-375

1500519004 Yutz Woodworking, Ltd.
OR.209-3045 3/27/2009
0.16 ac p.14-381

1500473001 Paul J. Miller, trustee 1/2
Anna Miller, trustee 1/2
OR.157-163 7/18/2003
OR.157-166 7/18/2003
0.839 ac p.14-939

1500944009 Holmes County Board of Commissioners
281-489 11/21/1997
1.912 ac p.16-586

1500048001 Fannie Swartzentruber, trustee
OR.215-1887 12/18/2009
0.165 ac p.17-71

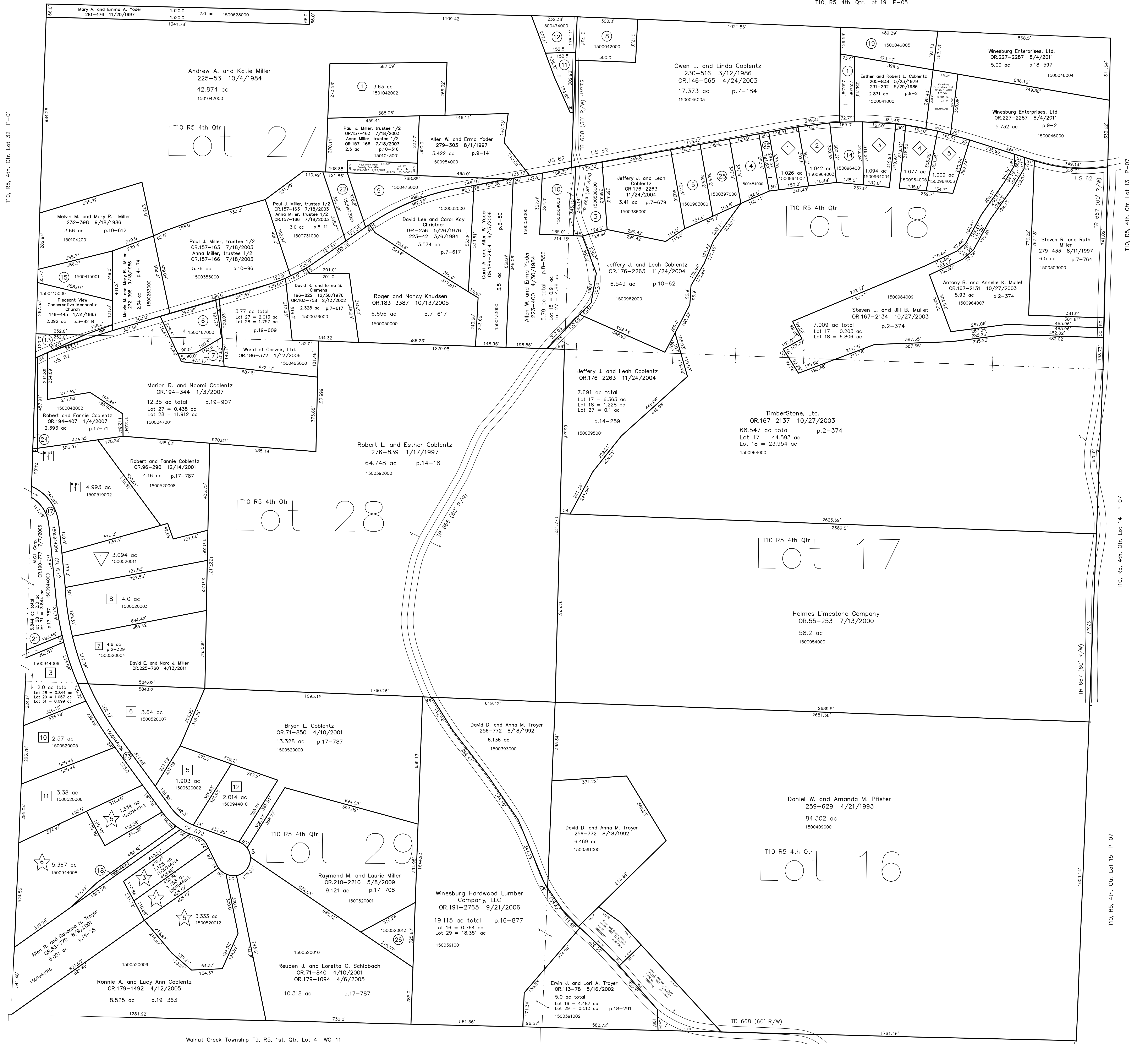
1500397000 Bryan Coblenz
OR.195-788 2/28/2007
1.133 ac p.7-879

1500520013 Reuben J. and Loretta O. Schlabach
OR.209-825 2/24/2009
1.0 ac p.19-1469

T10, R5, 4th. Qtr. Lot 32 P-01

T10, R5, 4th. Qtr. Lot 31 P-01

T10, R5, 4th. Qtr. Lot 30 P-01



T10, R5, 4th. Qtr. Lot 13 P-07

T10, R5, 4th. Qtr. Lot 14 P-07

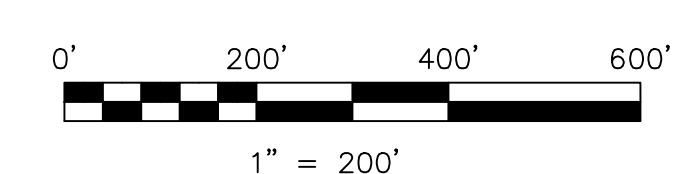
T10, R5, 4th. Qtr. Lot 15 P-07

- Seven Lick Estates
Plat 13-172 Platted 10/16/1992
- 1500964002 Owen L. and Linda O. Coblenz
262-597 12/6/1993
1.026 ac p.13-172
- 1500964003 Karen E. and William E. Roloff
OR.195-568 2/22/2007
1.042 ac p.13-172
- 1500964004 Hal V. and Shannon N. Stutzman
260-531 7/1/1993
1.094 ac p.13-172
- 1500964005 Merlin R. Coblenz
OR.199-721 8/23/2007
1.077 ac p.13-172
- 1500964006 Charles B. Kretzer
OR.199-210 8/17/2007
1.009 ac p.13-172
- Blackberry Acres Subdivision
Plat 18-148 Platted 12/12/2001
- 1500520011 Marlon Ray and Ruby Miller
OR.96-286 12/14/2001
0.394 ac p.18-148
- Coblenz Cove
Plat 18-214 Platted 2/26/2002
- 1501042002 Michael R. and Marie M. Coblenz
OR.87-405 9/14/2001
3.63 ac p.18-214

- Click Estates
Plat 17-866 Platted 5/8/2001
- 1500944014 R & T Miller, Ltd.
OR.170-3190 3/25/2004
1.125 ac p.17-866
- 1500944015 R & T Miller, Ltd.
OR.170-3190 3/25/2004
1.153 ac p.17-866
- Click Estates First Addition
Plat 19-325 Platted 3/8/2005
- 1500520012 R & T Miller, Ltd.
OR.179-2487 4/26/2005
3.333 ac p.19-325
- Click Estates Second Addition
Plat 19-623 Platted 2/3/2006
- 1500944012 James J. and Ina N. Kline
OR.170-2351 3/16/2004
OR.181-1573 3/20/2006
1.334 ac p.19-623
- 1500944008 Edwin and Melonie S. Rober
OR.107-694 3/20/2002
OR.183-1812 9/26/2005
OR.187-1571 3/20/2006
5.367 ac p.19-623

- East Holmes Industrial Park Allotment No.1
Plat 2-224 Platted 11/14/1990
- 1500519002 Spt M.C.I. Corp
OR.170-3190 11/15/1990
4.993 ac p.2-224
- 1500519003 NWpt Fannie Swartzentruber, trustee
OR.215-1887 12/18/2009
0.008 ac p.12-689
- East Holmes Industrial Park Allotment No.3
Plat 13-197 Platted 7/16/1993
- 1500944006 Yutz Woodworking, Ltd.
OR.209-3045 3/27/2009
2.0 ac total p.13-197
Lot 28=0.844 ac, Lot 29=1.057 ac
Lot 31=0.099 ac
- East Holmes Industrial Park Allotment No.5
Plat 2-329 Platted 2/15/2001
- 1500520002 Timberstone Ltd.
OR.88-1 2/20/2001
1.903 ac p.2-329
- 1500520007 Winesburg Hardwood Lumber Company, LLC
OR.191-2765 9/21/2006
3.64 ac p.2-329
- 0000000000 see map
- 1500520003 Al Yoder Estates, Ltd.
OR.104-828 2/22/2002
4.0 ac p.2-329
- 1500520005 Timberstone Ltd.
OR.88-1 2/20/2001
2.57 ac p.2-329
- 1500520006 Homespun Treasures of Walnut Creek, Inc.
OR.70-674 3/27/2001
3.30 ac p.2-329
- 1500944010 Timberstone Ltd.
OR.88-1 2/20/2001
2.014 ac p.2-329

Walnut Creek Township T9, R5, 1st. Qtr. Lot 3 WC-11



LET IT BE KNOWN, THIS MAP HAS BEEN PREPARED AS A REFERENCE GUIDE TO PROPERTY OWNERSHIP. WE BELIEVE THIS INFORMATION TO BE CORRECT AND CURRENT; HOWEVER, IT IS NOT INTENDED FOR ANY LEGAL USE, WHETHER IT BE IN SALES, TRANSFERS, TRADES, LEASES OF ANY TYPE, ETC., AND DO NOT ACCEPT RESPONSIBILITY FOR ERRORS OF ANY NATURE OR OMISSIONS CONTAINED HEREIN.

new survey required for next transfer

Last Revision: 12/19/2011
T-10, R-5, 4th. Qtr.
Lots 16,17,18,27,28,29
Paint Twp.
Holmes County, Ohio

P-04