

- 1500326001 ① Myron J. and Sara Ann Miller  
269-889 8/16/1995  
0.4 ac
- 1500354002 ② Paul A. and Mabel Miller  
180-114 5/12/1971  
0.75 ac
- 0000000000 ③ not used
- 0000000000 ④ not used
- 1500273000 ⑤ Dennis D. and Gladys C. Miller  
209-38 3/14/1980  
231-570 6/19/1986  
1.06 ac p.8-585
- 1500958000 ⑥ Pleasant View Mennonite Church  
218-460 10/7/1982  
0.068 ac p.9-142
- 1500301001 ⑦ Daniel W. Steiner and Harley S. Hochstetler  
OR.176-988 11/6/2004  
1.704 ac p.19-238
- 1560009000 ⑧ Trustees of Amiah Mennonite Conservative Church of the Pleasant View Congregation  
103-461 4/28/1936  
1.23 ac
- 1500417000 ⑨ Pleasant View Conservative Mennonite Church  
1.061 ac 9/17/1984  
p.4-33
- 0000000000 ⑩ not used
- 1500944004 ⑪ Holmes County Board of Commissioners  
248-986 10/10/1990  
270-164 9/6/1995  
0.83 ac p.15-62
- 1500519004 ⑫ Yutzky Woodworking, Ltd.  
OR.209-3045 3/27/2009  
0.075 ac p.14-381
- 1500514006 ⑬ Wayne G. Swartzentruber  
OR.64-203 12/15/2000  
0.83 ac p.16-908
- 1500208001 ⑭ Willis E. Troyer and Mary Yoder  
OR.37-109 8/7/1999  
1.0 ac p.17-192
- 1500961001 ⑮ Melvin M. and Mary R. Miller  
OR.47-187 2/15/2004  
0.333 ac p.17-388
- 0000000000 ⑯ not used
- 1500208003 ⑰ Roy J. and Ida E. Most  
OR.101-216 1/28/2002  
0.436 ac p.18-109
- 1500458001 ⑱ Ben J. and Erma Miller  
OR.134-664 1/8/2003  
0.058 ac p.18-495
- 1500514008 ⑲ Pleasant View Mennonite Church  
OR.178-1092 2/17/2005  
0.819 ac p.19-314
- 1500354001 ⑳ Leroy Jay and Marie Keim  
268-210 10/4/1994  
1.8 ac p.4-622
- 1500738000 ㉑ Holmes Laboratory, Inc.  
OR.19-202 10/29/1998  
1.297 ac p.8-262
- 1500298001 ㉒ Paul J. and Katie J. Miller  
OR.31-337 5/11/1999  
2.0 ac p.1-1000
- 1500353001 ㉓ Mark P. and Malinda Miller  
253-558 11/25/1991  
1.841 ac p.12-799
- 1500299001 ㉔ Jonas E. and Marietta Miller  
252-434 8/7/1991  
2.0 ac p.12-724
- 1500208002 ㉕ Roy J. and Ida E. Most  
OR.35-782 7/26/1999  
1.565 ac p.17-192
- 1500114001 ㉖ David G. Swartzentruber  
OR.50-261 4/10/2000  
1.343 ac p.19-459

Salt Creek Township T10, R5, 3rd, Qtr. Lot 10 SC-09

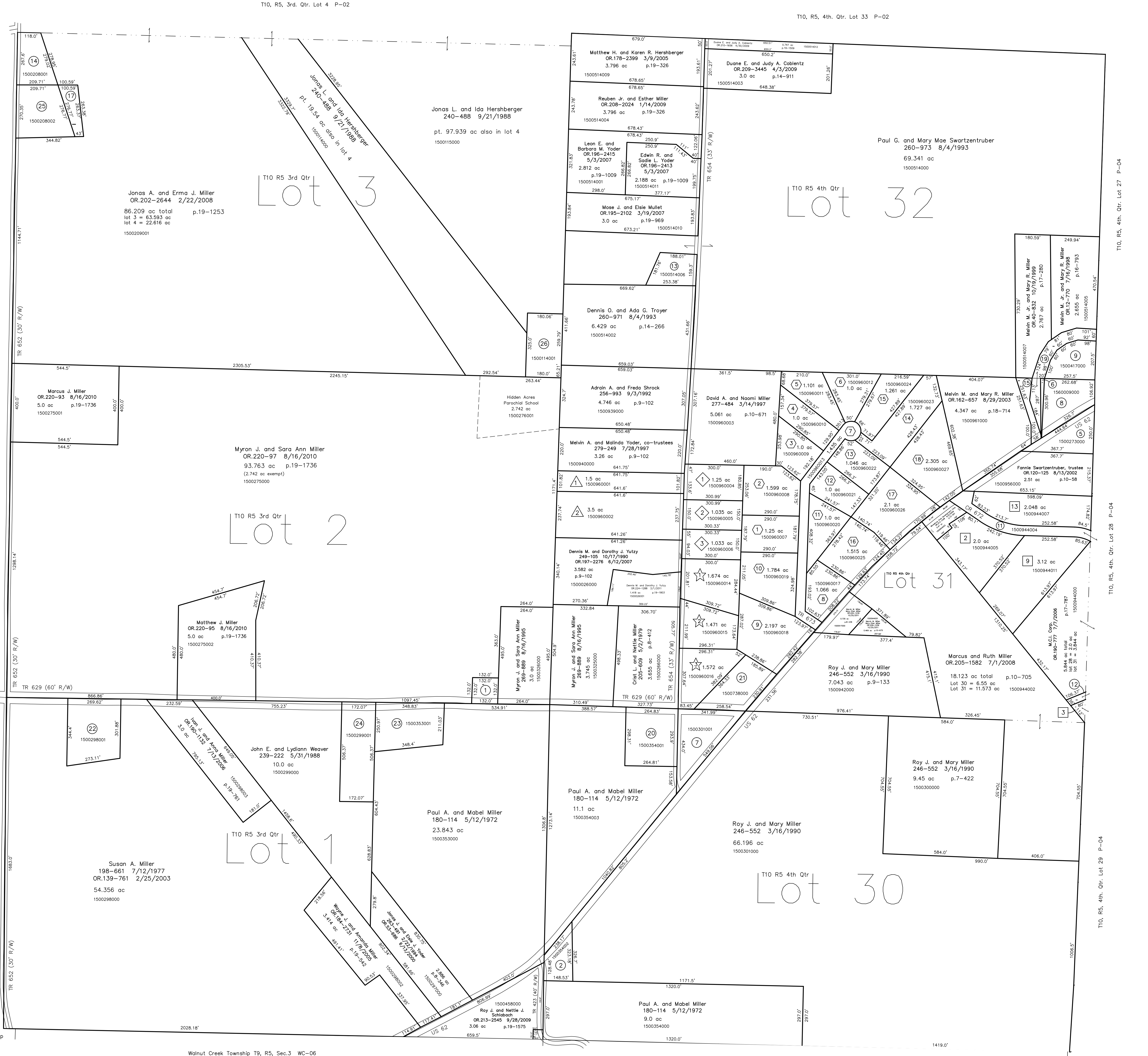
Salt Creek Township T10, R5, 3rd, Qtr. Lot 11 SC-09

Salt Creek Township T10, R5, 3rd, Qtr. Lot 12 SC-09

Berlin Township T9, R5, Sec. 4 B-25

Walnut Creek Township T9, R5, Sec. 3 WC-06

Walnut Creek Township T9, R5, 1st, Qtr. Lot 4 WC-11



- East Holmes Industrial Park Allotment No. 2  
Plat 13-179 Platted 2/2/1993
- 1500944005 ② Quarter Circle L OH Investment LLC  
OR.188-2287 5/8/2006  
2.0 ac p.13-179
- East Holmes Industrial Park Allotment No. 3  
Plat 13-197 Platted 7/16/1993
- 1500944006 ③ Yutzky Woodworking, Ltd.  
OR.209-3045 3/27/2009  
0.099 ac (p.2.0 ac total)
- East Holmes Industrial Park Allotment No. 5  
Plat 2-329 Platted 2/15/2001
- 1500944011 ⑨ Quarter Circle L OH Investment LLC  
OR.188-2287 5/8/2006  
3.12 ac p.2-329
- 1500944007 ⑬ Timberstone Ltd.  
OR.68-1 2/20/2001  
2.048 ac p.2-329
- Swartzentruber Allotment No. 1  
Plat 2-194 Platted 12/12/1986
- 1500960001 ① Edwin D. and Frances K. Troyer  
233-791 12/23/1986  
1.5 ac p.2-194
- 1500960002 ② Marvin A. and Clara M. Troyer  
OR.186-2505 5/4/2007  
3.5 ac p.2-194
- Swartzentruber Allotment No. 2  
Plat 13-131 Platted 4/2/1991
- 1500960004 ④ Olen J. and Mary A. Miller  
280-274 10/10/1997  
1.25 ac p.13-131
- 1500960005 ⑤ Raymond M. and Laurie R. Miller  
OR.82-521 7/25/2001  
1.035 ac p.13-131
- 1500960006 ⑥ Raymond M. and Laurie Miller  
264-628 6/1/1994  
1.035 ac p.13-131
- Swartzentruber Allotment No. 3  
Plat 2-267 Platted 1/3/1997
- 1500960007 ⑦ Mervin M. and Mary Ellen Miller  
277-774 4/9/1997  
1.25 ac p.2-267
- 1500960008 ⑧ Mervin M. and Mary Ellen Miller  
OR.132-301 12/16/2002  
1.035 ac p.13-131
- 1500960009 ⑨ Bruce G. Blanke, trustee  
OR.205-713 6/18/2008  
1.0 ac p.2-267
- 1500960010 ⑩ Bruce G. Blanke, trustee  
OR.205-2191 7/9/2008  
1.0 ac p.2-267
- 1500960011 ⑪ Wayne S. and Mandee K. Schiobach  
OR.209-1074 2/27/2009  
1.101 ac p.2-267
- 1500960012 ⑫ Samuel J. and Sandra K. Stoltzfus  
OR.37-979 8/31/1999  
1.0 ac p.2-267
- 1500960013 ⑬ The Holmes County Board of Commissioners  
OR.187-426 3/3/2006  
OR.183-2220 9/30/2005 p.19-511  
1.435 ac p.2-267
- Swartzentruber Allotment No. 3-First Addition  
Plat 2-428 Platted 5/23/2006
- 1500960017 ⑭ Junior Swartzentruber, trustee  
OR.215-1883 12/18/2009  
1.068 ac p.2-428
- 1500960018 ⑮ Junior Swartzentruber, trustee  
OR.215-1883 12/18/2009  
2.197 ac p.2-428
- 1500960019 ⑯ Junior Swartzentruber, trustee  
OR.215-1883 12/18/2009  
1.784 ac p.2-428
- 1500960020 ⑰ Junior Swartzentruber, trustee  
OR.215-1883 12/18/2009  
1.0 ac p.2-428
- 1500960021 ⑱ Junior Swartzentruber, trustee  
OR.215-1883 12/18/2009  
1.0 ac p.2-428
- 1500960022 ⑲ Theron J. and Betty J. Maloney  
OR.199-557 8/21/2007  
1.046 ac p.2-428
- 1500960023 ⑳ Junior Swartzentruber, trustee  
OR.215-1883 12/18/2009  
1.727 ac p.2-428
- 1500960024 ㉑ Junior Swartzentruber, trustee  
OR.215-1883 12/18/2009  
1.261 ac p.2-428
- Swartzentruber Allotment No. 3-Second Addition  
Plat 2-438 Platted 11/2/2006  
re-recorded Plat 2-454 Platted 12/27/2007
- 1500960025 ⑳ Pleasant View Holdings, LLC  
OR.201-3872 12/31/2007  
1.515 ac p.2-438
- 1500960026 ㉑ Junior Swartzentruber, trustee  
OR.215-1883 12/18/2009  
2.1 ac p.2-438
- 1500960027 ㉒ Junior Swartzentruber, trustee  
OR.215-1883 12/18/2009  
2.309 ac p.2-438
- Swartzentruber Allotment No. 4  
Plat 18-588 Platted 4/14/2003
- 1500960014 ① Raymond M. and Laurie Miller  
OR.147-382 4/30/2003  
1.874 ac p.18-588
- 1500960015 ② Wayne L. and Maryanna M. Weaver  
OR.147-3873 4/30/2003  
1.471 ac p.18-588
- 1500960016 ③ Reuben Jr. and Esther Miller  
OR.148-1673 5/6/2003  
1.572 ac p.18-588

Walnut Creek Township T9, R5, 1st, Qtr. Lot 5 WC-06

Walnut Creek Township T9, R5, 1st, Qtr. Lot 4 WC-11

Last Revision: 10/25/2011

**T-10, R-5,  
3rd. Qtr. Lots 1,2,3  
4th. Qtr. Lots 30,31,32  
Paint Twp.  
Holmes County, Ohio**

**P-01**

0' 200' 400' 600'  
1" = 200'

LET IT BE KNOWN, THIS MAP HAS BEEN PREPARED AS A REFERENCE GUIDE TO PROPERTY OWNERSHIP. WE BELIEVE THIS INFORMATION TO BE CORRECT AND CURRENT; HOWEVER IT IS NOT INTENDED FOR ANY LEGAL USE, WHETHER IT BE IN SALES, TRANSFERS, TRADES, LEASES OR ANY TYPE, ETC. AND DO NOT ACCEPT RESPONSIBILITY FOR ERRORS OF ANY NATURE OR OMISSIONS CONTAINED HEREIN.

new survey required for next transfer