

Crab Apple North Subdivision
Plat 2-435 Platted 11/1/2006

- 1500171001-1 New Morgan Holdings, Ltd.
OR.211-244 5/29/2009
3.5 ac p.2-435
- 1500171002-2 New Morgan Holdings, Ltd.
OR.211-244 5/29/2009
2.17 ac p.2-435
- 1500171003-3 New Morgan Holdings, Ltd.
OR.211-244 5/29/2009
2.17 ac p.2-435
- 1500171004-4 New Morgan Holdings, Ltd.
OR.211-244 5/29/2009
2.8 ac p.2-435
- 1500171005-5 Larry and Rita Keim
OR.198-1331 7/19/2007
2.893 ac p.2-435
- 1500171006-6 Larry and Rita Keim
OR.198-1331 7/19/2007
4.894 ac p.2-435
- 1500171007-7 Edwin E. and Susan Miller
OR.198-1971 7/24/2007
8.988 ac p.2-435
- 1500171008-8 New Morgan Holdings, Ltd.
OR.211-244 5/29/2009
8.494 ac p.2-435
- 9- see map
- 1500171010-10 Dominica M. and Karen J. Palmer
OR.198-1615 7/20/2007
2.23 ac p.2-435
- 1500171011-11 David E. and Ruth E. Miller
OR.198-1618 7/20/2007
4.063 ac p.2-435
- 12- see map
- 13- void replatted
- 14- void replatted

- 1500171015-15 James D. and Ruth A. Mullet
OR.198-1409 7/19/2007
3.67 ac p.2-435
- 1500171017-17 Paul J. and John J. Yoder
OR.204-2552 5/27/2008
2.001 ac p.2-435
- 1500171018-18 Clifford W. Sprang and Melissa F. Miller
OR.198-1338 7/19/2007
2.001 ac p.2-435
- 1500171019-19 Myron R. and Laura R. Yoder
OR.198-1304 7/17/2007
1.095 ac p.2-435
- 1500171020-20 Daniel L. and Frieda Mast
OR.198-1307 7/17/2007
4.56 ac p.2-435
- 1500171021-21 Vernon E. and Elias L. Yoder
OR.214-490 10/16/2009
4.888 ac p.2-435
- 1500171022-22 New Morgan Holdings, Ltd.
OR.211-244 5/29/2009
3.286 ac p.2-435
- 1500171023-23 New Morgan Holdings, Ltd.
OR.211-244 5/29/2009
3.086 ac p.2-435
- 1500171024-24 New Morgan Holdings, Ltd.
OR.211-244 5/29/2009
3.201 ac p.2-435
- 1500171025-25 New Morgan Holdings, Ltd.
OR.211-244 5/29/2009
3.201 ac p.2-435
- 1500171026-26 Matthew L. and Holly C. Johnson
OR.198-1627 7/23/2007
2.042 ac p.2-435
- 1500171027-27 Jonathan L. and Tawnya L. Troyer
OR.198-1983 7/24/2007
2.041 ac p.2-435
- 1500171028-28 The Board of Commissioners of Holmes County, Ohio
OR.198-232 9/17/2007
dedication of TR 674 and TR 675 (res.#09-10-07-1)
OR.200-353 10/5/2007 and p.19-1155
5.678 ac p.2-435
- 1500171029-29 Cornerstone Homes of Winesburg, Inc.
OR.198-2516 7/30/2007
1.563 ac p.19-1005
- 30- see map

Crab Apple North Subdivision Replat of Lots 13 & 14
Plat 19-1640 Platted 2/2/2010

Crab Apple North Subdivision Replat of Lots 12 & 31
Plat 19-1764 Platted 11/9/2010

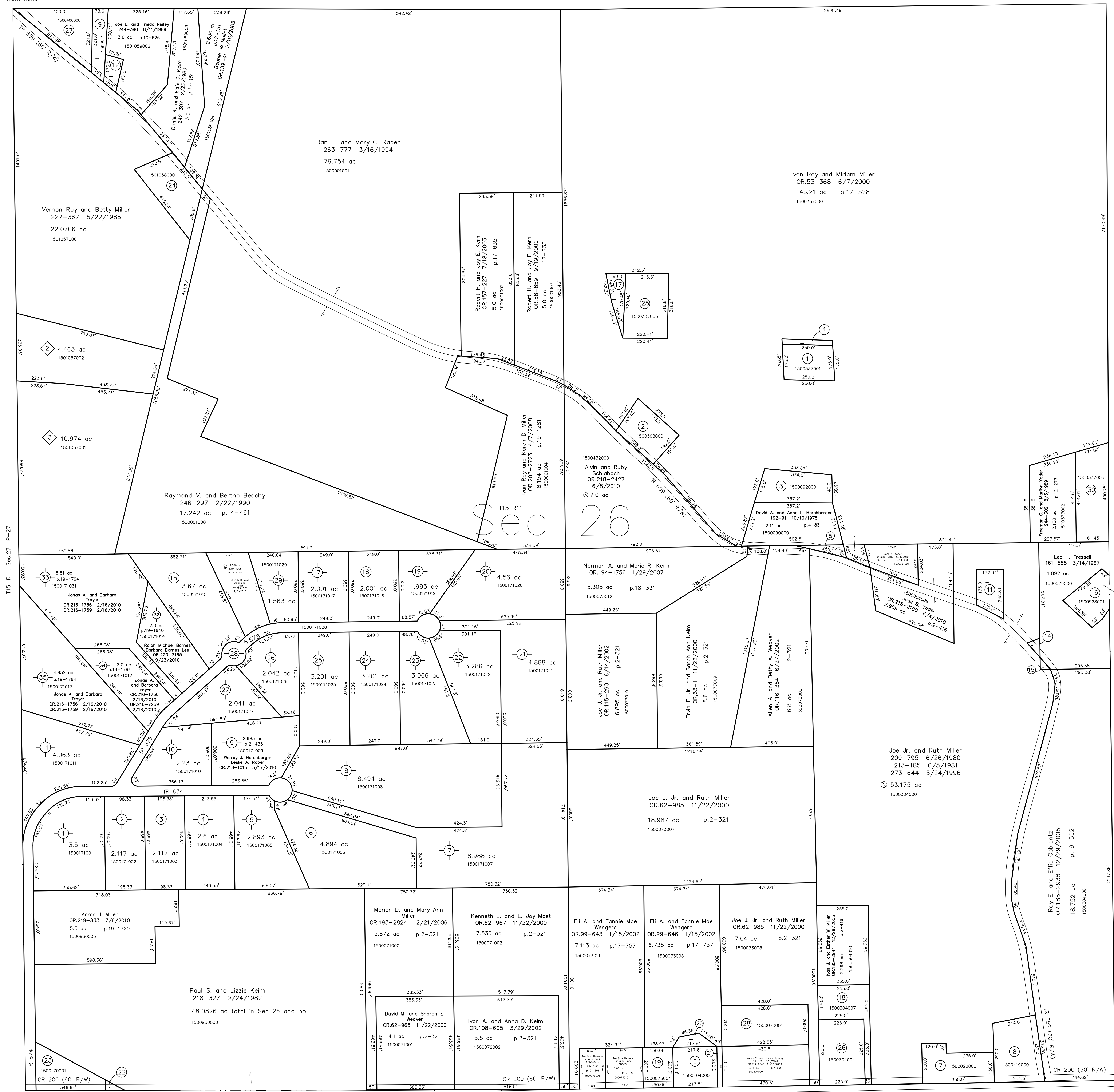
Rabbit Run Subdivision Replat of Lot 1
Plat 2-398 Platted 6/29/2005

- 1500570002-2 James L. and Joanna Miller
OR.182-1598 8/15/2005
4.463 ac p.2-398
- 1500570001-1 Vernon Ray and Betty Miller
OR.182-1595 8/15/2005
10.974 ac p.2-398

- 1500337001-1 Duane R. and Marlene Miller
231-365 6/5/1986
1.003 ac p.10-569
- 1500368000-0 Roy L. and Sue Miller
193-579 3/31/1976
241-170 11/7/1988
1.1482 ac p.7-590
- 1500092000-3 David A. and Anna L. Hershberger
192-91 10/10/1975
241-318 11/21/1988
1.278 ac p.5-69
- 1500337006-4 Duane R. and Marlene Miller
OR.174-131 8/9/2004
0.143 ac p.19-146
- 1500091000-5 David A. and Anna L. Hershberger
192-91 10/10/1975
241-318 11/21/1988
0.14 ac p.4-83
- 1500440000-6 Brenda S. Oswald
207-1 8/10/1979
228-842 9/24/1985
1.0 ac p.8-467
- 1560022000-7 Trustees of the West Belder Amish Parochial School
178-170 10/1/1971
1.36 ac p.5-97
- 1500419000-8 Allen L. and Linda R. Mast
OR.203-502 3/11/2008
1.649 ac p.4-117
- 1501059001-9 Joe E. and Frieda Nisley
232-340 9/1/1986
0.5561 ac p.10-606
- 0000000000-0 not used

Wayne County TR 38
Senff Road

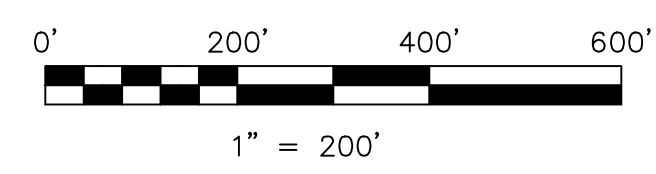
Wayne County, Paint Township T-15, R-11, Sec.23



- 1500340003-11 Joe Jr. and Ruth Miller
OR.43-723 12/13/1999
0.639 ac p.12-885
- 1501059000-12 Lizzie J. Helmuth, trustee
281-810 12/12/1997
0.276 ac p.10-606
- 0000000000-13 not used
- 1500340006-14 Leo Tressell
267-863 3/13/1995
267-867 3/13/1995
0.069 ac p.14-750
- 1500529001-15 Joe Jr. and Ruth Miller
267-865 3/13/1995
0.035 ac p.14-750
- 1500528001-16 David J. and Lori E. Cappillo
267-869 3/13/1995
0.873 ac p.14-761
- 1500337004-17 Aden R. and Laura Miller
OR.33-504 6/17/1999
0.395 ac p.17-139
- 1500340007-18 Ivan J. and Esther W. Miller
OR.54-744 7/3/2000
1.219 ac p.17-346
- 1500073004-19 Timothy Ray and Jacqueline Weaver
OR.60-291 10/12/2000
0.689 ac p.17-658
- 1500073002-20 Brenda S. Hostetler fka Oswald
OR.60-288 10/12/2000
0.217 ac p.17-658

- 1500073003-21 Brenda S. Hostetler fka Oswald
OR.60-288 10/12/2000
0.115 ac p.17-658
- 1500170002-22 Paul S. and Lizzie Keim
OR.18-810 12/12/1997
0.062 ac p.19-739
- 1500170001-23 Donald W. and Anne S. Brown
244-147 7/20/1989
1.189 ac p.19-259
- 1501058000-24 Lizzie J. Helmuth, trustee
281-810 12/12/1997
1.5985 ac p.10-415
- 1500337003-25 Aden R. and Laura Miller
268-712 5/25/1995
1.591 ac p.14-810
- 1500340004-26 Ivan J. and Esther W. Miller
OR.189-3044 6/23/2006
1.679 ac p.14-315
- 1500400000-27 Joe E. and Frieda J. Nisley
209-813 6/27/1980
230-862 6/15/1986
1.474 ac p.8-618
- 1500073001-28 Randy S. and Bonnie Sprang
OR.60-286 10/12/2000
1.967 ac p.17-658
- 0000000000-29 not used
- 1500337005-30 Freeman C. and Marilyn Yoder
OR.53-365 6/7/2000
1.75 ac p.17-528

T-15, R-11, Sec.35 P-29



LET IT BE KNOWN, THIS MAP HAS BEEN PREPARED AS A REFERENCE GUIDE TO PROPERTY OWNERSHIP. WE BELIEVE THIS INFORMATION TO BE CORRECT AND CURRENT, HOWEVER IT IS NOT INTENDED FOR ANY LEGAL USE, WHETHER IT BE IN SALES, TRANSFERS, TRADES, LEASES OF ANY TYPE, ETC., AND DO NOT ACCEPT RESPONSIBILITY FOR ERRORS OF ANY NATURE OR OMISSIONS CONTAINED HEREIN.

new survey required
next transfer

Last Revision: 11/9/2010
T-15, R-11, Sec.26
Paint Twp.
Holmes County, Ohio

P-30

T-15, R-11, Sec.25 P-33