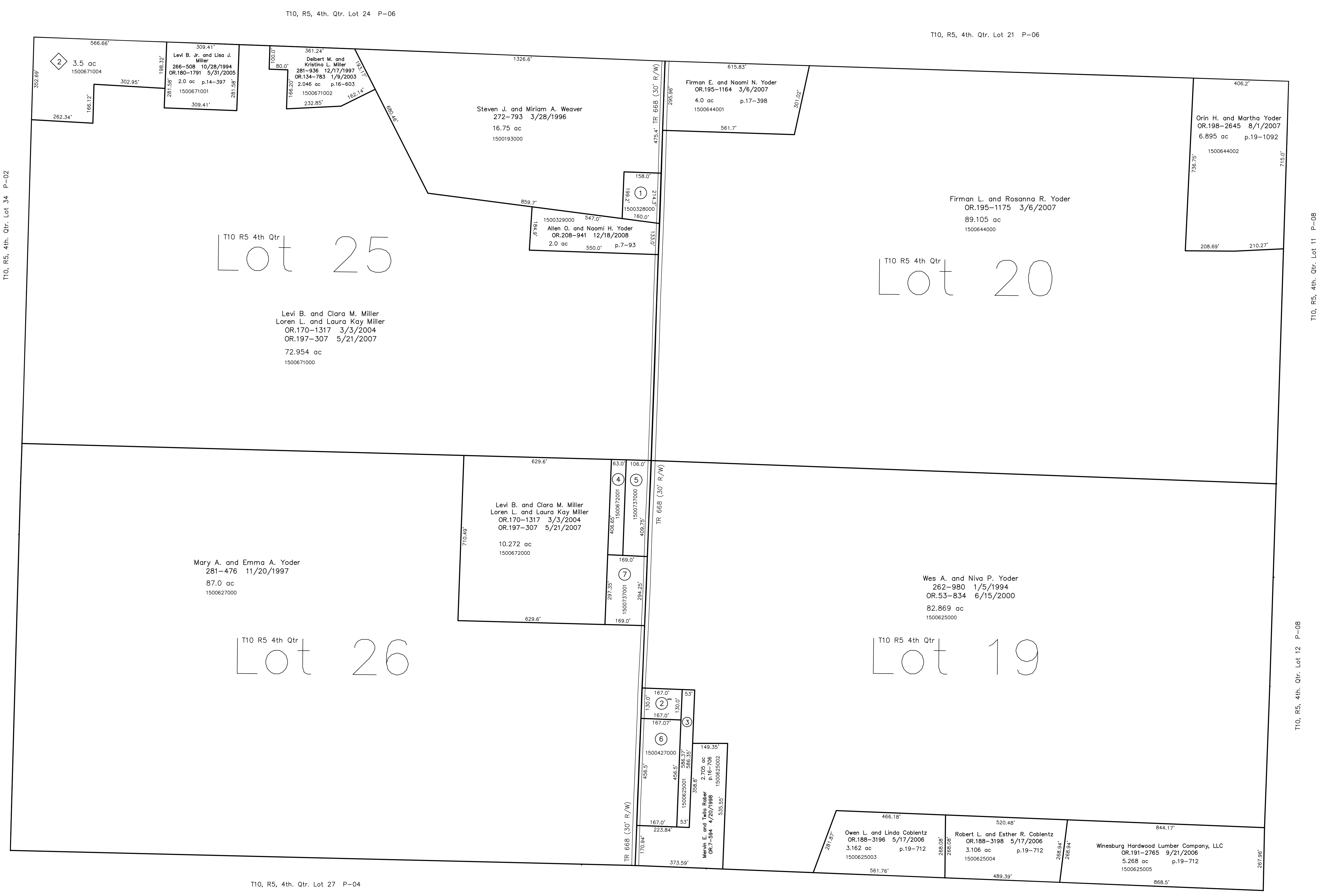
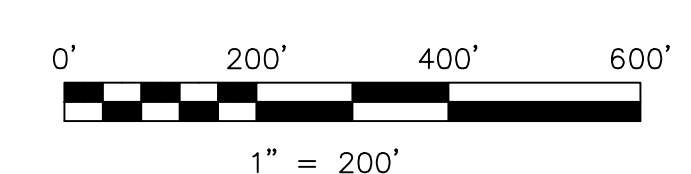


- 1500328000 ① Allen O. and Naomi H. Yoder  
OR.208-941 12/18/2008  
0.75 ac p.7-93
- 1590010000 ② American Telephone and Telegraph Company  
175-151 10/8/1970  
0.42 ac p.5-53
- 1500625001 ③ Mervin E. and Twila Raber  
264-324 5/20/1994  
0.719 ac p.14-514
- 1500672001 ④ Esta D. Fehr  
OR.202-338 1/17/2008  
0.598 ac p.12-749
- 1500737000 ⑤ Esta D. Fehr  
OR.202-338 1/17/2008  
0.392 ac
- 1500427000 ⑥ Mervin E. and Twila Raber  
200-432 11/23/1977  
254-522 5/20/1994  
1.751 ac p.8-112
- 1500737001 ⑦ Nelson R. and Esther C. (Fehr) Troyer  
OR.202-336 1/17/2008  
OR.207-152 10/1/2008  
1.148 ac p.19-1250



◇ Miller's Wooded Acres Subdivision Replat  
 Plat 19-893 Plotted 12/20/2006  
 1500671004 ◇ Loren L. and Laura Kay Miller  
 OR.195-2149 3/19/2007  
 3.5 ac p.19-893



LET IT BE KNOWN, THIS MAP HAS BEEN PREPARED AS A REFERENCE  
 GUIDE TO PROPERTY OWNERSHIP. WE BELIEVE THIS INFORMATION TO  
 BE CORRECT AND CURRENT; HOWEVER IT IS NOT INTENDED FOR ANY  
 LEGAL USE, WHETHER IT BE IN SALES, TRANSFERS, TRADES, LEASES  
 OF ANY TYPE, ETC., AND DO NOT ACCEPT RESPONSIBILITY FOR  
 ERRORS OF ANY NATURE OR OMISSIONS CONTAINED HEREIN.

○ new survey required  
 for next transfer

Last Revision: 12/18/2008  
**T-10, R-5, 4th. Qtr.**  
**Lots 19,20,25,26**  
**Paint Twp.**  
**Holmes County, Ohio**

**P-05**