

- 1500326001 ① Myron J. and Sara Ann Miller
269-889 8/16/1995
0.4 ac
- 1500354002 ② Paul A. and Mabel Miller
180-114 5/12/1971
0.75 ac
- 0000000000 ③ not used
- 0000000000 ④ not used
- 1500273000 ⑤ Dennis D. and Gladys C. Miller
209-38 3/14/1980
231-570 6/19/1986
1.06 ac p.8-585
- 1500958000 ⑥ Pleasant View Mennonite Church
218-460 10/7/1992
0.068 ac p.9-142
- 1500301001 ⑦ Daniel W. Steiner and Harley S. Hochstetler
OR.176-988 11/6/2004
1.704 ac p.19-238
- 1560009000 ⑧ Trustees of Amiah Mennonite Conservative Church of the Pleasant View Congregation
103-461 4/28/1936
1.23 ac
- 1500417000 ⑨ Pleasant View Conservative Mennonite Church
1.061 ac 9/17/1984
p.4-33
- 0000000000 ⑩ not used
- 1500944004 ⑪ Holmes County Board of Commissioners
248-986 10/10/1990
270-164 9/6/1995
0.83 ac p.15-62
- 1500519004 ⑫ Yutzky Woodworking, Ltd.
OR.209-3045 3/27/2009
0.075 ac p.14-381
- 1500514006 ⑬ Wayne G. Swartzentruber
OR.64-203 12/15/2000
0.83 ac p.16-908
- 1500208001 ⑭ Willis E. Troyer and Mary Yoder
OR.37-109 8/7/1999
1.0 ac p.17-192
- 1500961001 ⑮ Melvin M. and Mary R. Miller
OR.47-187 2/15/2000
0.333 ac p.17-388
- 0000000000 ⑯ not used
- 1500208003 ⑰ Roy J. and Ida E. Most
OR.101-216 1/28/2002
0.436 ac p.18-109
- 1500458001 ⑱ Ben J. and Erma Miller
OR.134-664 1/8/2003
0.058 ac p.18-495
- 1500514008 ⑲ Pleasant View Mennonite Church
OR.178-1092 2/17/2005
0.819 ac p.19-314
- 1500354001 ⑳ Leroy Jay and Marie Keim
268-210 10/4/1994
1.8 ac p.4-622
- 1500738000 ㉑ Holmes Laboratory, Inc.
OR.19-202 10/29/1998
1.297 ac p.8-262
- 1500298001 ㉒ Paul J. and Katie J. Miller
OR.31-337 5/11/1999
2.0 ac p.1-1000
- 1500353001 ㉓ Mark P. and Madeline Miller
253-558 11/25/1991
1.841 ac p.12-799
- 1500299001 ㉔ Jonas E. and Marietta Miller
252-434 8/7/1991
2.0 ac p.12-724
- 1500208002 ㉕ Roy J. and Ida E. Most
OR.35-782 7/26/1999
1.565 ac p.17-192
- 1500114001 ㉖ David G. Swartzentruber
OR.50-261 4/10/2000
1.343 ac p.19-459

T10, R5, 3rd. Qtr. Lot 4 P-02

T10, R5, 4th. Qtr. Lot 33 P-02

Soil Creek Township T10, R5, 3rd. Qtr. Lot 10 SC-09

Soil Creek Township T10, R5, 3rd. Qtr. Lot 11 SC-09

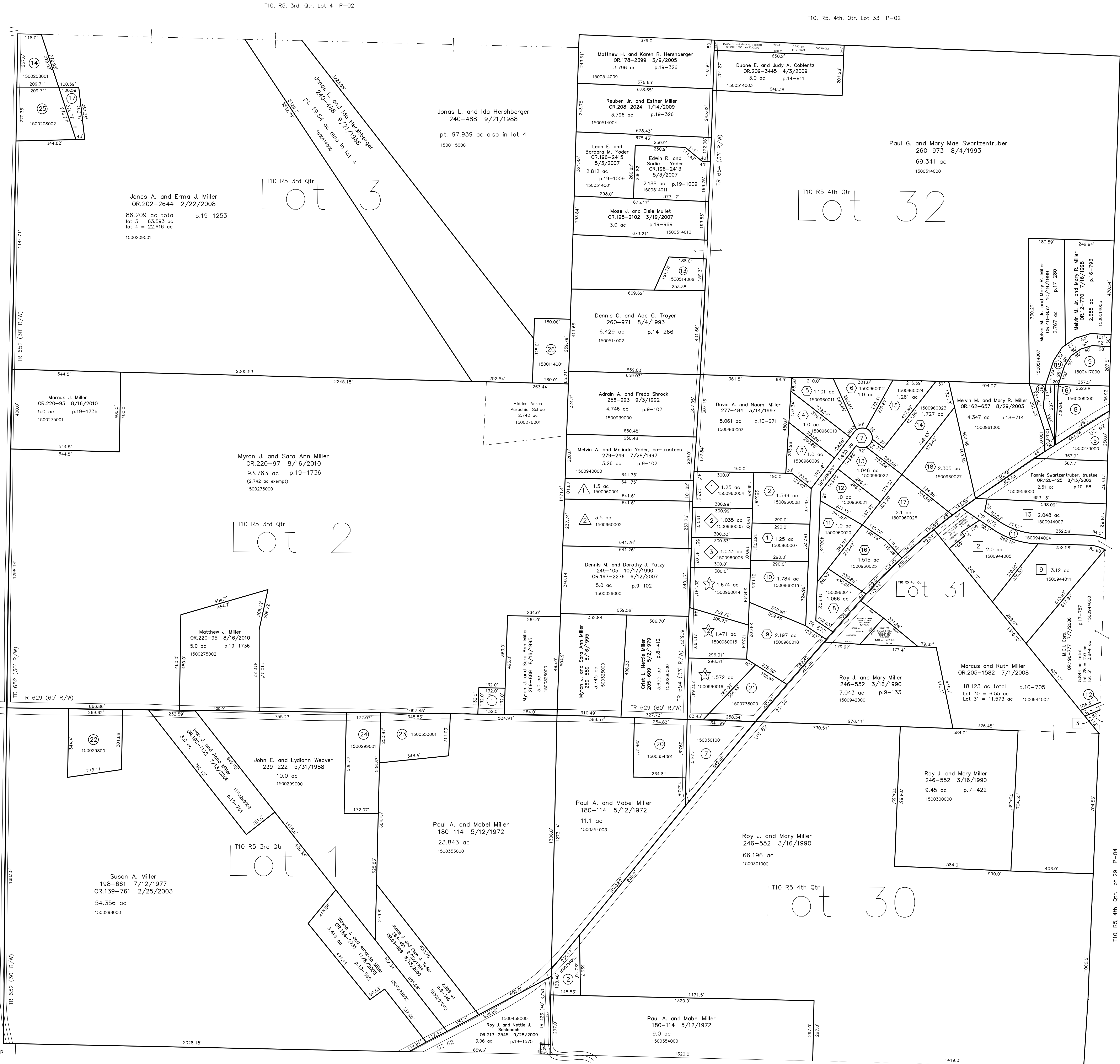
Soil Creek Township T10, R5, 3rd. Qtr. Lot 12 SC-09

Berlin Township T9, R5, Sec. 4 B-25

Walnut Creek Township T9, R5, Sec. 3 WC-06

Walnut Creek Township T9, R5, 1st. Qtr. Lot 5 WC-06

Walnut Creek Township T9, R5, 1st. Qtr. Lot 4 WC-11

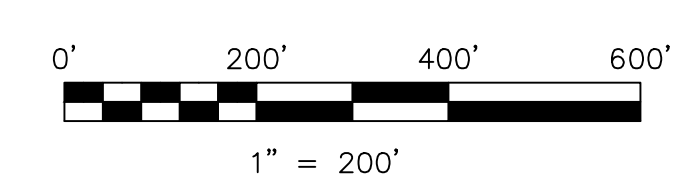


- East Holmes Industrial Park Allotment No. 2
Plat 13-179 Platted 2/2/1993
- 1500944005 ② Quarter Circle L OH Investment LLC
OR.188-2287 5/8/2006
2.0 ac p.13-179
- East Holmes Industrial Park Allotment No. 3
Plat 13-197 Platted 7/16/1993
- 1500944006 ③ Yutzky Woodworking, Ltd.
OR.209-3045 3/27/2009
0.099 ac (p.13-197)
- East Holmes Industrial Park Allotment No. 5
Plat 2-329 Platted 2/15/2001
- 1500944011 ⑨ Quarter Circle L OH Investment LLC
OR.188-2287 5/8/2006
3.12 ac p.2-329
- 1500944007 ⑬ Timberstone Ltd.
OR.68-1 2/20/2001
2.048 ac p.2-329
- Swartzentruber Allotment No. 1
Plat 2-194 Platted 12/12/1986
- 1500960001 ① Edwin D. and Frances K. Troyer
233-791 12/23/1986
1.5 ac p.2-194
- 1500960002 ② Marvin A. and Clara M. Troyer
OR.186-2505 5/4/2007
3.5 ac p.2-194

- Swartzentruber Allotment No. 2
Plat 13-131 Platted 4/2/1991
- 1500960004 ④ Olen J. and Mary A. Miller
280-274 10/10/1997
1.25 ac p.13-131
- 1500960005 ⑤ Raymond M. and Laurie R. Miller
OR.82-521 7/25/2001
1.035 ac p.13-131
- 1500960006 ⑥ Raymond M. and Laurie Miller
264-628 6/1/1994
1.035 ac p.13-131
- Swartzentruber Allotment No. 3
Plat 2-267 Platted 1/3/1997
- 1500960007 ⑦ Mervin M. and Mary Ellen Miller
277-774 4/9/1997
1.25 ac p.2-267
- 1500960008 ⑧ Mervin M. and Mary Ellen Miller
OR.132-301 12/16/2002
1.035 ac p.2-267
- 1500960009 ⑨ Bruce G. Blanke, trustee
OR.205-713 6/18/2008
1.0 ac p.2-267
- 1500960010 ⑩ Bruce G. Blanke, trustee
OR.205-2191 7/9/2008
1.0 ac p.2-267
- 1500960011 ⑪ Wayne S. and Mandee K. Schiobach
OR.209-1074 2/27/2009
1.101 ac p.2-267
- 1500960012 ⑫ Samuel J. and Sandra K. Stoltzfus
OR.37-979 8/31/1999
1.0 ac p.2-267
- 1500960013 ⑬ The Holmes County Board of Commissioners
OR.187-426 3/3/2006
OR.183-2220 9/30/2005 p.19-511
1.435 ac p.2-267

- Swartzentruber Allotment No. 3-First Addition
Plat 2-428 Platted 5/23/2006
- 1500960017 ⑭ Junior Swartzentruber, trustee
OR.215-1883 12/18/2009
1.068 ac p.2-428
- 1500960018 ⑮ Junior Swartzentruber, trustee
OR.215-1883 12/18/2009
2.197 ac p.2-428
- 1500960019 ⑯ Junior Swartzentruber, trustee
OR.215-1883 12/18/2009
1.784 ac p.2-428
- 1500960020 ⑰ Junior Swartzentruber, trustee
OR.215-1883 12/18/2009
1.0 ac p.2-428
- 1500960021 ⑱ Junior Swartzentruber, trustee
OR.215-1883 12/18/2009
1.0 ac p.2-428
- 1500960022 ⑲ Theron J. and Betty J. Maloney
OR.199-557 8/21/2007
1.046 ac p.2-428
- 1500960023 ⑳ Junior Swartzentruber, trustee
OR.215-1883 12/18/2009
1.727 ac p.2-428
- 1500960024 ㉑ Junior Swartzentruber, trustee
OR.215-1883 12/18/2009
1.261 ac p.2-428
- Swartzentruber Allotment No. 3-Second Addition
Plat 2-438 Platted 11/2/2006
re-recorded Plat 2-454 Platted 12/27/2007
- 1500960025 ⑳ Pleasant View Holdings, LLC
OR.201-3872 12/31/2007
1.515 ac p.2-438
- 1500960026 ㉑ Junior Swartzentruber, trustee
OR.215-1883 12/18/2009
2.1 ac p.2-438
- 1500960027 ㉒ Junior Swartzentruber, trustee
OR.215-1883 12/18/2009
2.309 ac p.2-438

- Swartzentruber Allotment No. 4
Plat 18-588 Platted 4/14/2003
- 1500960014 ① Raymond M. and Laurie Miller
OR.147-382 4/30/2003
1.471 ac p.18-588
- 1500960015 ② Wayne L. and Maryanna M. Weaver
OR.147-3873 4/30/2003
1.471 ac p.18-588
- 1500960016 ③ Reuben Jr. and Esther Miller
OR.148-1673 5/6/2003
1.572 ac p.18-588



new survey required for next transfer

Last Revision: 8/16/2010
**T-10, R-5,
 3rd. Qtr. Lots 1,2,3
 4th. Qtr. Lots 30,31,32
 Paint Twp.
 Holmes County, Ohio**

P-01