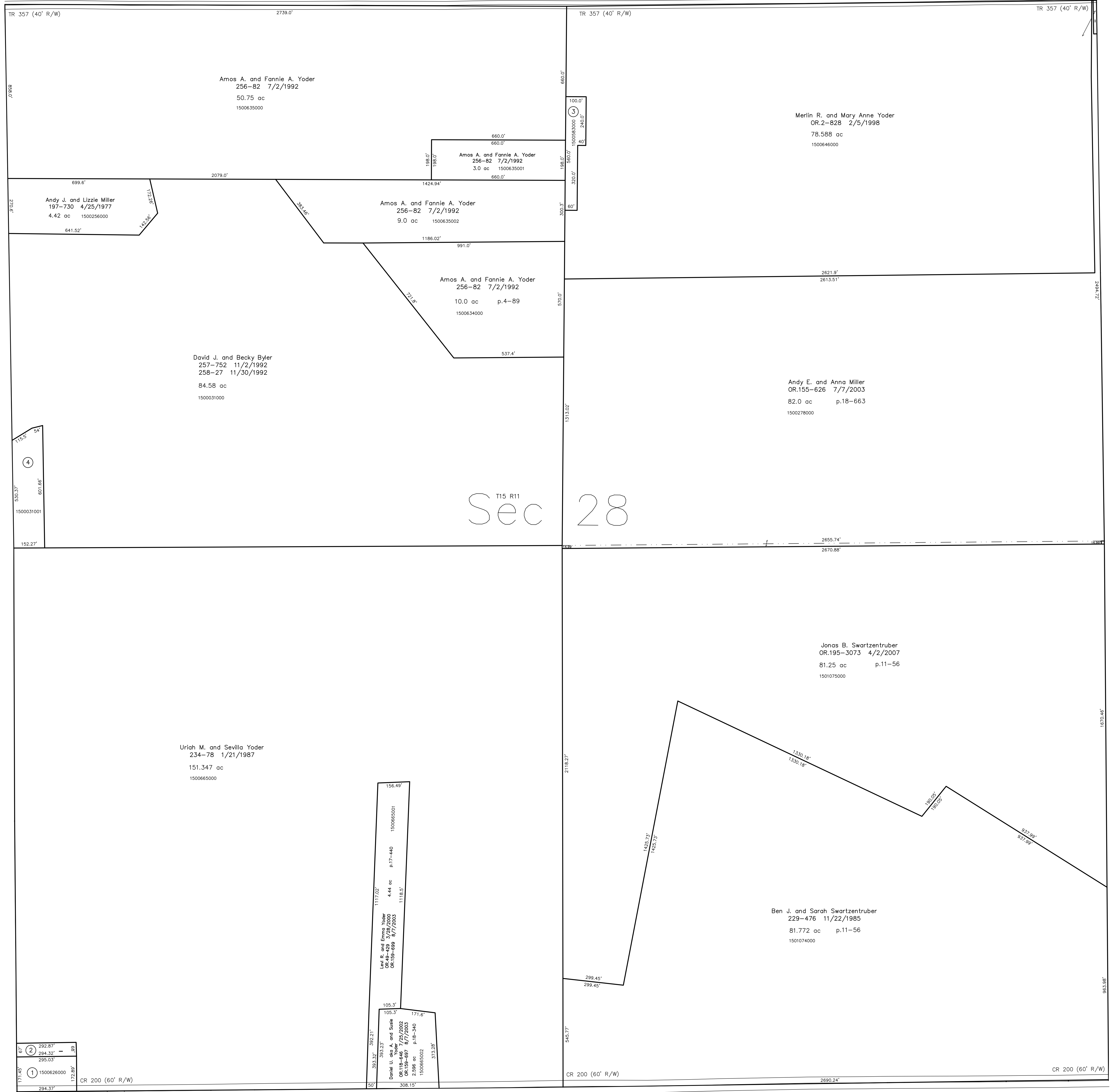


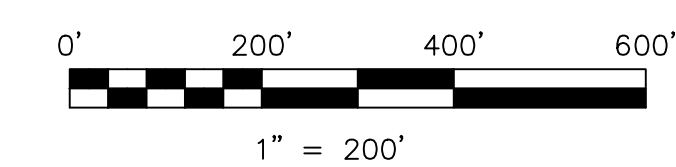
- 1500626000 ① Roy A. and Mae P. Yoder  
OR 193-2040 7/25/2006  
OR 193-490 11/17/2006  
1.16 ac p.7-198
- 150065003 ② Roy A. and Mae P. Yoder  
OR 193-2040 7/25/2006  
OR 193-490 11/17/2006  
0.457 ac p.19-150
- 1500583000 ③ Alvin D. and Laura Weaver  
208-282 12/27/1979  
0.992 ac p.8-545
- 1500031001 ④ Jonas A. and Edna L. Yoder  
268-339 4/27/1995  
2.0 ac p.14-788



T15, R11, Sec.29 P-21

T15, R11, Sec.27 P-27

T-15, R-11, Sec.33 P-23



LET IT BE KNOWN, THIS MAP HAS BEEN PREPARED AS A REFERENCE GUIDE TO PROPERTY OWNERSHIP. WE BELIEVE THIS INFORMATION TO BE CORRECT AND CURRENT, HOWEVER IT IS NOT INTENDED FOR ANY LEGAL USE, WHETHER IT BE IN SALES, TRANSFERS, TRADES, LEASES OF ANY TYPE, ETC. AND DO NOT ACCEPT RESPONSIBILITY FOR ERRORS OF ANY NATURE OR OMISSIONS CONTAINED HEREIN.

⊖ new survey required  
for next transfer

Last Revision: 4/2/2007  
**T-15, R-11, Sec.28**  
**Paint Twp.**  
**Holmes County, Ohio**

# P-24

