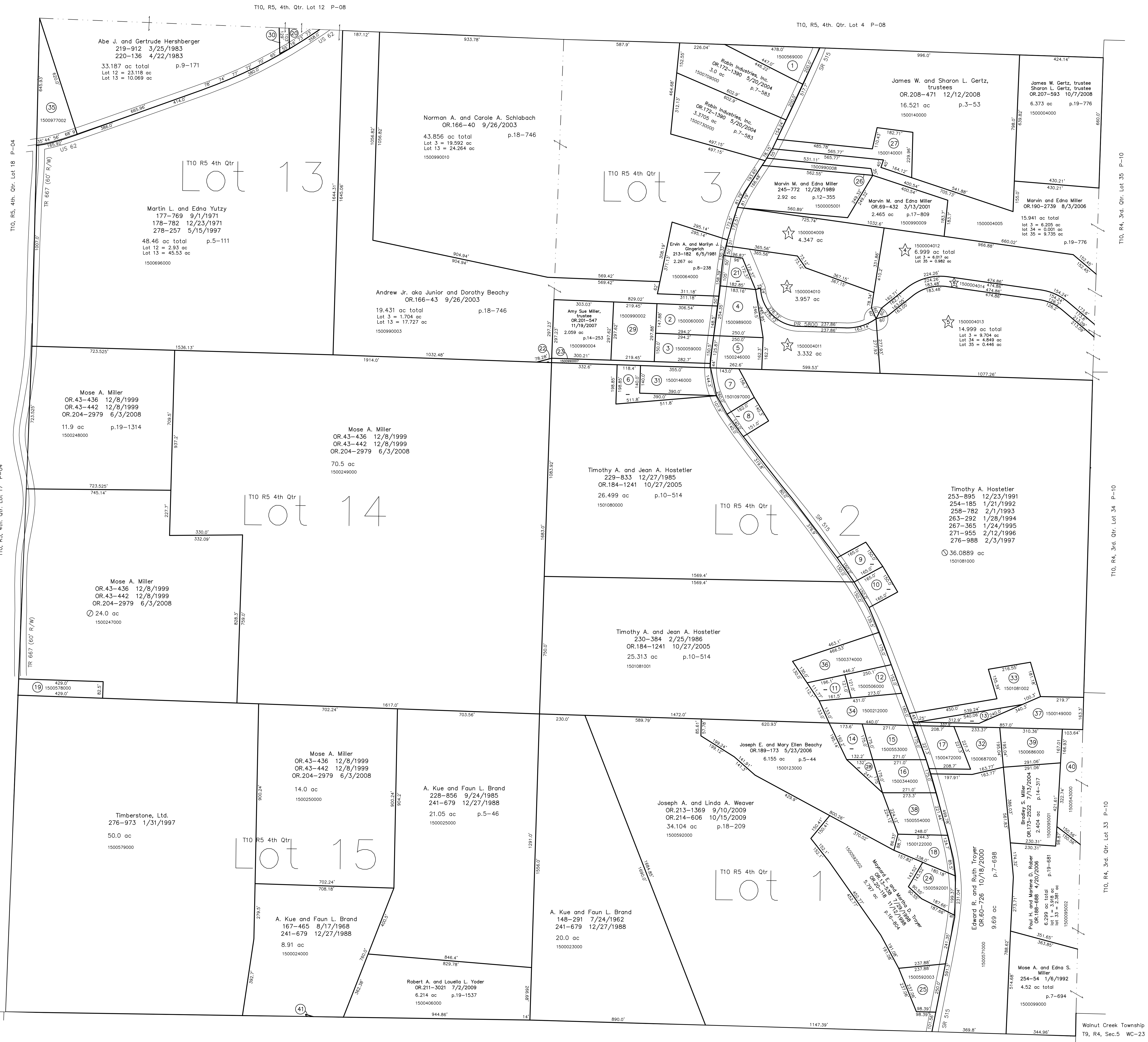


- 1500569000 ① Delores J. Troyer, trustee
OR.63-863 12/12/2000
1.026 ac p.2-112
- 1500060000 ② Richard and Dorothy Gerber
185-774 12/14/1973
1.02 ac p.7-174
- 1500059000 ③ Richard N. and Dorothy Gerber
151-57 8/28/1963
158-121 3/18/1966
1.0 ac p.4-5
- 1500989000 ④ Abe A. and Daria M. Miller
221-38 7/21/1983
OR.206-1754 8/29/2008
1.23 ac p.10-162
- 1500246000 ⑤ Mose A. Miller
OR.43-436 12/8/1999
OR.43-442 12/8/1999
OR.204-2979 6/3/2008
1.005 ac p.7-760
- 1500147000 ⑥ Timothy A. and Jean A. Hostetler
213-40 5/20/1981
OR.184-1241 10/27/2005
0.7241 ac p.5-173
- 1501097000 ⑦ Loren and Mary Hostetler
127-496 2/2/1953
150-572 3/18/1955
0.71 ac
- 1500145000 ⑧ Mary Hostetler
143-120 5/7/1960
0.5 ac
- 1500144000 ⑨ Timothy A. Hostetler
OR.190-2697 8/3/2006
OR.190-2699 8/3/2006
0.56 ac
- 1500135000 ⑩ Timothy A. Hostetler
OR.190-2694 8/3/2006
0.57 ac
- 1500211000 ⑪ John E. and Ruth Ann Ware, co-trustees
OR.205-318 6/6/2008
0.455 ac p.8-143
- 1500506000 ⑫ Stanley and Roberta Sommers
148-89 5/28/1962
OR.169-503 12/30/2003
0.8 ac
- 1500150000 ⑬ Elmer J. and Shirley M. Rober
241-334 11/22/1988
0.364 ac p.8-142
- 1500552000 ⑭ June I. Troyer
150-58 4/4/1963
208-571 5/29/1980
0.58 ac p.8-142
- 1500553000 ⑮ June Troyer
127-136 8/28/1952
208-571 5/29/1980
1.0 ac
- 1500344000 ⑯ Malcolm D. and Sandra L. Miller
197-829 5/6/1977
0.8 ac p.3-34
- 1500472000 ⑰ Johnny Schneider
OR.196-804 4/17/2007
OR.196-806 4/17/2007
1.0 ac
- 1500122000 ⑱ Joseph E. and Mary Ellen Beachy
OR.189-173 5/23/2006
0.906 ac p.3-51
- 1500578000 ⑲ Timberstone, Ltd.
276-973 1/31/1997
1.0 ac
- 1500997000 ⑳ Amy Sue Miller, trustee
OR.201-547 1/19/2007
0.192 ac p.8-210
- 1500990001 ㉑ Abe A. and Daria M. Miller
245-593 12/8/1989
0.492 ac p.12-345
- 1500990006 ㉒ Mose A. Miller
OR.43-440 12/8/1999
OR.204-2979 6/3/2008
0.019 ac p.14-473
- 1500990007 ㉓ Mose A. Miller
OR.43-440 12/8/1999
OR.204-2979 6/3/2008
0.41 ac p.14-473
- 1500592001 ㉔ Maynard E. and Martha Troyer
OR.69-911 3/19/2001
0.89 ac p.16-804
- 1500592003 ㉕ Ray Alan and Laura Weaver
OR.68-318 2/23/2001
0.898 ac p.17-790
- 1500990008 ㉖ Marvin M. and Edna Miller
OR.69-432 3/13/2001
0.447 ac p.17-809
- 1500140001 ㉗ Christopher J. and Kristina K. Gertz
OR.64-315 8/13/2001
1.479 ac p.18-46
- 1500123001 ㉘ Malcolm D. and Sandra L. Miller
OR.153-263 6/17/2003
0.255 ac p.18-446
- 1500990002 ㉙ Amy Sue Miller, trustee
OR.201-547 1/19/2007
1.5 ac p.12-946
- 1500977001 ㉚ Dwayne R. and Marlene R. Kline
OR.184-764 10/21/2005
0.134 ac p.19-529
- 1500146000 ㉛ Timothy A. and Jean A. Hostetler
188-519 1/2/1975
OR.184-1241 10/27/2005
1.187 ac p.7-579
- 1500687000 ㉜ Paul A. and Barbara Ann Miller
265-260 7/18/1994
1.22 ac p.7-105
- 1501081002 ㉝ Jerry A. and Judith A. Rober
OR.190-2703 8/5/2006
1.5 ac p.19-775
- 1500212000 ㉞ John E. and Ruth Ann Ware, co-trustees
OR.205-318 6/6/2008
0.144 ac
- 1500977002 ㉟ Minesburg Hardwood Lumber Co.
OR.194-1573 1/24/2007
1.538 ac p.19-924
- 1500374000 ㊱ Verba A. Miller
200-856 1/19/1978
1.553 ac p.8-143
- 1500149000 ㊲ Elmer J. and Shirley M. Rober
241-334 11/22/1988
1.666 ac p.7-749
- 1500544000 ㊳ Nathan P. and Melissa R. Jones
OR.117-186 7/9/2002
1.26 ac p.4-179
- 1500686000 ㊴ Paul A. and Barbara Ann Miller
265-260 7/18/1994
1.25 ac p.7-181
- 1500543000 ㊵ Christena M. Yoder
278-849 6/13/1997
1.389 ac p.15-136
- 0000000000 ㊶ Robert A. and Louella L. Yoder
OR.211-3021 7/2/2009
0.005 ac p.19-1537



Walnut Creek Township
T9, R5, 1st. Qtr. Lot 3 WC-11

Walnut Creek Township T9, R5, 1st. Qtr. Lot 2 WC-17

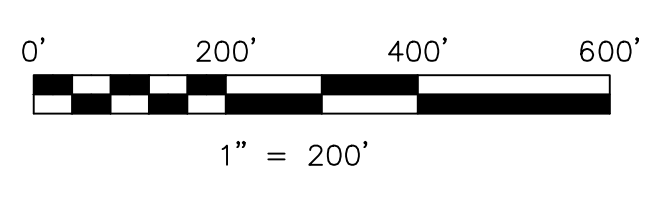
Walnut Creek Township T9, R5, 1st. Qtr. Lot 1 WC-17

Walnut Creek Township
T9, R4, Sec.5 WC-23

Deer Trace Subdivision
Plat 2-450 Platted 9/18/2007

- 150004009 ① Robert H. and Mary E. Klinger
OR.205-2483 11/1/2007
4.347 ac p.2-450
- 150004010 ② Eaton Realty, Ltd.
OR.205-2293 7/10/2008
3.957 ac p.2-450
- 150004011 ③ James L. Miller
OR.205-1386 6/27/2008
3.332 ac p.2-450
- 150004012 ④ Eaton Realty, Ltd.
OR.201-1580 12/11/2007
6.999 ac total p.2-450
- 150004013 ⑤ Eaton Realty, Ltd.
OR.201-1580 12/11/2007
14.999 ac total p.2-450
- 150004014 ⑥ Jonathan J. Yoder
OR.206-1327 8/25/2008
16.996 ac total p.2-450

Last Revision: 10/15/2009
**T-10, R-5, 4th. Qtr.
Lots 1,2,3,13,14,15
Paint Twp.
Holmes County, Ohio**



LET IT BE KNOWN, THIS MAP HAS BEEN PREPARED AS A REFERENCE GUIDE TO PROPERTY OWNERSHIP. WE BELIEVE THIS INFORMATION TO BE CORRECT AND CURRENT; HOWEVER IT IS NOT INTENDED FOR ANY LEGAL USE, WHETHER IT BE IN SALES, TRANSFERS, TRADES, LEASES OF ANY TYPE, ETC., AND DO NOT ACCEPT RESPONSIBILITY FOR ERRORS OF ANY NATURE OR OMISSIONS CONTAINED HEREIN.

⊙ new survey required
⊙ next transfer

P-07