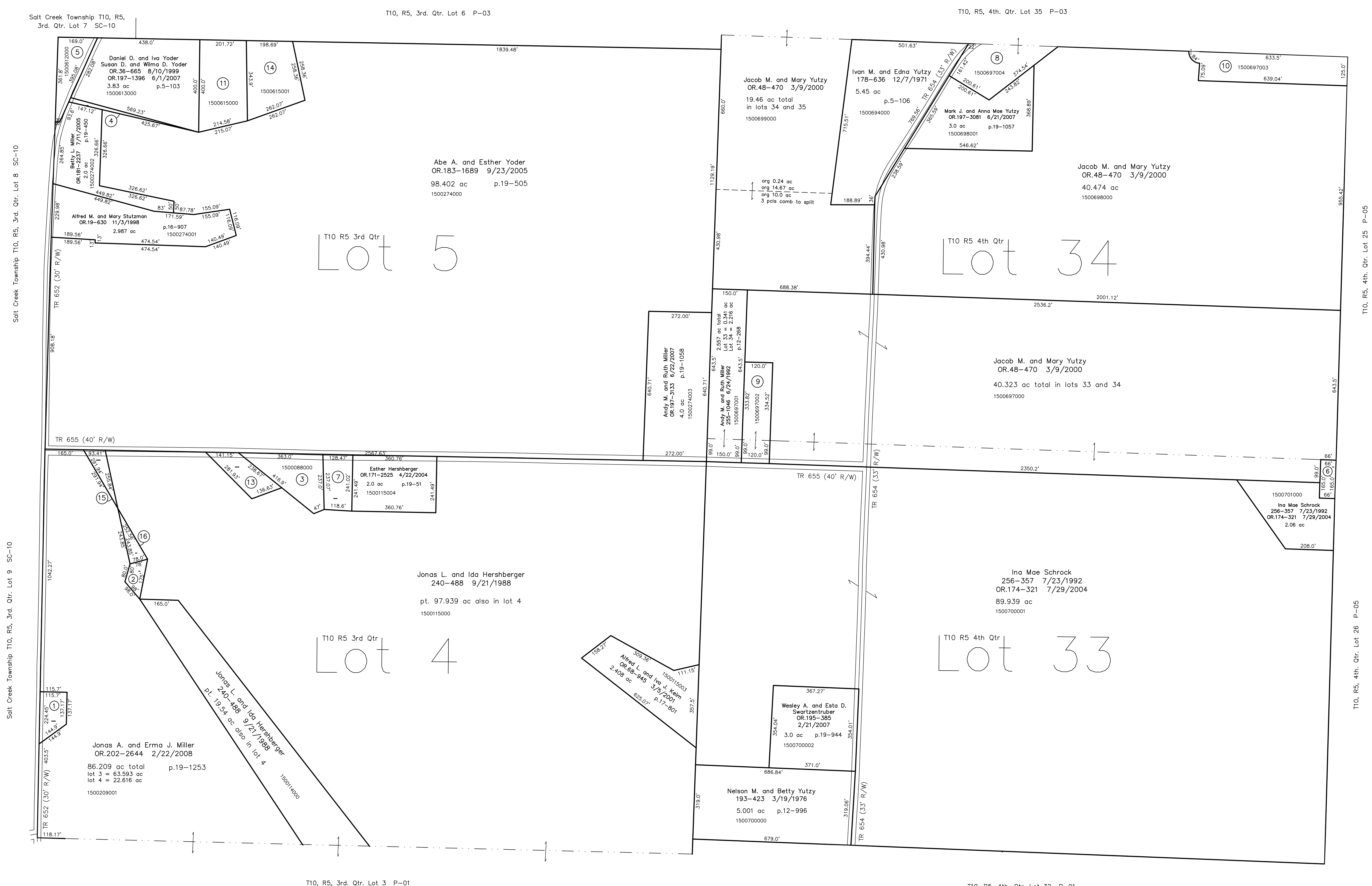


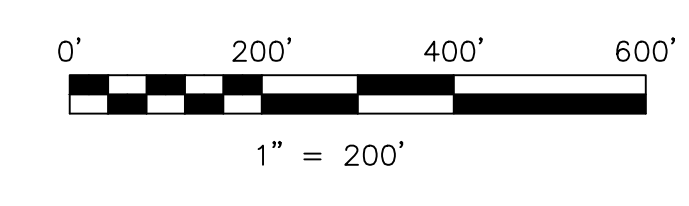
- 1500659000 ① Lizzie J. and Katie J. Yoder
OR.136-891 1/29/2003
0.48 ac p.3-47
- 1500116000 ② Jonas L. and Ida Hershberger
240-488 9/21/1988
0.2 ac
- 1500088000 ③ Esther Hershberger
209-707 8/18/1980
233-755 12/22/1986
1.88 ac p.8-813
- 1500614000 ④ Daniel O. and Iva Yoder
Susan D. and Wima D. Yoder
OR.35-665 8/10/1999
OR.197-1396 6/1/2007
3.83 ac p.5-103
- 1500612000 ⑤ Andy J. and Lena Weaver
278-888 9/11/1997
0.83 ac p.5-103
- 1501094000 ⑥ James Ramoap?
26-245 2/19/1864
0.25 ac
- 1500115001 ⑦ Esther Hershberger
239-496 6/27/1988
0.677 ac p.12-21
- 1500697004 ⑧ Reuben Jr. and Esther Miller
OR.47-766 2/24/2000
1.426 ac p.17-402
- 1500697002 ⑨ Andy M. and Ruth Miller
OR.37-370 8/23/1999
1.193 ac p.17-213
- 1500697003 ⑩ Reuben Jr. and Esther Miller
OR.47-766 2/24/2000
1.87 ac p.17-402
- 1500615000 ⑪ Daniel O. and Iva Yoder
Susan D. and Wima D. Yoder
OR.35-665 8/10/1999
OR.197-1396 6/1/2007
3.83 ac p.5-103
- 0000000000 ⑫ not used



Last Revision: 2/22/2008

**T-10, R-5,
3rd. Qtr. Lots 4,5
4th. Qtr. Lots 33,34
Paint Twp.
Holmes County, Ohio**

P-02



LET IT BE KNOWN, THIS MAP HAS BEEN PREPARED AS A REFERENCE GUIDE TO PROPERTY OWNERSHIP. WE BELIEVE THIS INFORMATION TO BE CORRECT AND CURRENT; HOWEVER IT IS NOT INTENDED FOR ANY LEGAL USE, WHETHER IT BE IN SALES, TRANSFERS, TRADES, LEASES OF ANY TYPE, ETC. AND DO NOT ACCEPT RESPONSIBILITY FOR ERRORS OF ANY NATURE OR OMISSIONS CONTAINED HEREIN.

⊙ new survey required for next transfer