

Crab Apple North Subdivision  
Plat 2-435 Platted 11/1/2006

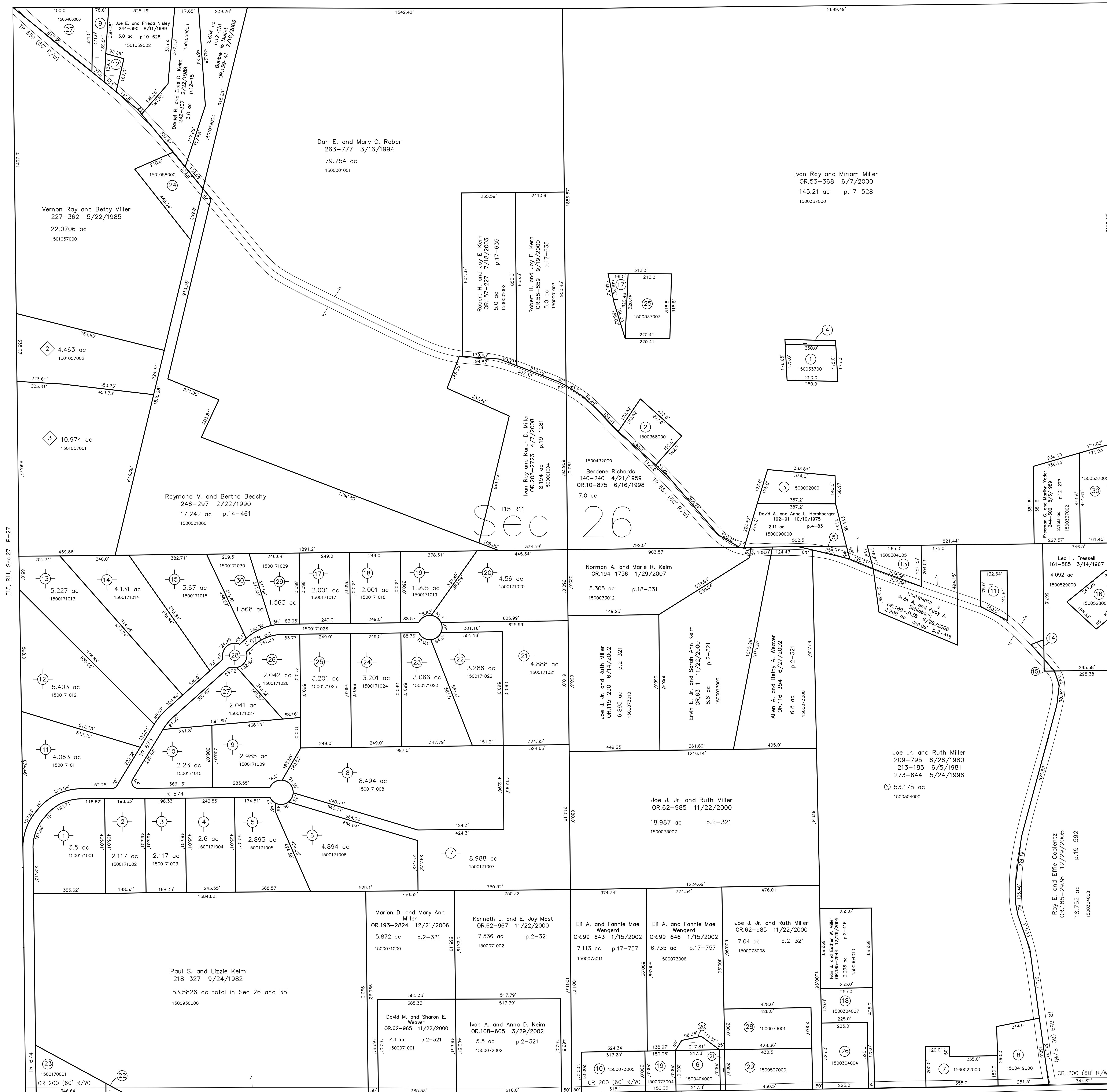
- 1500171001 Dwin and Elsie Schlabach OR.198-2728 8/2/2007 3.3 ac p.2-435
- 1500171002 Dwin and Elsie Schlabach OR.198-2728 8/2/2007 2.117 ac p.2-435
- 1500171003 Dwin and Elsie Schlabach OR.198-2728 8/2/2007 2.117 ac p.2-435
- 1500171004 Dwin and Elsie Schlabach OR.198-2728 8/2/2007 2.6 ac p.2-435
- 1500171005 Larry and Rita Keim OR.198-1331 7/19/2007 2.893 ac p.2-435
- 1500171006 Larry and Rita Keim OR.198-1331 7/19/2007 4.894 ac p.2-435
- 1500171007 Edwin E. and Susan Miller OR.198-1971 7/24/2007 8.988 ac p.2-435
- 1500171008 Dwin and Elsie Schlabach OR.198-2728 8/2/2007 8.494 ac p.2-435
- 1500171009 River Oak Investments, LLC OR.198-1974 7/24/2007 2.985 ac p.2-435
- 1500171010 Dominic M. and Karen J. Palmer OR.198-1615 7/20/2007 2.23 ac p.2-435
- 1500171011 David E. and Ruth E. Miller OR.198-1618 7/20/2007 4.063 ac p.2-435
- 1500171012 J. Jeffrey and Ruby L. Hershberger OR.198-1328 7/18/2007 5.403 ac p.2-435
- 1500171013 David M. Miller OR.198-1977 7/24/2007 5.227 ac p.2-435
- 1500171014 Steven M. Miller OR.198-1980 7/24/2007 4.131 ac p.2-435
- 1500171015 James D. and Ruth A. Mullet OR.198-1409 7/19/2007 3.87 ac p.2-435
- 1500171017 Paul J. and John J. Yoder OR.204-2552 5/27/2008 2.001 ac p.2-435
- 1500171018 Clifford W. Sprang and Melissa F. Miller OR.198-1338 7/18/2007 2.001 ac p.2-435
- 1500171019 Myron R. and Laura R. Yoder OR.198-1304 7/17/2007 1.995 ac p.2-435
- 1500171020 Daniel L. and Frieda Most OR.198-1307 7/17/2007 4.56 ac p.2-435
- 1500171021 Freeman A. Miller OR.198-2163 7/25/2007 4.888 ac p.2-435
- 1500171022 Dwin and Elsie Schlabach OR.198-2728 8/2/2007 3.066 ac p.2-435
- 1500171024 Dwin and Elsie Schlabach OR.198-2728 8/2/2007 3.201 ac p.2-435
- 1500171025 Dwin and Elsie Schlabach OR.198-2728 8/2/2007 3.201 ac p.2-435
- 1500171026 Matthew L. and Holly C. Johnson OR.198-1627 7/20/2007 2.042 ac p.2-435
- 1500171027 Jonathan L. and Tammy L. Troyer OR.198-1983 7/24/2007 2.041 ac p.2-435
- 1500171028 The Board of Commissioners of Holmes County, Ohio OR.199-292 8/17/2007 dedication of TR 674 and TR 675 (res. 609-10-07-1) OR.200-353 10/3/2007 and p.19-1155 5.679 ac p.2-435
- 1500171029 Cornerstone Homes of Winesburg, Inc. OR.198-2516 7/30/2007 1.563 ac p.19-1205
- 1500171030 Mark A. and Meredith Priestap OR.202-1361 2/4/2008 1.568 ac p.19-1205

Rabbit Run Subdivision Replat of Lot 1  
Plat 2-398 Platted 6/29/2005

- 150157002 James L. and Joanna Miller OR.182-1598 8/15/2005 4.463 ac p.2-398
- 150157007 Vernon Ray and Betty Miller OR.182-1595 8/15/2005 10.974 ac p.2-398

Wayne County TR 38  
Senff Road

Wayne County, Paint Township T-15, R-11, Sec.23

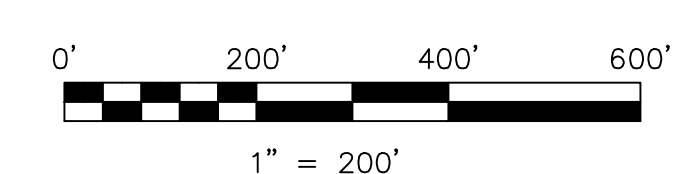


- 1500337001 Duane R. and Marlene Miller OR.231-365 6/5/1986 1.003 ac p.10-569
- 1500368000 Roy L. and Sue Miller OR.323-579 3/31/1976 241-170 11/7/1988 1.482 ac p.7-590
- 1500092000 David A. and Anna L. Hershberger OR.192-91 10/10/1975 241-318 11/21/1988 1.278 ac p.5-69
- 1500337006 Duane R. and Marlene Miller OR.174-1131 8/9/2004 0.143 ac p.19-146
- 1500091000 David A. and Anna L. Hershberger OR.192-91 10/10/1975 241-318 11/21/1988 0.14 ac p.4-93
- 1500404000 Brenda S. Oswald OR.207-1 8/10/1979 228-842 9/24/1985 1.0 ac p.8-467
- 1560022000 Trustees of the West Beidler Amish Parochial School OR.178-170 10/7/1971 1.36 ac p.5-97
- 1500419000 Allen L. and Linda R. Mast OR.203-502 3/11/2008 1.849 ac p.4-117
- 1501059001 Joe E. and Frieda Nisley OR.232-340 9/11/1986 0.5561 ac p.10-606
- 1500073005 Lester W. and Marjorie Herman OR.60-283 10/12/2000 1.443 ac p.17-658

- 1500304003 Joe Jr. and Ruth Miller OR.43-723 12/13/1999 0.639 ac p.12-885
- 1501059000 Lizzie J. Helmuth, trustee OR.189-3044 8/23/2006 0.276 ac p.10-606
- 1500304005 Alvin A. and Ruby A. Schlabach OR.189-3138 6/26/2006 0.9 ac p.14-606
- 1500304006 Leo Tressell OR.267-863 3/13/1995 267-867 3/13/1995 0.069 ac p.14-760
- 1500529001 Joe Jr. and Ruth Miller Mark I. and Linda I. Weaver OR.267-865 3/13/1995 0.035 ac p.14-760
- 1500528001 David J. and Lori E. Cappillo OR.267-869 3/13/1995 0.873 ac p.14-761
- 1500337004 Aden R. and Laura Miller OR.33-504 6/17/1999 0.395 ac p.17-139
- 1500304007 Ivan J. and Esther W. Miller OR.54-744 7/3/2000 1.219 ac p.17-546
- 1500073004 Timothy Ray and Jacqueline Weaver OR.60-291 10/12/2000 0.689 ac p.17-658
- 1500073002 Brenda S. Hostetler fka Oswald OR.60-288 10/12/2000 0.217 ac p.17-658

- 1500073003 Brenda S. Hostetler fka Oswald OR.60-288 10/12/2000 0.115 ac p.17-658
- 1500170002 Paul S. and Lizzie Keim OR.189-3044 8/23/2006 0.062 ac p.19-739
- 1500170001 Donald W. and Anne S. Brown OR.244-147 7/20/1989 1.189 ac p.12-259
- 1501058000 Lizzie J. Helmuth, trustee OR.281-810 12/12/1997 1.5985 ac p.10-415
- 1500337003 Aden R. and Laura Miller OR.68-712 5/25/1995 1.591 ac p.14-810
- 1500304004 Ivan J. and Esther W. Miller OR.261-801 10/1/1993 1.879 ac p.14-315
- 1500400000 Joe E. and Freda J. Nisley OR.209-813 6/27/1980 230-892 4/15/1986 1.474 ac p.8-618
- 1500073001 Randy S. and Bonnie Sprang OR.60-288 10/12/2000 1.967 ac p.17-658
- 1500073004 Randy S. and Bonnie Sprang OR.194-329 6/2/1976 1.975 ac p.7-625
- 1500337005 Freeman C. and Marjyn Yoder OR.63-365 6/7/2000 1.76 ac p.17-658

T-15, R-11, Sec.35 P-29



LET IT BE KNOWN, THIS MAP HAS BEEN PREPARED AS A REFERENCE GUIDE TO PROPERTY OWNERSHIP. WE BELIEVE THIS INFORMATION TO BE CORRECT AND CURRENT; HOWEVER IT IS NOT INTENDED FOR ANY LEGAL USE, WHETHER IT BE IN SALES, TRANSFERS, TRADES, LEASES OF ANY TYPE, ETC., AND DO NOT ACCEPT RESPONSIBILITY FOR ERRORS OF ANY NATURE OR OMISSIONS CONTAINED HEREIN.

new survey required for next transfer

Last Revision: 5/27/2008  
**T-15, R-11, Sec.26**  
**Paint Twp.**  
**Holmes County, Ohio**  
**P-30**