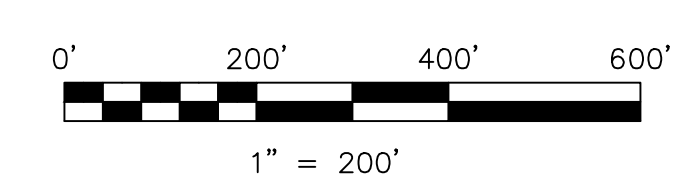
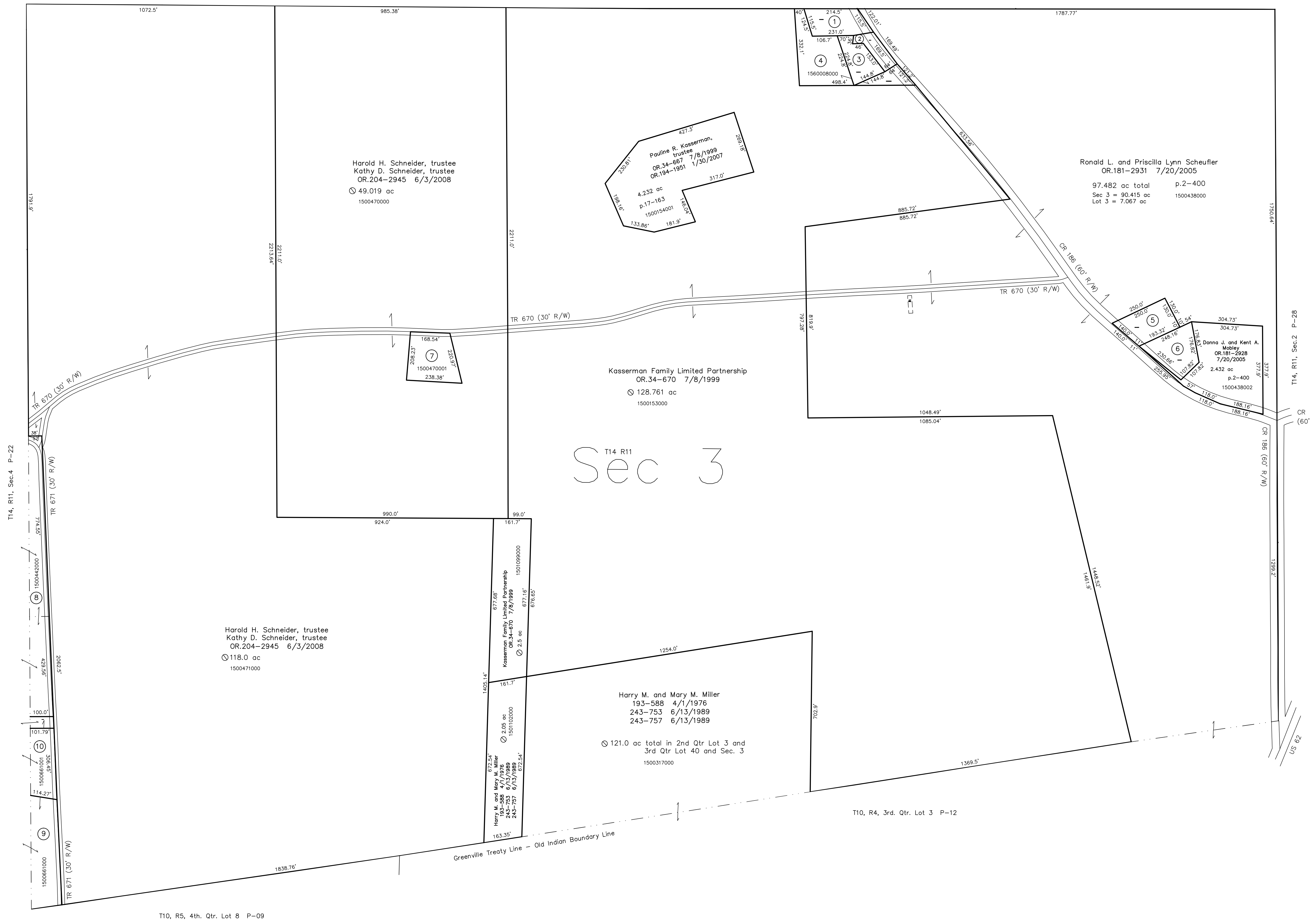


- 1501098000 ① burying ground?
5-471 6/17/1839
0.62 ac
- 1560007001 ② Trustees Mennonite Church
56-98 1890
0.51 ac
- 1560007000 ③ Trustees Longenecker Mennonite Church
136-500 1/17/1958
0.5 ac p.3-1
- 1560008000 ④ Trustees Longenecker Mennonite Church
161-319 1/17/1967
1.377 ac p.4-127
- 1500439000 ⑤ Donna J. and Kent A. Mobley
OR.181-2928 7/20/2005
0.707 ac p.2-400
- 1500438001 ⑥ Kent A. and Donna J. Mobley
274-124 6/28/1996
OR.65-16 1/2/2001
0.771 ac p.16-87
- 1500470001 ⑦ Jamie L. and Angela R. Herman
OR.149-737 5/19/2003
0.981 ac p.18-922
- 1500442000 ⑧ Dennis R. Scheufler
OR.178-2704 3/15/2005
OR.178-2709 3/15/2005
2.168 ac p.19-333
- 1500661000 ⑨ Levi M. and Edna A. Yoder
191-199 7/8/1975
pt. 21.955 ac also in Sec 4
- 1500661001 ⑩ Myron L. and Betty Yoder
OR.179-1622 4/13/2005
0.73 ac p.19-365



LET IT BE KNOWN, THIS MAP HAS BEEN PREPARED AS A REFERENCE GUIDE TO PROPERTY OWNERSHIP. WE BELIEVE THIS INFORMATION TO BE CORRECT AND CURRENT; HOWEVER IT IS NOT INTENDED FOR ANY LEGAL USE, WHETHER IT BE IN SALES, TRANSFERS, TRADES, LEASES OF ANY TYPE, ETC., AND DO NOT ACCEPT RESPONSIBILITY FOR ERRORS OF ANY NATURE OR OMISSIONS CONTAINED HEREIN.

new survey required for next transfer

Last Revision: 6/3/2008
T-14, R-11, Sec.3
Paint Twp.
Holmes County, Ohio

P-25